

# Open Charge Point Protocol 1.6

# Table of Contents

- 1. Scope ..... 6
- 2. Terminology and Conventions ..... 7
  - 2.1. Conventions ..... 7
  - 2.2. Definitions ..... 7
  - 2.3. Abbreviations ..... 8
  - 2.4. References ..... 9
- 3. Introduction ..... 10
  - 3.1. Document structure ..... 10
  - 3.2. Feature Profiles ..... 10
  - 3.3. General views of operation ..... 13
  - 3.4. Local Authorization & Offline Behavior ..... 15
  - 3.5. Transaction in relation to Energy Transfer Period ..... 18
  - 3.6. Transaction-related messages ..... 20
  - 3.7. Connector numbering ..... 21
  - 3.8. ID Tokens ..... 21
  - 3.9. Parent idTag ..... 22
  - 3.10. Reservations ..... 22
  - 3.11. Vendor-specific data transfer ..... 23
  - 3.12. Smart Charging ..... 23
  - 3.13. Time zones ..... 33
- 4. Operations Initiated by Charge Point ..... 34
  - 4.1. Authorize ..... 34
  - 4.2. Boot Notification ..... 34
  - 4.3. Data Transfer ..... 35
  - 4.4. Diagnostics Status Notification ..... 36
  - 4.5. Firmware Status Notification ..... 37
  - 4.6. Heartbeat ..... 37
  - 4.7. Meter Values ..... 38
  - 4.8. Start Transaction ..... 39
  - 4.9. Status Notification ..... 40
  - 4.10. Stop Transaction ..... 45
- 5. Operations Initiated by Central System ..... 48
  - 5.1. Cancel Reservation ..... 48
  - 5.2. Change Availability ..... 48
  - 5.3. Change Configuration ..... 49
  - 5.4. Clear Cache ..... 49

- 5.5. Clear Charging Profile ..... 50
- 5.6. Data Transfer ..... 50
- 5.7. Get Composite Schedule ..... 50
- 5.8. Get Configuration ..... 51
- 5.9. Get Diagnostics ..... 51
- 5.10. Get Local List Version ..... 52
- 5.11. Remote Start Transaction ..... 52
- 5.12. Remote Stop Transaction ..... 53
- 5.13. Reserve Now ..... 54
- 5.14. Reset ..... 55
- 5.15. Send Local List ..... 56
- 5.16. Set Charging Profile ..... 56
- 5.17. Trigger Message ..... 59
- 5.18. Unlock Connector ..... 60
- 5.19. Update Firmware ..... 60
- 6. Messages ..... 62
  - 6.1. Authorize.req ..... 62
  - 6.2. Authorize.conf ..... 62
  - 6.3. BootNotification.req ..... 62
  - 6.4. BootNotification.conf ..... 63
  - 6.5. CancelReservation.req ..... 64
  - 6.6. CancelReservation.conf ..... 64
  - 6.7. ChangeAvailability.req ..... 65
  - 6.8. ChangeAvailability.conf ..... 65
  - 6.9. ChangeConfiguration.req ..... 65
  - 6.10. ChangeConfiguration.conf ..... 66
  - 6.11. ClearCache.req ..... 66
  - 6.12. ClearCache.conf ..... 66
  - 6.13. ClearChargingProfile.req ..... 67
  - 6.14. ClearChargingProfile.conf ..... 67
  - 6.15. DataTransfer.req ..... 68
  - 6.16. DataTransfer.conf ..... 68
  - 6.17. DiagnosticsStatusNotification.req ..... 68
  - 6.18. DiagnosticsStatusNotification.conf ..... 69
  - 6.19. FirmwareStatusNotification.req ..... 69
  - 6.20. FirmwareStatusNotification.conf ..... 69
  - 6.21. GetCompositeSchedule.req ..... 69
  - 6.22. GetCompositeSchedule.conf ..... 70

6.23. GetConfiguration.req	71
6.24. GetConfiguration.conf	71
6.25. GetDiagnostics.req	71
6.26. GetDiagnostics.conf	72
6.27. GetLocalListVersion.req	72
6.28. GetLocalListVersion.conf	73
6.29. Heartbeat.req	73
6.30. Heartbeat.conf	73
6.31. MeterValues.req	73
6.32. MeterValues.conf	74
6.33. RemoteStartTransaction.req	74
6.34. RemoteStartTransaction.conf	74
6.35. RemoteStopTransaction.req	75
6.36. RemoteStopTransaction.conf	75
6.37. ReserveNow.req	75
6.38. ReserveNow.conf	76
6.39. Reset.req	76
6.40. Reset.conf	76
6.41. SendLocalList.req	77
6.42. SendLocalList.conf	78
6.43. SetChargingProfile.req	78
6.44. SetChargingProfile.conf	78
6.45. StartTransaction.req	79
6.46. StartTransaction.conf	80
6.47. StatusNotification.req	80
6.48. StatusNotification.conf	81
6.49. StopTransaction.req	81
6.50. StopTransaction.conf	82
6.51. TriggerMessage.req	82
6.52. TriggerMessage.conf	83
6.53. UnlockConnector.req	83
6.54. UnlockConnector.conf	83
6.55. UpdateFirmware.req	83
6.56. UpdateFirmware.conf	84
7. Types	85
7.1. AuthorizationData	85
7.2. AuthorizationStatus	85
7.3. AvailabilityStatus	86



7.4. AvailabilityType	86
7.5. CancelReservationStatus	86
7.6. ChargePointErrorCode	87
7.7. ChargePointStatus	87
7.8. ChargingProfile	89
7.9. ChargingProfileKindType	91
7.10. ChargingProfilePurposeType	91
7.11. ChargingProfileStatus	92
7.12. ChargingRateUnitType	92
7.13. ChargingSchedule	92
7.14. ChargingSchedulePeriod	93
7.15. CiString20Type	94
7.16. CiString25Type	94
7.17. CiString50Type	94
7.18. CiString255Type	95
7.19. CiString500Type	95
7.20. ClearCacheStatus	95
7.21. ClearChargingProfileStatus	95
7.22. ConfigurationStatus	96
7.23. DataTransferStatus	96
7.24. DiagnosticsStatus	96
7.25. FirmwareStatus	97
7.26. GetCompositeScheduleStatus	97
7.27. IdTagInfo	98
7.28. IdToken	98
7.29. KeyValue	98
7.30. Location	99
7.31. Measurand	99
7.32. MessageTrigger	100
7.33. MeterValue	101
7.34. Phase	101
7.35. ReadingContext	102
7.36. Reason	102
7.37. RecurrencyKindType	103
7.38. RegistrationStatus	103
7.39. RemoteStartStopStatus	103
7.40. ReservationStatus	104
7.41. ResetStatus	104

7.42. ResetType .....	104
7.43. SampledValue .....	105
7.44. TriggerMessageStatus .....	106
7.45. UnitOfMeasure .....	106
7.46. UnlockStatus .....	107
7.47. UpdateStatus .....	107
7.48. UpdateType .....	108
7.49. ValueFormat .....	108
8. Firmware and Diagnostics File Transfer .....	109
8.1. Download Firmware .....	109
8.2. Upload Diagnostics.....	109
9. Standard Configuration Key Names & Values .....	110
9.1. Core Profile .....	110
9.2. Local Auth List Management Profile .....	119
9.3. Reservation Profile .....	120
9.4. Smart Charging Profile .....	120
Appendix A: New in OCPP 1.6 .....	122
A.1. Updated/New Messages:.....	122

# Interface description between Charge Point and Central System

Document Version	1.6
Document Status	FINAL
Document Release Date	2015-10-08

Copyright © 2010 – 2015 Open Charge Alliance. All rights reserved.

This document is made available under the *\*Creative Commons Attribution-NoDerivatives 4.0 International Public License\** (<https://creativecommons.org/licenses/by-nd/4.0/legalcode>).

## Version History

Version	Date	Author	Description
1.6	2015-10-08	Robert de Leeuw <i>IHomer</i>  Reinier Lamers <i>The New Motion</i>  Brendan McMahon <i>ESB ecars</i>  Lambert Muhlenberg <i>Alfen</i>  Patrick Rademakers <i>IHomer</i>  Sergiu Tcaciuc <i>smartlab</i>  Klaas van Zuuren <i>ElaadNL</i>	1.6 Final Release.  For changes relative to 1.5, see appendix <a href="#">New in OCPP 1.6</a> .

Version	Date	Author	Description
1.5	2012-06-01	Franc Buve	<p>Specification ready for release. Includes:</p> <p>CR-01 Authentication/authorization lists</p> <p>CR-02 Interval meter readings</p> <p>CR-03 Charge point reservation</p> <p>CR-04 Generic data transfer</p> <p>CR-05 More detailed status notifications</p> <p>CR-06 Query configuration parameters</p> <p>CR-07 Timestamp in BootNotification mandatory</p> <p>CR-08 Response to <a href="#">StartTransaction.req</a> with status other than Accepted is not clearly defined</p> <p>CR-09 Increase size of firmwareVersion in BootNotification</p>
1.2	2011-02-21	Franc Buve	

<b>Version</b>	<b>Date</b>	<b>Author</b>	<b>Description</b>
1.0	2010-10-19	Franc Buve	Final version approved by e-laad.nl. Identical to version 0.12.

# 1. Scope

This document defines the protocol used between a **Charge Point** and **Central System**. If the protocol requires a certain action or response from one side or the other, then this will be stated in this document.

The specification does not define the communication technology. Any technology will do, as long as it supports TCP/IP connectivity.



# 2. Terminology and Conventions

## 2.1. Conventions

The key words “MUST”, “MUST NOT”, “REQUIRED”, “SHALL”, “SHALL NOT”, “SHOULD”, “SHOULD NOT”, “RECOMMENDED”, “MAY”, and “OPTIONAL” in this document are to be interpreted as described in [RFC2119]], subject to the following additional clarification clause:

The phrase “valid reasons in particular circumstances” relating to the usage of the terms “SHOULD”, “SHOULD NOT”, “RECOMMENDED”, and “NOT RECOMMENDED” is to be taken to mean technically valid reasons, such as the absence of necessary hardware to support a function from a charge point design: for the purposes of this specification it specifically excludes decisions made on commercial, or other non-technical grounds, such as cost of implementation, or likelihood of use.

All sections and appendixes, except “Scope” and “Terminology and Conventions”, are normative, unless they are explicitly indicated to be informative.

## 2.2. Definitions

This section contains the terminology that is used throughout this document.

<b>Central System</b>	Charge Point Management System: the central system that manages Charge Points and has the information for authorizing users for using its Charge Points.
<b>CiString</b>	Case Insensitive String. Only printable ASCII allowed.
<b>Charge Point</b>	The Charge Point is the physical system where an electric vehicle can be charged. A Charge Point has one or more connectors.
<b>Charging Profile</b>	Generic Charging Profile, used for different types of Profiles. Contains information about the Profile and holds the <a href="#">Charging Schedule</a> . In future versions of OCPP it might hold more than 1 <a href="#">Charging Schedule</a> .
<b>Charging Schedule</b>	Part of a Charging Profile. Defines a block of charging Power or Current limits. Can contain a start time and length.
<b>Charging Session</b>	Part of a transaction during which the EV is allowed to request energy
<b>Composite Charging Schedule</b>	The charging schedule as calculated by the Charge Point. It is the result of the calculation of all active schedules and possible local limits present in the Charge Point. Also IEC 15118 limits might be taken into account.

<b>Connector</b>	The term “Connector”, as used in this specification, refers to an independently operated and managed electrical outlet on a Charge Point. This usually corresponds to a single physical connector, but in some cases a single outlet may have multiple physical socket types and/or tethered cable/connector arrangements to facilitate different vehicle types (e.g. four-wheeled EVs and electric scooters).
<b>Control Pilot signal</b>	signal used by a Charge Point to inform EV of maximum Charging power or current limit, as defined by <a href="#">[IEC61851-1]</a> .
<b>Energy Transfer Period</b>	Time during which an EV chooses to take offered energy, or return it. Multiple Energy Transfer Periods are possible during a Transaction.
<b>Local Controller</b>	Optional device in a smart charging infrastructure. Located on the premises with a number of Charge Points connected to it. Sits between the Charge Points and Central System. Understands and speaks OCPP messages. Controls the Power or Current in other Charge Point by using OCPP smart charging messages. Can be a Charge Point itself.
<b>OCPP-J</b>	OCPP via JSON over WebSocket
<b>OCPP-S</b>	OCPP via SOAP
<b>Phase Rotation</b>	Defines the wiring order of the phases between the energy meter (or if absent, the grid connection), and the Charge Point connector.
<b>Transaction</b>	The part of the charging process that starts when all relevant preconditions (e.g. authorization, plug inserted) are met, and ends at the moment when the Charge Point irrevocably leaves this state.
<b>String</b>	Case Sensitive String. Only printable ASCII allowed. All strings in messages and enumerations are case sensitive, unless explicitly stated otherwise.

## 2.3. Abbreviations

<b>CSL</b>	Comma Separated List
<b>CPO</b>	Charge Point Operator
<b>DNS</b>	Domain Name System
<b>DST</b>	Daylight Saving Time
<b>EV</b>	Electrical Vehicle
<b>EVSE</b>	Electric Vehicle Supply Equipment <a href="#">[IEC61851-1]</a>
<b>FTP(S)</b>	File Transport Protocol (Secure)
<b>HTTP(S)</b>	HyperText Transport Protocol (Secure)
<b>ICCID</b>	Integrated Circuit Card Identifier

<b>IMSI</b>	International Mobile Subscription Identity
<b>JSON</b>	Java Simple Object Notation
<b>NAT</b>	Native Address Translation
<b>PDU</b>	Protocol Data Unit
<b>SC</b>	Smart Charging
<b>SOAP</b>	Simple Object Access Protocol
<b>URL</b>	Uniform Resource Locator
<b>RST</b>	3 phase power connection, Standard Reference Phasing
<b>RTS</b>	3 phase power connection, Reversed Reference Phasing
<b>SRT</b>	3 phase power connection, Reversed 240 degree rotation
<b>STR</b>	3 phase power connection, Standard 120 degree rotation
<b>TRS</b>	3 phase power connection, Standard 240 degree rotation
<b>TSR</b>	3 phase power connection, Reversed 120 degree rotation
<b>UTC</b>	Coordinated Universal Time

## 2.4. References

<b>[IEC61851-1]</b>	“IEC 61851-1 2010: Electric vehicle conductive charging system - Part 1: General requirements” <a href="https://webstore.iec.ch/publication/6029">https://webstore.iec.ch/publication/6029</a>
<b>[OCPP1.5]</b>	“OCPP 1.5: Open Charge Point Protocol 1.5” <a href="http://www.openchargealliance.org/downloads/">http://www.openchargealliance.org/downloads/</a>
<b>[OCPP_1.6CT]</b>	“OCPP 1.6 Compliance testing” <a href="http://www.openchargealliance.org/downloads/">http://www.openchargealliance.org/downloads/</a>
<b>[OCPP_IMP_J]</b>	“OCPP JSON Specification” <a href="http://www.openchargealliance.org/downloads/">http://www.openchargealliance.org/downloads/</a>
<b>[OCPP_IMP_S]</b>	“OCPP SOAP Specification” <a href="http://www.openchargealliance.org/downloads/">http://www.openchargealliance.org/downloads/</a>
<b>[RFC2119]</b>	“Key words for use in RFCs to Indicate Requirement Levels”. S. Bradner. March 1997. <a href="http://www.ietf.org/rfc/rfc2119.txt">http://www.ietf.org/rfc/rfc2119.txt</a>

# 3. Introduction

This is the specification for OCPP version 1.6.

OCPP is a standard open protocol for communication between Charge Points and a Central System and is designed to accommodate any type of charging technique.

OCPP 1.6 introduces new features to accommodate the market: Smart Charging, OCPP using JSON over Websockets, better diagnostics possibilities ([Reason](#)), more Charge Point [Statuses](#) and [TriggerMessage](#). OCPP 1.6 is based on OCPP 1.5, with some new features and a lot of textual improvements, clarifications and fixes for all known ambiguities. Due to improvements and new features, OCPP 1.6 is not backward compatible with OCPP 1.5.

For a full list of changes, see: [New in OCPP 1.6](#).

Some basic concepts are explained in the sections below in this introductory chapter. The chapters: [Operations Initiated by Charge Point](#) and [Operations Initiated by Central System](#) describe the operations supported by the protocol. The exact messages and their parameters are detailed in the chapter: [Messages](#) and data types are described in chapter: [Types](#). Defined configuration keys are described in the chapter: [Standard Configuration Key Names & Values](#).

## 3.1. Document structure

With the introduction of OCPP 1.6, there are two different flavours of OCPP; next to the SOAP based implementations, there is the possibility to use the much more compact JSON alternative. To avoid confusion in communication on the type of implementation we recommend using the distinct suffixes -J and -S to indicate JSON or SOAP. In generic terms this would be OCPP-J for JSON and OCPP-S for SOAP.

To support the different flavours, the OCPP standard is divided in multiple documents. The base document (the one you are reading now) contains the technical protocol specification. The technical protocol specification must be used with one of the transport protocol specifications. the [OCPP SOAP Specification](#) contains the implementation specification needed to make a OCPP-S implementation. For OCPP-J, the [OCPP JSON Specification](#) must be used.

For improved interoperability between the Central Systems and Charge Points, it is advised to meet the requirements stated in the [OCPP 1.6 Compliance testing](#) documentation.

## 3.2. Feature Profiles

This section is informative.

In OCPP 1.6 features and associated messages are grouped in *profiles*. Depending on the required functionality, implementers can choose to implement one or more of the following profiles.

Profile name	Description
<b>Core</b>	Basic Charge Point functionality comparable with OCPP 1.5 [OCPP1.5] without support for firmware updates, local authorization list management and reservations.
<b>Firmware Management</b>	Support for firmware update management and diagnostic log file download.
<b>Local Auth List Management</b>	Features to manage the local authorization list in Charge Points.
<b>Reservation</b>	Support for reservation of a Charge Point.
<b>Smart Charging</b>	Support for basic Smart Charging, for instance using control pilot.
<b>Remote Trigger</b>	Support for remote triggering of Charge Point initiated messages

These profiles can be used by a customer to determine if a OCPP 1.6 product has the required functionality for their business case. Compliance testing will test per profile if a product is compliant with the OCPP 1.6 specification.

Implementation of the Core profile is required. Other profiles are optional.

When the profiles **Core**, **Firmware Management**, **Local Auth List Management** and **Reservation** are implemented, all functions originating from OCPP 1.5 [OCPP1.5] are covered.

The grouping of all messages in their profiles can be found in the table below.

Message	Core	Firmware Management	Local Auth List Management	Reservation	Smart Charging	Remote Trigger
Authorize	X					
BootNotification	X					
ChangeAvailability	X					
ChangeConfiguration	X					
ClearCache	X					
DataTransfer	X					

Message	Core	Firmware Management	Local Auth List Management	Reservation	Smart Charging	Remote Trigger
GetConfiguration	X					
Heartbeat	X					
MeterValues	X					
RemoteStartTransaction	X					
RemoteStopTransaction	X					
Reset	X					
StartTransaction	X					
StatusNotification	X					
StopTransaction	X					
UnlockConnector	X					
GetDiagnostics		X				
DiagnosticsStatusNotification		X				
FirmwareStatusNotification		X				
UpdateFirmware		X				
GetLocalListVersion			X			
SendLocalList			X			
CancelReservation				X		

Message	Core	Firmware Management	Local Auth List Management	Reservation	Smart Charging	Remote Trigger
ReserveNow				X		
ClearChargingProfile					X	
GetCompositeSchedule					X	
SetChargingProfile					X	
TriggerMessage						X

The support for the specific charging profiles is reported by the `SupportedFeatureProfiles` configuration key.

### 3.3. General views of operation

This section is informative.

The following figures describe the general views of the operations between Charge Point and Central System for two cases:

1. a Charge Point requesting authentication of a card and sending charge transaction status,
2. Central System requesting a Charge Point to update its firmware.

The arrow labels in the following figures indicate the PDUs exchanged during the invocations of the operations. These PDUs are defined in detail in the [Messages](#) section.

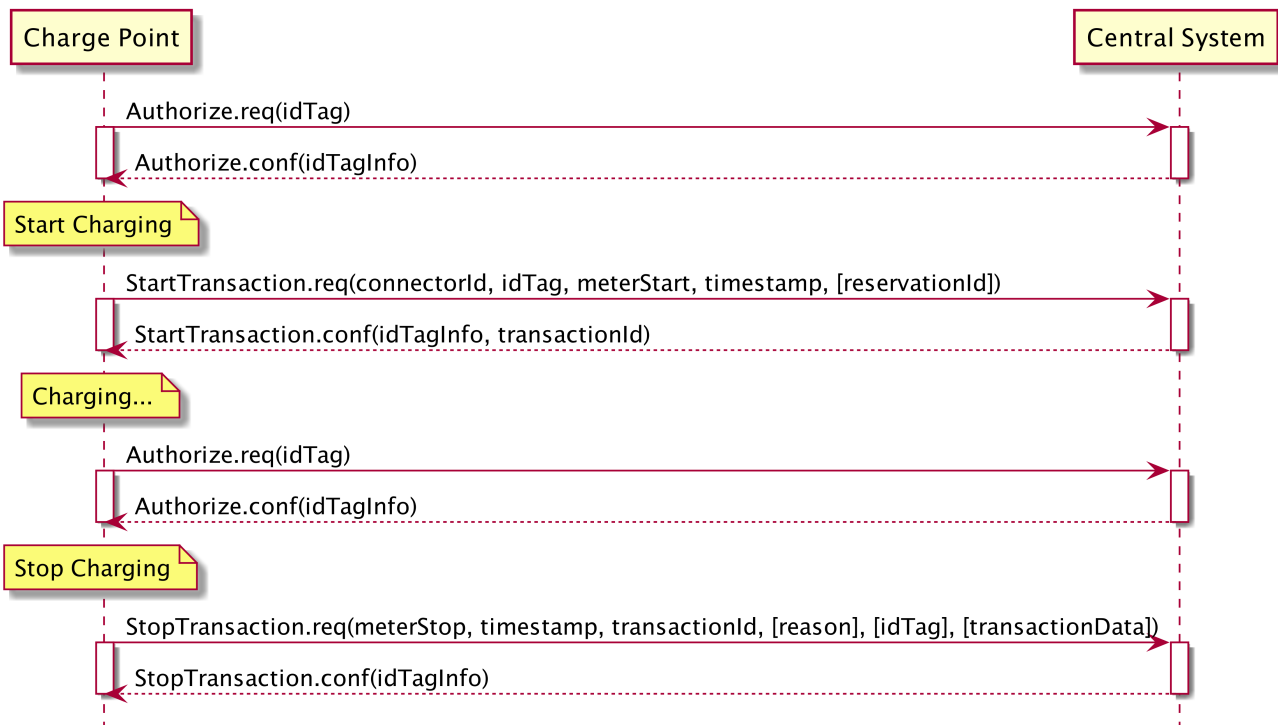


Figure 1. Sequence Diagram: Example of starting and stopping a transaction

When a Charge Point needs to charge an electric vehicle, it needs to authenticate the user first before the charging can be started. If the user is authorized the Charge Point informs the Central System that it has started with charging.

When a user wishes to unplug the electric vehicle from the Charge Point, the Charge Point needs to verify that the user is either the one that initiated the charging or that the user is in the same group and thus allowed to terminate the charging. Once authorized, the Charge Point informs the Central System that the charging has been stopped.

**NOTE**

A Charge Point MUST NOT send an [Authorize.req](#) before stopping a transaction if the presented idTag is the same as the idTag presented to start the transaction.



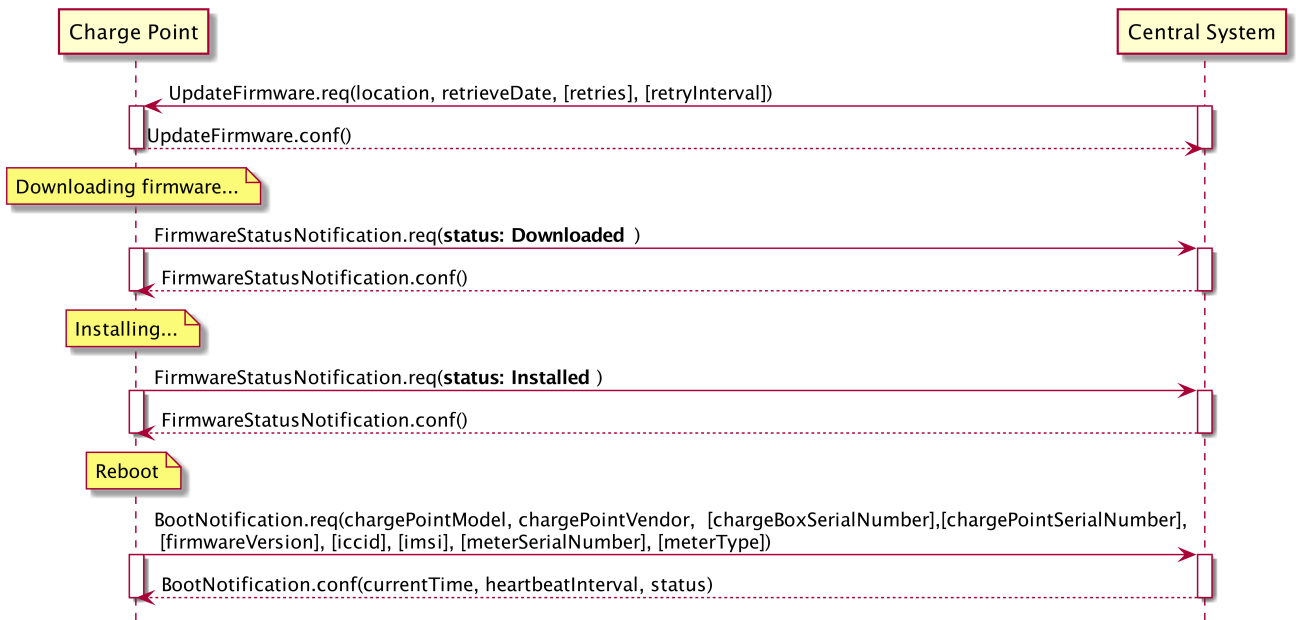


Figure 2. Sequence Diagram: Example of a firmware update

When a Charge Point needs to be updated with new firmware, the Central System informs the Charge Point of the time at which the Charge Point can start downloading the new firmware. The Charge Point SHALL notify the Central System after each step as it downloads and installs the new firmware.

### 3.4. Local Authorization & Offline Behavior

This section is normative.

In the event of unavailability of the communications or even of the Central System, the Charge Point is designed to operate stand-alone. In that situation, the Charge Point is said to be *offline*.

To improve the experience for users, a Charge Point MAY support local authorization of identifiers, using an [Authorization Cache](#) and/or a [Local Authorization List](#).

This allows (a) authorization of a user when *offline*, and (b) faster (apparent) authorization response time when communication between Charge Point and Central System is slow.

The `LocalAuthorizeOffline` configuration key controls whether a Charge Point will authorize a user when *offline* using the Authorization Cache and/or the Local Authorization List.

The `LocalPreAuthorize` configuration key controls whether a Charge Point will use the Authorization Cache and/or the Local Authorization List to start a transaction without waiting for an authorization response from the Central System.

A Charge Point MAY support the (automatic) authorization of any presented identifier when *offline*, to avoid refusal of charging to bona-fide users that cannot be explicitly authorized by Local Authorization List/Authorization Cache entries. This functionality is explained in more detail in [Unknown Offline Authorization](#).

### 3.4.1. Authorization Cache

A Charge Point MAY implement an *Authorization Cache* that autonomously maintains a record of previously presented identifiers that have been successfully authorized by the Central System. (*Successfully* meaning: a response received on a message containing an idTag)

If implemented, the Authorization Cache SHOULD conform to the following semantics:

- The Cache contains all the latest received identifiers (i.e. valid and NOT-valid).
- The Cache is updated using all received `IdTagInfo` (from `Authorize.conf`, `StartTransaction.conf` and `StopTransaction.conf`)
- When the validity of a Cache entry expires, it SHALL be changed to expired in the Cache.
- When an `IdTagInfo` is received for an identifier in the Cache, it SHALL be updated.
- If new identifier authorization data is received and the Authorization Cache is full, the Charge Point SHALL remove any NOT-valid entries, and then, if necessary, the oldest valid entries to make space for the new entry.
- Cache values SHOULD be stored in non-volatile memory, and SHOULD be persisted across reboots and power outages.
- When an identifier is presented that is stored in the cache as NOT-valid, and the Charge Point is *online*: an `Authorize.req` SHOULD be sent to the central System to check the current state of the identifier.

Operation of the Authorization Cache, when present, is reported (and controlled, where possible) by the `AuthorizationCacheEnabled` configuration key.

### 3.4.2. Local Authorization List

The Local Authorization List is a list of identifiers that can be synchronized with the Central System.

The list contains the authorization status of all (or a selection of) identifiers and the authorization status/expiration date.

Identifiers in the Local Authorization list can be marked as **valid**, **expired**, **(temporarily) blocked**, or **blacklisted**, corresponding to `IdTagInfo` *status* values `Accepted/ConcurrentTx`, `Expired`, `Blocked`, and `Invalid`, respectively.

These values may be used to provide more fine grained information to users (e.g. by display message) during local authorization.

The Local Authorization List SHOULD be maintained by the Charge Point in non-volatile memory, and SHOULD be persisted across reboots and power outages.

A Charge Point that supports Local Authorization List SHOULD implement the configuration key: `LocalAuthListMaxLength` This gives the Central System a way to know the the maximum possible

number of Local Authorization List elements in a Charge Point

The Charge Point indicates whether the Local Authorization List is supported by the presence or absence of the `LocalAuthListManagement` element in the value of the `SupportedFeatureProfiles` configuration key. Whether the Local Authorization List is enabled is reported and controlled by the `LocalAuthListEnabled` configuration key.

The Central System can synchronize this list by either (1) sending a complete list of identifiers to replace the Local Authorization List or (2) by sending a list of changes (add, update, delete) to apply to the Local Authorization List. The operations to support this are `Get Local List Version` and `Send Local List`.

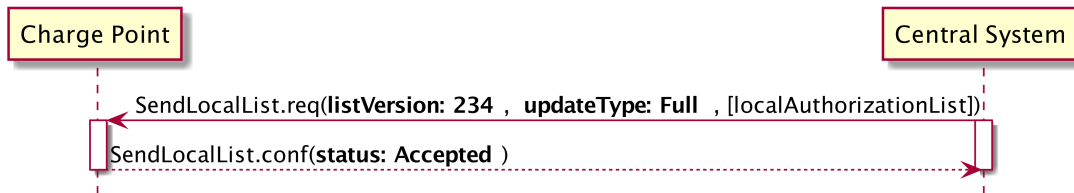


Figure 3. Sequence Diagram: Example of a full local authorization list update

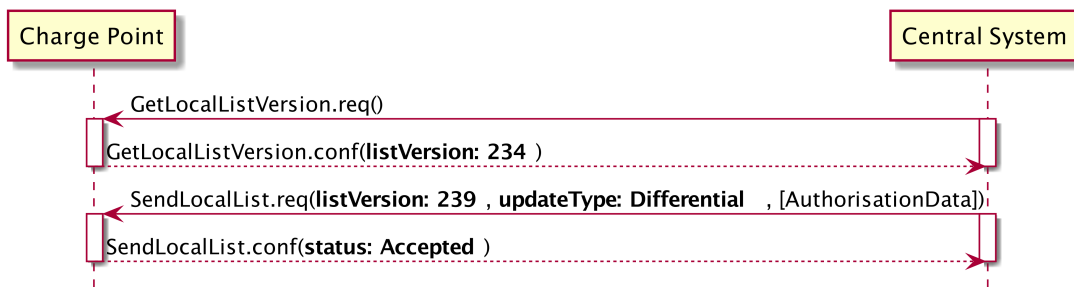


Figure 4. Sequence Diagram: Example of a differential local authorization list update

The Charge Point SHALL NOT modify the contents of the Authorization List by any other means than upon a the receipt of a `SendLocalList` PDU from the Central System.

**NOTE**

Conflicts between the local authorization list and the validity reported in, for instance, a `StartTransaction.conf` message might occur. When this happens the Charge Point SHALL inform the Central System by sending a `StatusNotification` with `ConnectorId` set to 0, and `ErrorCode` set to 'LocalListConflict'.

### 3.4.3. Relation between Authorization Cache and Local Authorization List

The Authorization Cache and Local Authorization List are distinct logical data structures. Identifiers known in the Local Authorization List SHALL NOT be added to the Authorization Cache.

Where both Authorization Cache and Local Authorization List are supported, a Charge Point SHALL treat Local Authorization List entries as having priority over Authorization Cache entries for the same identifiers.

### 3.4.4. Unknown Offline Authorization

When *offline*, a Charge Point MAY allow automatic authorization of any "unknown" identifiers that cannot be explicitly authorized by Local Authorization List or Authorization Cache entries. Identifiers that are present in a Local Authorization List that have a status other than "Accepted" (Invalid, Blocked, Expired) MUST be rejected. Identifiers that were valid but are apparently expired due to passage of time MUST also be rejected.

Operation of the Unknown Offline Authorization capability, when supported, is reported (and controlled, where possible) by the `AllowOfflineTxForUnknownId` configuration key.

When connection to the Central Server is restored, the Charge Point SHALL send a `Start Transaction` request for any transaction that was authorized *offline*, as required by [transaction-related message handling](#). When the authorization status in the `StartTransaction.conf` is not *Accepted*, and the transaction is still ongoing, the Charge Point SHOULD:

- when `StopTransactionOnInvalidId` is set to *true*: stop the transaction normally as stated in `Stop Transaction`. The `Reason` field in the `Stop Transaction` request should be set to *DeAuthorized*. If the Charge Point has the possibility to lock the Charging Cable, it SHOULD keep the Charging Cable locked until the owner presents his identifier.
- when `StopTransactionOnInvalidId` is set to *false*: only stop energy delivery to the vehicle.

#### NOTE

In the case of an invalid identifier, an operator MAY choose to charge the EV with a minimum amount of energy so the EV is able to drive away. This amount is controlled by the optional configuration key: `MaxEnergyOnInvalidId`.

## 3.5. Transaction in relation to Energy Transfer Period

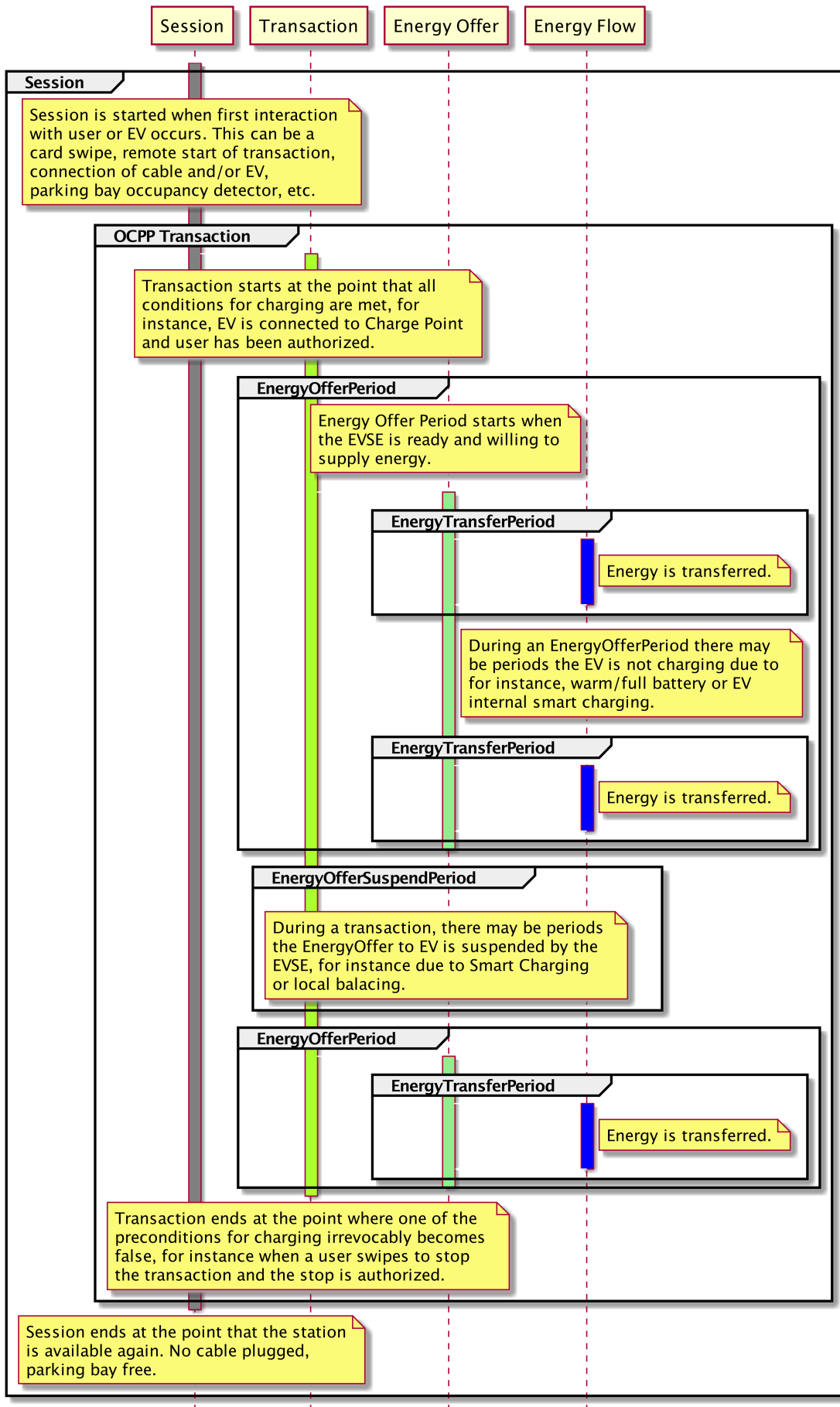
This section is informative.

The `Energy Transfer Period` is a period of time during which energy is transferred between the EV and the EVSE. There MAY be multiple Energy Transfer Periods during a `Transaction`.

Multiple Energy Transfer Periods can be separated by either:

- an EVSE-initiated suspense of transfer during which the EVSE does not offer energy transfer
- an EV-initiated suspense of transfer during which the EV remains electrically connected to the EVSE
- an EV-initiated suspense of transfer during which the EV is not electrically connected to the EVSE.

A Central System MAY deduce the start and end of an Energy Transfer Period from the `MeterValues` that are sent during the `Transaction`.



## 3.6. Transaction-related messages

This section is normative.

The Charge Point SHOULD deliver transaction-related messages to the Central System in chronological order as soon as possible. Transaction-related messages are [StartTransaction.req](#), [StopTransaction.req](#) and periodic or clock-aligned [MeterValues.req](#) messages.

When *offline*, the Charge Point MUST queue any transaction-related messages that it would have sent to the Central System if the Charge Point had been online.

In the event that a Charge Point has transaction-related messages queued to be sent to the Central System, new messages that are not transaction-related MAY be delivered immediately without waiting for the queue to be emptied. It is therefore allowed to send, for example, an Authorize request or a Notifications request before the transaction-related message queue has been emptied, so that customers are not kept waiting and urgent notifications are not delayed.

The delivery of new transaction-related messages SHALL wait until the queue has been emptied. This is to ensure that transaction-related messages are always delivered in chronological order.

When the Central System receives a transaction-related message that was queued on the Charge Point for some time, the Central System will not be aware that this is a historical message, other than by inference given that the various timestamps are significantly in the past. It SHOULD process such a message as any other.

### 3.6.1. Error responses to transaction-related messages

It is permissible for the Charge Point to skip a transaction-related message if and only if the Central System repeatedly reports a 'failure to process the message'. Such a stipulation is necessary, because otherwise the requirement to deliver every transaction-related message in chronological order would entail that the Charge Point cannot deliver any transaction-related messages to the Central System after a software bug causes the Central System not to acknowledge one of the Charge Point's transaction-related messages.

What kind of response, or failure to respond, constitutes a 'failure to process the message' is defined in the documents [OCPP JSON Specification](#) and [OCPP SOAP Specification](#).

The number of times and the interval with which the Charge Point should retry such failed transaction-related messages MAY be configured using the [TransactionMessageAttempts](#) and [TransactionMessageRetryInterval](#) configuration keys.

When the Charge Point encounters a first failure to deliver a certain transaction-related message, it SHOULD send this message again as long as it keeps resulting in a failure to process the message and it has not yet encountered as many failures to process the message for this message as specified in its

**TransactionMessageAttempts** configuration key. Before every retransmission, it SHOULD wait as many seconds as specified in its **TransactionMessageRetryInterval** key, multiplied by the number of preceding transmissions of this same message.

As an example, consider a Charge Point that has the value "3" for the **TransactionMessageAttempts** configuration key and the value "60" for the **TransactionMessageRetryInterval** configuration key. It sends a StopTransaction message and detects a failure to process the message in the Central System. The Charge Point SHALL wait for 60 seconds, and resend the message. In the case when there is a second failure, the Charge Point SHALL wait for 120 seconds, before resending the message. If this final attempt fails, the Charge Point SHOULD discard the message and continue with the next transaction-related message, if there is any.

## 3.7. Connector numbering

This section is normative.

To enable Central System to be able to address all the connectors of a Charge Point, ConnectorIds MUST always be numbered in the same way.

Connectors numbering (ConnectorIds) MUST be as follows:

- ID of the first connector MUST be 1
- Additional connectors MUST be sequentially numbered (no numbers may be skipped)
- ConnectorIds MUST never be higher than the total number of connectors of a Charge Point
- For operations initiated by the Central System, ConnectorId 0 is reserved for addressing the entire Charge Point.
- For operations initiated by the Charge Point (when reporting), ConnectorId 0 is reserved for the Charge Point main controller.

Example: A Charge Point with 3 connectors: All connectors MUST be numbered with the IDs: 1, 2 and 3. It is advisable to number the connectors of a Charge Point in a logical way: from left to right, top to bottom incrementing.

## 3.8. ID Tokens

This section is normative.

In most cases, **IdToken** data acquired via local token reader hardware is usually a (4 or 7 byte) UID value of a physical RFID card, typically represented as 8/14 hexadecimal digit characters.

However, **IdTokens** sent to Charge Points by Central Systems for remotely initiated charging sessions may commonly be (single use) virtual transaction authorization codes, or virtual RFID tokens that deliberately use a non-standard UID format to avoid possible conflict with real UID values.



Also, [IdToken](#) data used as [ParentIds](#) may often use a shared central account identifier for the [ParentId](#), instead of a UID of the first/master RFID card of an account.

Therefore, message data elements of the [IdToken](#) class (including [ParentId](#)) MAY contain any data, subject to the constraints of the data-type ([CiString20Type](#)), that is meaningful to a Central System (e.g. for the purpose of identifying the initiator of charging activity), and Charge Points MUST NOT make any presumptions as to the format or content of such data (e.g. by assuming that it is a UID-like value that must be hex characters only and/or an even number of digits).

**NOTE**

To promote interoperability, based on common practice to date in the case of [IdToken](#) data representing physical ISO 14443 compatible RFID card UIDs, it is RECOMMENDED that such UIDs be represented as hex representations of the UID bytes. According to ISO14443-3, byte 0 should come first in the hex string.

## 3.9. Parent idTag

This section is normative.

A Central System has the ability to treat a set of identity tokens as a “group”, thereby allowing any one token in the group to start a transaction and for the same token, or another token in the same group, to stop the transaction. This supports the common use-cases of families or businesses with multiple drivers using one or more shared electric vehicles on a single recharging contract account.

Tokens ([idTags](#)) are grouped for authorization purposes by specifying a common group identifier in the optional [ParentId](#) element in [IdTagInfo](#): two [idTags](#) are considered to be in the same group if their [ParentId](#) Tags match.

**NOTE**

Even though the [ParentId](#) has the same nominal data type ([IdToken](#)) as an [idTag](#), the value of this element may not be in the common format of [IdTokens](#) and/or may not represent an actual valid [IdToken](#) (e.g. it may be a common shared "account number"): therefore, the [ParentId](#) value SHOULD NOT be used for comparison against a presented [Token](#) value (unless it also occurs as an [idTag](#) value).

## 3.10. Reservations

This section is informative.

Reservation of a Charge Point is possible using the [Reserve Now](#) operation. This operation reserves the Charge Point until a certain expiry time for a specific [idTag](#). A parent [idTag](#) may be included in the reservation to support ‘group’ reservations. It is possible to reserve a specific connector on a Charge Point or to reserve any connector on a Charge Point. A reservation is released when the reserved [idTag](#) is used on the reserved connector (when specified) or on any connector (when unspecified) or when the expiry time is reached or when the reservation is explicitly canceled.



## 3.11. Vendor-specific data transfer

This section is informative.

The mechanism of vendor-specific data transfer allows for the exchange of data or messages not standardized in OCPP . As such, it offers a framework within OCPP for experimental functionality that may find its way into future OCPP versions. Experimenting can be done without creating new (possibly incompatible) OCPP dialects. Secondly, it offers a possibility to implement additional functionality agreed upon between specific Central System and Charge Point vendors.

The operation Vendor Specific Data MAY be initiated either by the Central System or by the Charge Point.

### IMPORTANT

Please use with extreme caution and only for optional functionality, since it will impact your compatibility with other systems that do not make use of this option. We recommend mentioning the usage explicitly in your documentation and/or communication. Please consider consulting the Open Charge Alliance before turning to this option to add functionality.

## 3.12. Smart Charging

This section is normative.

With Smart Charging a Central System gains the ability to influence the charging power or current of a specific EV, or the total allowed energy consumption on an entire Charge Point / a group of Charge Points, for instance, based on a grid connection, energy availability on the grid or the wiring of a building. Influencing the charge power or current is based on energy transfer limits at specific points in time. Those limits are combined in a Charging Profile.

### 3.12.1. Charging profile purposes

A charging profile consists of a charging schedule, which is basically a list of time intervals with their maximum charge power or current, and some values to specify the time period and recurrence of the schedule.

There are three different types of charging profiles, depending on their purpose:

- *ChargePointMaxProfile*

In load balancing scenarios, the Charge Point has one or more local charging profiles that limit the power or current to be shared by all connectors of the Charge Point. The Central System SHALL configure such a profile with `ChargingProfilePurpose` set to “*ChargePointMaxProfile*”. *ChargePointMaxProfile* can only be set at Charge Point ConnectorId 0.

- *TxDefaultProfile*

Default schedules for new transactions MAY be used to impose charging policies. An example could be a policy that prevents charging during the day. For schedules of this purpose, `ChargingProfilePurpose` SHALL be set to `TxDefaultProfile`.

*If `TxDefaultProfile` is set to `ConnectorId 0`, the `TxDefaultProfile` is applicable to all Connectors.*

*If `ConnectorId` is set  $>0$ , it only applies to that specific connector.*

*In the event a `TxDefaultProfile` for connector 0 is installed, and the Central System sends a new profile with `ConnectorId >0`, the `TxDefaultProfile` SHALL be replaced only for that specific connector.*

- `TxProfile`

If a transaction-specific profile with purpose `TxProfile` is present, it SHALL overrule the default charging profile with purpose `TxDefaultProfile` for the duration of the current transaction only. After the transaction is stopped, the profile SHOULD be deleted. If there is no transaction active on the connector specified in a charging profile of type `TxProfile`, then the Charge Point SHALL discard it and return an error status in `SetChargingProfile.conf`.

The final schedule constraints that apply to a transaction are determined by merging the profiles with purposes `ChargePointMaxProfile` with the profile `TxProfile` or the `TxDefaultProfile` in case no profile of purpose `TxProfile` is provided. `TxProfile` SHALL only be set at Charge Point `ConnectorId >0`.

### 3.12.2. Stacking charging profiles

It is allowed to stack charging profiles of the same charging profile purpose in order to describe complex calendars. For example, one can define a charging profile of purpose `TxDefaultProfile` with a duration and recurrence of one week that allows full power or current charging on weekdays from 23:00h to 06:00h and from 00:00h to 24:00h in weekends and reduced power or current charging at other times. On top of that, one can define other `TxDefaultProfiles` that define exception to this rule, for example for holidays.

Precedence of charging profiles is determined by the value of their `StackLevel` parameter. At any point in time the prevailing charging profile SHALL be the charging profile with the highest `stackLevel` among the profiles that are valid at that point in time, as determined by their `validFrom` and `validTo` parameters.

To avoid conflicts, the existence of multiple Charging Profiles with the same `stackLevel` and `Purposes` in a Charge Point is not allowed. Whenever a Charge Point receives a Charging Profile with a `stackLevel` and `Purpose` that already exists in the Charge Point, the Charge Point SHALL replace the existing profile.

**NOTE**

In the case an updated charging profile (with the same `stackLevel` and purpose) is sent with a `validFrom` `DateTime` in the future, the Charge Point SHALL replace the installed profile and SHALL revert to default behavior until `validFrom` is reached. It is RECOMMENDED to provide a start time in the past to prevent gaps.

### 3.12.3. Combining charging profile purposes

The Composite Schedule that will guide the charging level is a combination of the prevailing Charging Profiles of the different [chargingProfilePurposes](#).

This Composite Schedule is calculated by taking the minimum value for each time interval. Note that time intervals do not have to be of fixed length, nor do they have to be the same for every charging profile purpose. This means that a resulting Composite Schedule MAY contain intervals of different lengths.

At any point in time, the available power or current in the Composite Schedule, which is the result of merging the schedules of charging profiles [ChargePointMaxProfile](#) and [TxDefaultProfile](#) (or [TxProfile](#)), SHALL be less than or equal to lowest value of available power or current in any of the merged schedules.

In the case the Charge Point is equipped with more than one Connector, the limit value of [ChargePointMaxProfile](#) is the limit for all connectors combined. The combined energy flow of all connectors SHALL NOT be greater than the limit set by [ChargePointMaxProfile](#).

### 3.12.4. Smart Charging Use Cases

This section is informative.

There may be many different uses for smart charging. The following three typical kinds of smart charging will be used to illustrate the possible behavior of smart charging:

- [Load balancing](#)
- [Central smart charging](#)
- [Local smart charging](#)

There are more complex use cases possible in which two or more of the above use cases are combined into one more complex system.

#### Load Balancing

This section is informative.

The Load Balancing use case is about internal load balancing within the Charge Point, the Charge Point controls the charging schedule per connector. The Charge Point is configured with a fixed limit, for example the maximum current of the connection to the grid.

The optional charging schedule field [minChargingRate](#) may be used by the Charge Point to optimize the power distribution between the connectors. The parameter informs the Charge Point that charging below [minChargingRate](#) is inefficient, giving the possibility to select another balancing strategy.

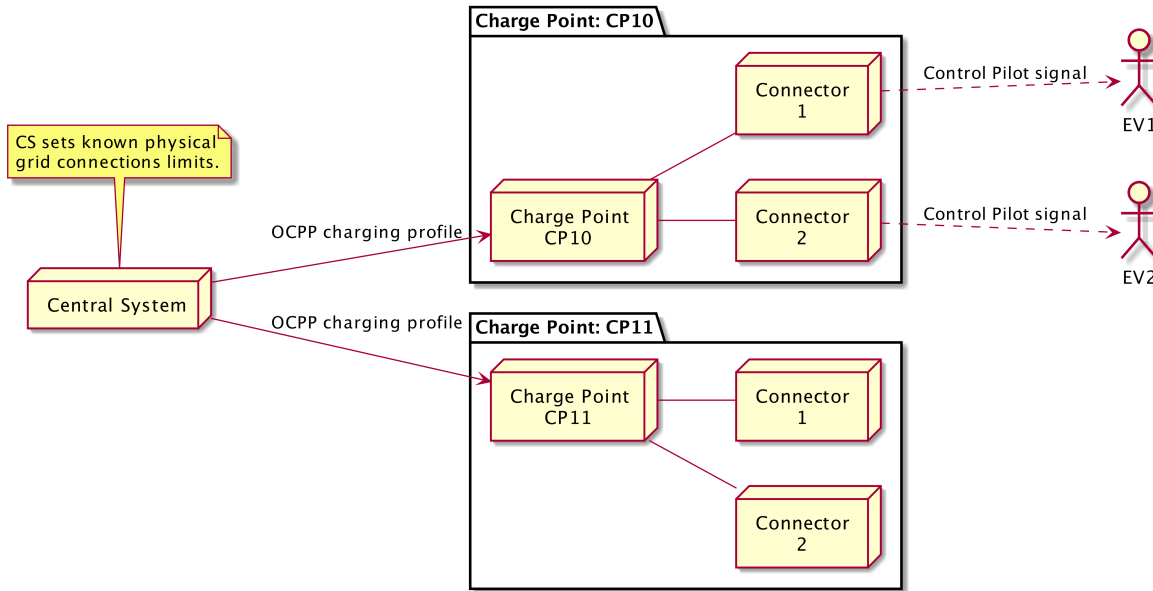


Figure 6. Load balancing Smart Charging topology

### Central Smart Charging

This section is informative.

With Central smart charging the constraints on the charging schedule, per transaction, are determined by the Central System. The Central System uses these schedules to stay within limits imposed by any external system. The Central System directly controls the limits on the connectors of the Charge Points.

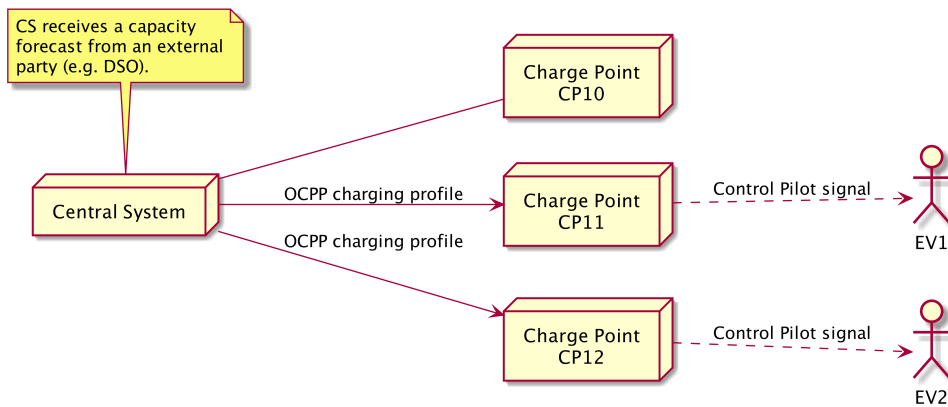


Figure 7. Central Smart Charging topology

Central smart charging assumes that charge limits are controlled by the Central System. The Central System receives a capacity forecast from the grid operator (DSO) or another source in one form or another and calculates charging schedules for some or all charging transactions, details of which are out of scope of this specification.

The Central System imposes charging limits on connectors. In response to a [StartTransaction.req](#) PDU The Central System may choose to set charging limits to the transaction using the TxProfile

Central Smart Charging can be done with a Control Pilot signal, albeit with some limitations, because

an EV cannot communicate its charging via the Control Pilot signal. In analogy to the [Local Smart Charging](#) use case, a connector can execute a charging schedule by the Control Pilot signal. This is illustrated in the Figure below:

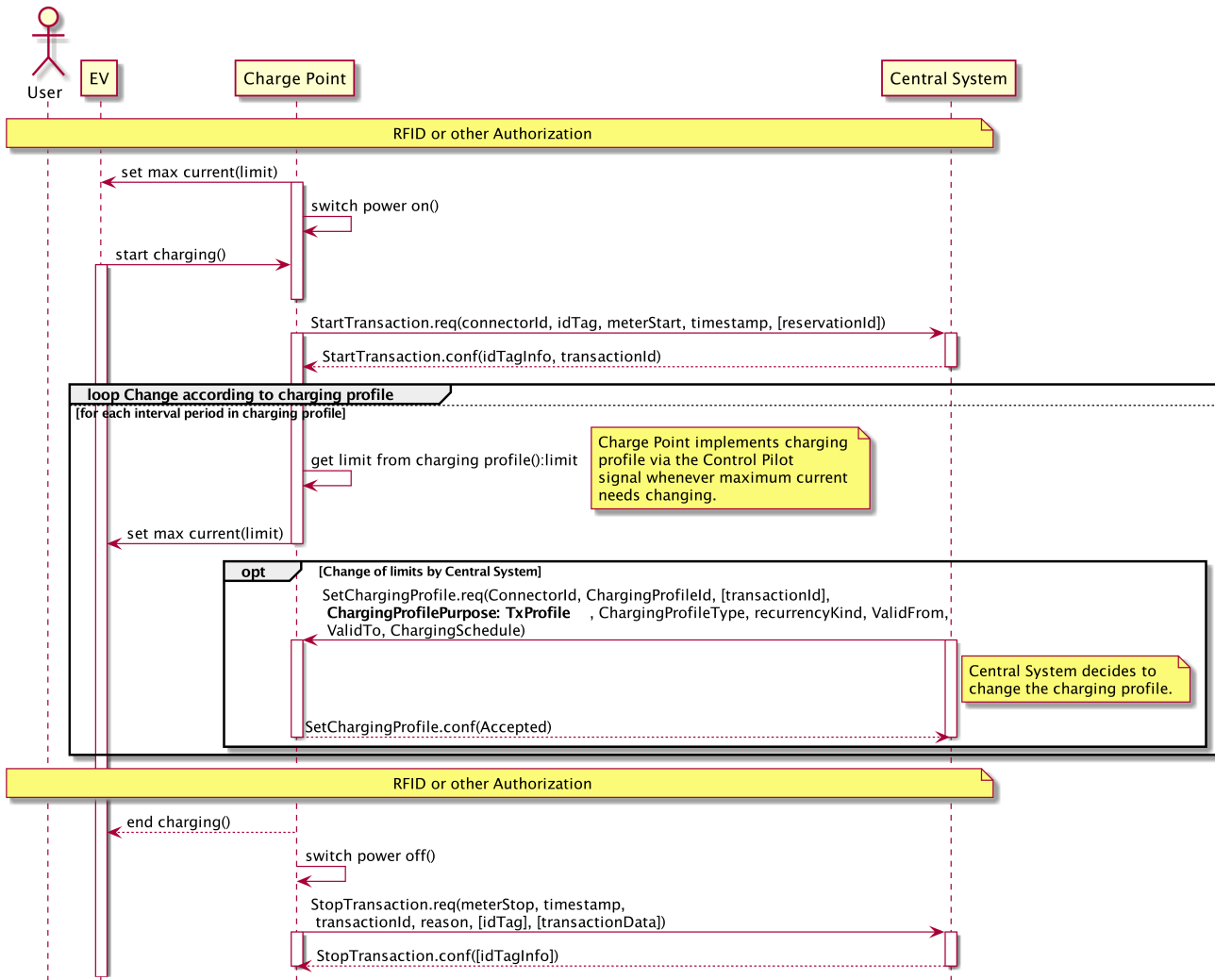


Figure 8. Sequence Diagram: Central Smart Charging

Explanation for the above figure:

- After authorization the connector will set a maximum current to use via the Control Pilot signal. This limit is based on a (default) charging profile that the connector had previously received from the Central System. The EV starts charging and a **StartTransaction.req** is sent to the Central System.
- While charging is in progress the connector will continuously adapt the maximum current or power according to the charging profile. Optionally, at any point in time the Central System may send a new charging profile for the connector that shall be used as a limit schedule for the EV.

## Local Smart Charging

The Local Smart Charging use case describes a use case in which smart charging enabled Charge Points have charging limits controlled locally by a Local Controller, not the Central System. The use case for local smart charging is about limiting the amount of power that can be used by a group of Charge

Points, to a certain maximum. A typical use would be a number of Charge Points in a parking garage where the rating of the connection to the grid is less than the sum the ratings of the Charge Points. Another application might be that the Local Controller receives information about the availability of power from a DSO or a local smart grid node.

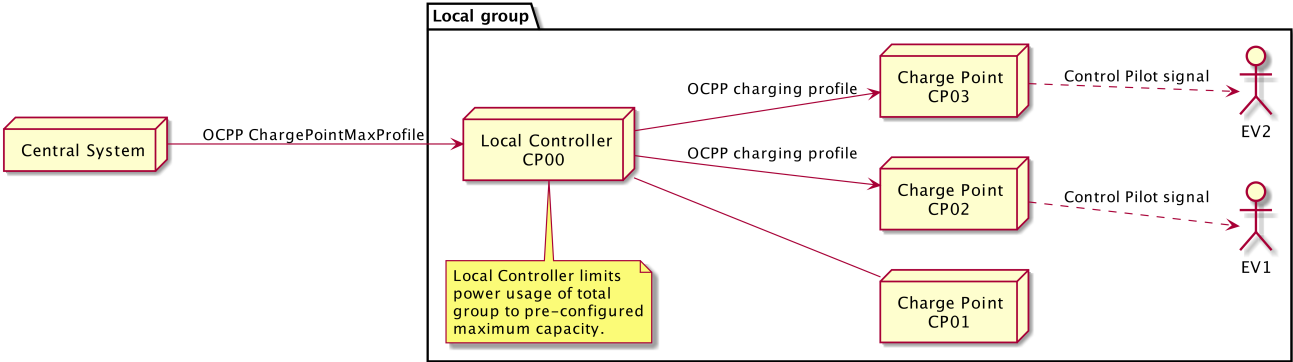


Figure 9. Local Smart Charging topology

Local smart charging assumes the existence of a Local Controller to control a group of Charge Points. The Local Controller is a logical component. It may be implemented either as a separate physical component or as part of a ‘master’ Charge Point controlling a number of other Charge Points. The Local Control implements the OCPP protocol and is a proxy for the group members' OCPP messages, and may or may not have any connectors of its own.

In the case of local smart charging the Local Controller imposes charging limits on a Charge Point. These limits may be changed dynamically during the charging process in order to keep the power consumption of the group of Charge Points within the group limits. The group limits may be pre-configured in the Local Controller or may have been configured by the Central System.

The optional charging schedule field `minChargingRate` may be used by the Local Controller to optimize the power distribution between the connectors. The parameter informs the Local Controller that charging below `minChargingRate` is inefficient, giving the possibility to select another balancing strategy.

The following diagram illustrates the sequence of messages to set charging limits on Charge Points in a Local Smart Charging group. These limits can either be pre-configured in the Local Controller in one way or another, or they can be set by the Central System. The Local Controller contains the logic to distribute this capacity among the connected connectors by adjusting their limits as needed.

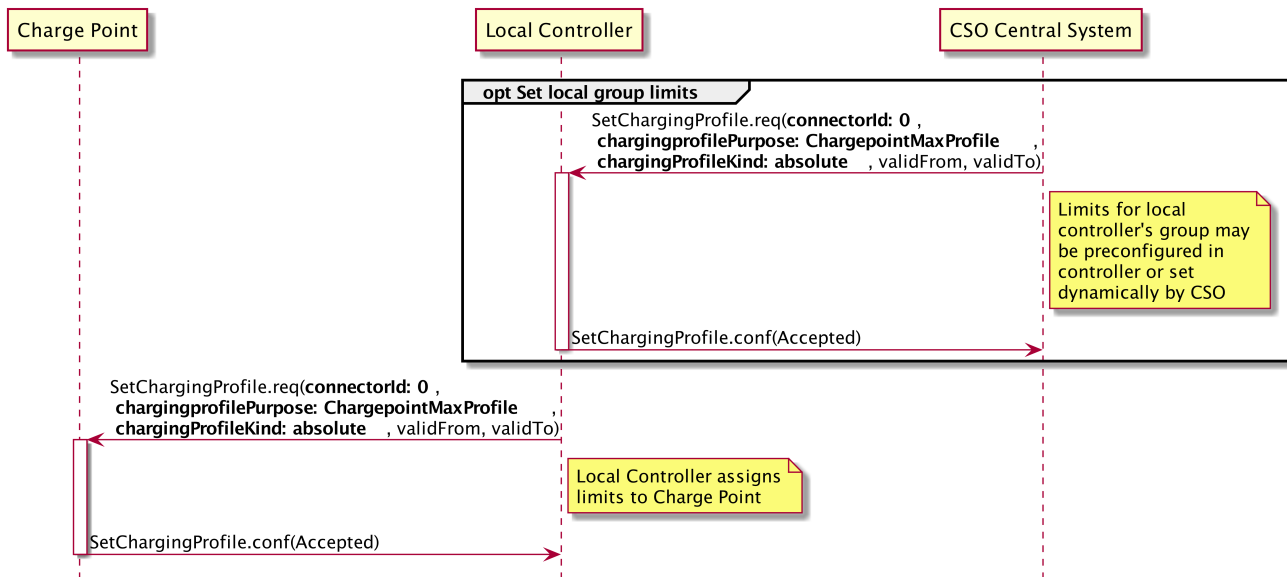


Figure 10. Presetting Local Group Limits

The next diagram describe the sequence of messages for a typical case of Local Smart Charging. For simplicity's sake, this case only involves one connector.

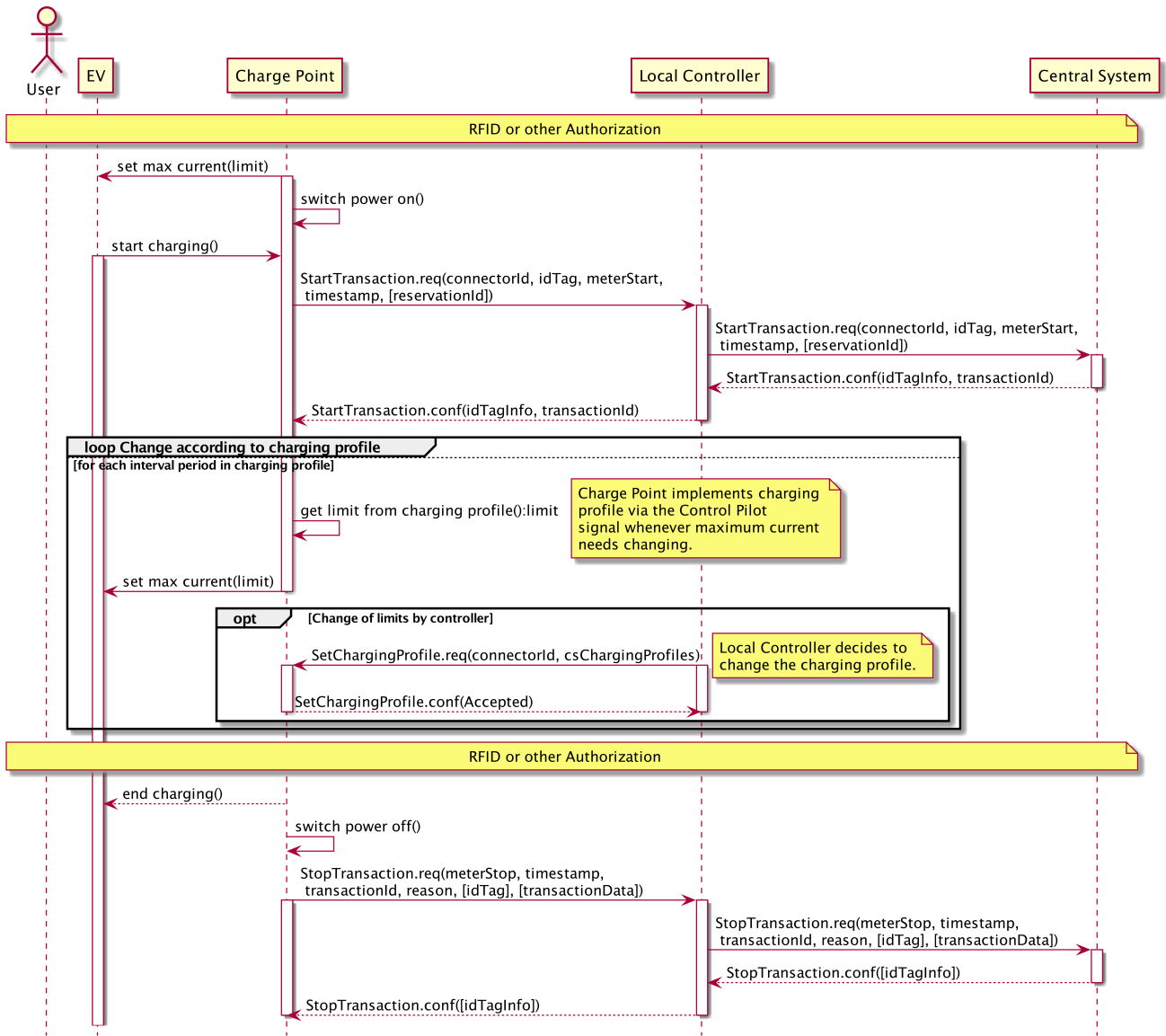


Figure 11. Sequence Diagram: Local Smart Charging

Explanation for the above figure:

- After authorization the connector will set a maximum current to use, via the Control Pilot signal. This limit is based on a (default) charging profile that the connector had previously received from the Local Controller. The EV starts charging and sends a [StartTransaction.req](#).
- The [StartTransaction.req](#) is sent to the Central System via the Local Controller, so that also the Local Controller knows a transaction has started. The Local Controller just passes on the messages between Charge Point and Central System, so that the Central System can address all the Local Smart Charging group members individually.
- While charging is in progress the connector will continuously adapt the maximum current according to the charging profile. Optionally, at any point in time the Local Controller may send a new charging profile to the connector that shall be used as a limit schedule for the EV.



### 3.12.5. Discovery of Charge Point Capabilities

This section is normative.

The smart charging options defined can be used in extensive ways. Because of the possible limitations and differences in capabilities between Charge Points, the Central System needs to be able to discover the Charge Point specific capabilities. This is ensured by the standardized configuration keys as defined in this chapter. A Smart Charging enabled Charge Point SHALL implement, and support reporting of, the following configuration keys through the [GetConfiguration.req](#) PDU

Smart charging configuration keys
<a href="#">ChargeProfileMaxStackLevel</a>
<a href="#">ChargingScheduleAllowedChargingRateUnit</a>
<a href="#">ChargingScheduleMaxPeriods</a>
<a href="#">MaxChargingProfilesInstalled</a>

A full list of all standardized configuration keys can be found in chapter [Standard Configuration Key Names & Values](#).

### 3.12.6. Offline behavior of smart charging

This section is normative.

If a Charge Point goes *offline* after having received a transaction-specific charging profile with purpose [TxProfile](#), then it SHALL continue to use this profile for the duration of the transaction.

If a Charge Point goes *offline* before a transaction is started or before a transaction-specific charging profile with purpose [TxProfile](#) was received, then it SHALL use the charging profiles that are available. Zero or more of the following charging profile purposes MAY have been previously received from the Central System:

*\*ChargePointMaxProfile*

*\*TxDefaultProfile*

See section [Combining Charging Profile Purposes](#) for a description on how to combine charging profiles with different purposes.

If a Charge Point goes *offline*, without having any charging profiles, then it SHALL execute a transaction as if no constraints apply.

### 3.12.7. Example data structure for smart charging

This section is informative

The following data structure describes a daily default profile that limits the power to 6 kW between

08:00h and 20:00h.

<b>ChargingProfile</b>			
chargingProfileId	<b>100</b>		
stackLevel	<b>0</b>		
chargingProfilePurpose	<b>TxDefaultProfile</b>		
chargingProfileKind	<b>Recurring</b>		
recurrencyKind	<b>Daily</b>		
chargingSchedule	(List of 1 <a href="#">ChargingSchedule</a> elements)		
	<b>ChargingSchedule</b>		
	duration	<b>86400 (= 24 hours)</b>	
	startSchedule	<b>2013-01-01T00:00Z</b>	
	chargingRateUnit	<b>W</b>	
	chargingSchedulePeriod	(List of 3 <a href="#">ChargingSchedulePeriod</a> elements)	
		<b>ChargingSchedulePeriod</b>	
		startPeriod	<b>0 (=00:00)</b>
		limit	<b>11000</b>
		numberPhases	3
		startPeriod	<b>28800 (=08:00)</b>
		limit	<b>6000</b>
		numberPhases	3
		startPeriod	<b>72000 (=20:00)</b>
		limit	<b>11000</b>
		numberPhases	3

**IMPORTANT**

The amount of phases used during charging is limited by the capabilities of: The Charge Point, EV and Cable between CP and EV. If any of these 3 is not capable of 3 phase charging, the EV will be charged using 1 phase only.

## IMPORTANT

Switching the number of used phases during a schedule or charging session should be done with care. Some EVs may not support this and changing the amount of phases may result in physical damage. With the configuration key: `ConnectorSwitch3to1PhaseSupported` The Charge Point can tell if it supports switching the amount of phases during a transaction.

## TIP

On days on which DST goes into or out of effect, a special profile might be needed (e.g. for relative profiles).

## 3.13. Time zones

This section is informative.

Ocpp does not prescribe the use of a specific time zone for time values. However, it is strongly recommended to use UTC for all time values to improve interoperability between Central Systems and Charge Points.

# 4. Operations Initiated by Charge Point

## 4.1. Authorize

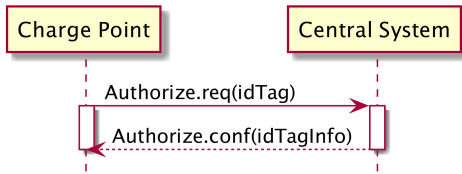


Figure 12. Sequence Diagram: Authorize

Before the owner of an electric vehicle can start or stop charging, the Charge Point has to authorize the operation. The Charge Point SHALL only supply energy after authorization. When stopping a Transaction, the Charge Point SHALL only send an `Authorize.req` when the identifier used for stopping the transaction is different from the identifier that started the transaction.

`Authorize.req` SHOULD only be used for the authorization of an identifier for charging.

A Charge Point MAY authorize identifier locally without involving the Central System, as described in [Local Authorization List](#). If an `idTag` presented by the user is not present in the Local Authorization List or Authorization Cache, then the Charge Point SHALL send an `Authorize.req` PDU to the Central System to request authorization. If the `idTag` is present in the Local Authorization List or Authorization Cache, then the Charge Point MAY send an `Authorize.req` PDU to the Central System.

Upon receipt of an `Authorize.req` PDU, the Central System SHALL respond with an `Authorize.conf` PDU. This response PDU SHALL indicate whether or not the `idTag` is accepted by the Central System. If the Central System accepts the `idTag` then the response PDU MAY include a `parentIdTag` and MUST include an authorization status value indicating acceptance or a reason for rejection.

If Charge Point has implemented an Authorization Cache, then upon receipt of an `Authorize.conf` PDU the Charge Point SHALL update the cache entry, if the `idTag` is not in the [Local Authorization List](#), with the `IdTagInfo` value from the response as described under [Authorization Cache](#).

## 4.2. Boot Notification

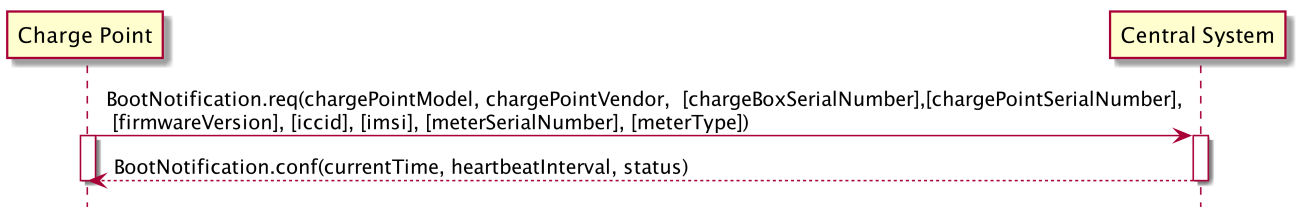


Figure 13. Sequence Diagram: Boot Notification

After start-up, a Charge Point SHALL send a request to the Central System with information about its configuration (e.g. version, vendor, etc.). The Central System SHALL respond to indicate whether it will

accept the Charge Point.

The Charge Point SHALL send a [BootNotification.req](#) PDU each time it boots or reboots. Between the physical power-on/reboot and the successful completion of a BootNotification, where Central System returns *Accepted* or *Pending*, the Charge Point SHALL NOT send any other request to the Central System. This includes cached messages that are still present in the Charge Point from before.

When the Central System responds with a [BootNotification.conf](#) with a status *Accepted*, the Charge Point will adjust the heartbeat interval in accordance with the interval from the response PDU and it is RECOMMENDED to synchronize its internal clock with the supplied Central System's current time. If the Central System returns something other than *Accepted*, the value of the interval field indicates the minimum wait time before sending a next BootNotification request. If that interval value is zero, the Charge Point chooses a waiting interval on its own, in a way that avoids flooding the Central System with requests. A Charge Point SHOULD NOT send a [BootNotification.req](#) earlier, unless requested to do so with a [TriggerMessage.req](#).

If the Central System returns the status *Rejected*, the Charge Point SHALL NOT send any OCPP message to the Central System until the aforementioned retry interval has expired. During this interval the Charge Point may no longer be reachable from the Central System. It MAY for instance close its communication channel or shut down its communication hardware. Also the Central System MAY close the communication channel, for instance to free up system resources. While *Rejected*, the Charge Point SHALL NOT respond to any Central System initiated message. the Central System SHOULD NOT initiate any.

The Central System MAY also return a *Pending* registration status to indicate that it wants to retrieve or set certain information on the Charge Point before the Central System will accept the Charge Point. If the Central System returns the *Pending* status, the communication channel SHOULD NOT be closed by either the Charge Point or the Central System. The Central System MAY send request messages to retrieve information from the Charge Point or change its configuration. The Charge Point SHOULD respond to these messages. The Charge Point SHALL NOT send request messages to the Central System unless it has been instructed by the Central System to do so with a [TriggerMessage.req](#) request.

While in *pending* state, the following Central System initiated messages are not allowed: [RemoteStartTransaction.req](#) and [RemoteStopTransaction.req](#)

**NOTE**

While not yet accepted by the Central System, the Charge Point may allow locally-authorized transactions if it is configured to do so, as described in [Local Authorization & Offline Behavior](#). Parties who want to implement this behavior must realize that it is uncertain if those transactions can ever be delivered to the Central System.

## 4.3. Data Transfer

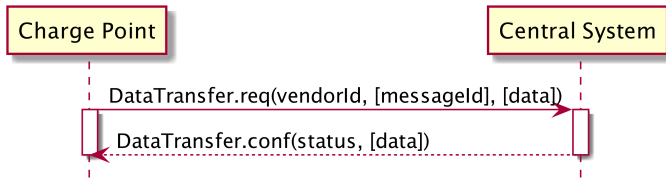


Figure 14. Sequence Diagram: Data Transfer

If a Charge Point needs to send information to the Central System for a function not supported by OCPP, it SHALL use the [DataTransfer.req](#) PDU.

The vendorId in the request SHOULD be known to the Central System and uniquely identify the vendor-specific implementation. The VendorId SHOULD be a value from the reversed DNS namespace, where the top tiers of the name, when reversed, should correspond to the publicly registered primary DNS name of the Vendor organisation.

Optionally, the messageId in the request PDU MAY be used to indicate a specific message or implementation.

The length of data in both the request and response PDU is undefined and should be agreed upon by all parties involved.

If the recipient of the request has no implementation for the specific vendorId it SHALL return a status 'UnknownVendor' and the data element SHALL not be present. In case of a messageId mismatch (if used) the recipient SHALL return status 'UnknownMessageId'. In all other cases the usage of status 'Accepted' or 'Rejected' and the data element is part of the vendor-specific agreement between the parties involved.

## 4.4. Diagnostics Status Notification

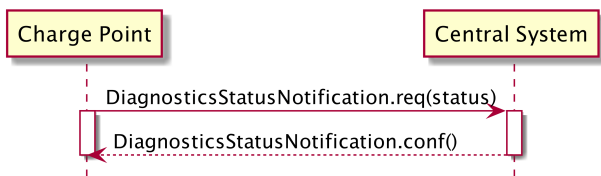


Figure 15. Sequence Diagram: Diagnostics Status Notification

Charge Point sends a notification to inform the Central System about the status of a diagnostics upload. The Charge Point SHALL send a [DiagnosticsStatusNotification.req](#) PDU to inform the Central System that the upload of diagnostics is busy or has finished successfully or failed. The Charge Point SHALL only send the status Idle after receipt of a TriggerMessage for a Diagnostics Status Notification, when it is not busy uploading diagnostics.

Upon receipt of a [DiagnosticsStatusNotification.req](#) PDU, the Central System SHALL respond with a [DiagnosticsStatusNotification.conf](#).

## 4.5. Firmware Status Notification

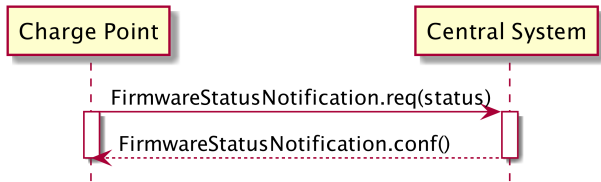


Figure 16. Sequence Diagram: Firmware Status Notification

A Charge Point sends notifications to inform the Central System about the progress of the firmware update. The Charge Point SHALL send a [FirmwareStatusNotification.req](#) PDU for informing the Central System about the progress of the downloading and installation of a firmware update. The Charge Point SHALL only send the status Idle after receipt of a TriggerMessage for a Firmware Status Notification, when it is not busy downloading/installing firmware.

Upon receipt of a [FirmwareStatusNotification.req](#) PDU, the Central System SHALL respond with a [FirmwareStatusNotification.conf](#).

## 4.6. Heartbeat

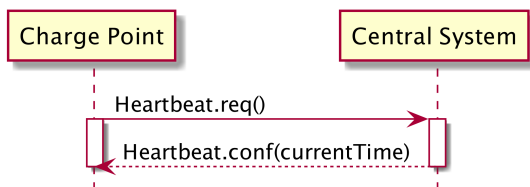


Figure 17. Sequence Diagram: Heartbeat

To let the Central System know that a Charge Point is still connected, a Charge Point sends a heartbeat after a configurable time interval.

The Charge Point SHALL send a [Heartbeat.req](#) PDU for ensuring that the Central System knows that a Charge Point is still alive.

Upon receipt of a [Heartbeat.req](#) PDU, the Central System SHALL respond with a [Heartbeat.conf](#). The response PDU SHALL contain the current time of the Central System, which is RECOMMENDED to be used by the Charge Point to synchronize its internal clock.

The Charge Point MAY skip sending a [Heartbeat.req](#) PDU when another PDU has been sent to the Central System within the configured heartbeat interval. This implies that a Central System SHOULD assume availability of a Charge Point whenever a PDU has been received, the same way as it would have, when it received a [Heartbeat.req](#) PDU.

### NOTE

With JSON over WebSocket, sending heartbeats is not mandatory. However, for time synchronization it is advised to at least send one heartbeat per 24 hour.

## 4.7. Meter Values

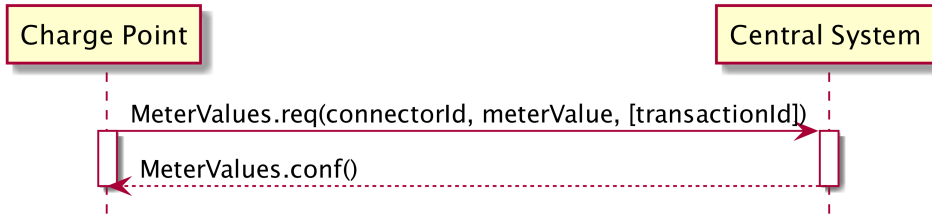


Figure 18. Sequence Diagram: Meter Values

A Charge Point MAY sample the energy meter or other sensor/transducer hardware to provide extra information about its meter values. It is up to the Charge Point to decide when it will send meter values. This can be configured using the [ChangeConfiguration.req](#) message to data acquisition intervals and specify data to be acquired & reported.

The Charge Point SHALL send a [MeterValues.req](#) PDU for offloading meter values. The request PDU SHALL contain for each sample:

1. The id of the Connector from which samples were taken. If the `connectorId` is 0, it is associated with the entire Charge Point. If the `connectorId` is 0 and the [Measurand](#) is energy related, the sample SHOULD be taken from the main energy meter.
2. The `transactionId` of the transaction to which these values are related, if applicable. If there is no transaction in progress or if the values are taken from the main meter, then transaction id may be omitted.
3. One or more **meterValue** elements, of type [MeterValue](#), each representing a set of one or more data values taken at a particular point in time.

Each [MeterValue](#) element contains a timestamp and a set of one or more individual [sampledValue](#) elements, all captured at the same point in time. Each [sampledValue](#) element contains a single value datum. The nature of each **sampledValue** is determined by the optional [measurand](#), [context](#), [location](#), [unit](#), [phase](#), and [format](#) fields.

The optional [measurand](#) field specifies the type of value being measured/reported.

The optional [context](#) field specifies the reason/event triggering the reading.

The optional [location](#) field specifies where the measurement is taken (e.g. Inlet, Outlet).

The optional [phase](#) field specifies to which phase or phases of the electric installation the value applies. The Charging Point SHALL report all phase number dependant values from the power meter (or grid connection when absent) point of view.

**NOTE** | The phase field is not applicable to all [Measurands](#).



**NOTE**

Two measurands (*Current.Offered* and *Power.Offered*) are available that are strictly speaking no measured values. They indicate the maximum amount of current/power that is being offered to the EV and are intended for use in smart charging applications.

For individual connector phase rotation information, the Central System MAY query the `ConnectorPhaseRotation` configuration key on the Charging Point via `GetConfiguration`. The Charge Point SHALL report the phase rotation in respect to the grid connection. Possible values per connector are: NotApplicable, Unknown, RST, RTS, SRT, STR, TRS and TSR. see section [Standard Configuration Key Names & Values](#) for more information.

The **EXPERIMENTAL** optional `format` field specifies whether the data is represented in the normal (default) form as a simple numeric value ("**Raw**"), or as "**SignedData**", an opaque digitally signed binary data block, represented as hex data. This experimental field may be deprecated and subsequently removed in later versions, when a more mature solution alternative is provided.

To retain backward compatibility, the default values of all of the optional fields on a `sampledValue` element are such that a **value** without any additional fields will be interpreted, as a register reading of active import energy in Wh (Watt-hour) units.

Upon receipt of a `MeterValues.req` PDU, the Central System SHALL respond with a `MeterValues.conf`.

It is likely that The Central System applies sanity checks to the data contained in a `MeterValues.req` it received. The outcome of such sanity checks SHOULD NOT ever cause the Central System to not respond with a `MeterValues.conf`. Failing to respond with a `MeterValues.conf` will only cause the Charge Point to try the same message again as specified in [Error responses to transaction-related messages](#).

## 4.8. Start Transaction

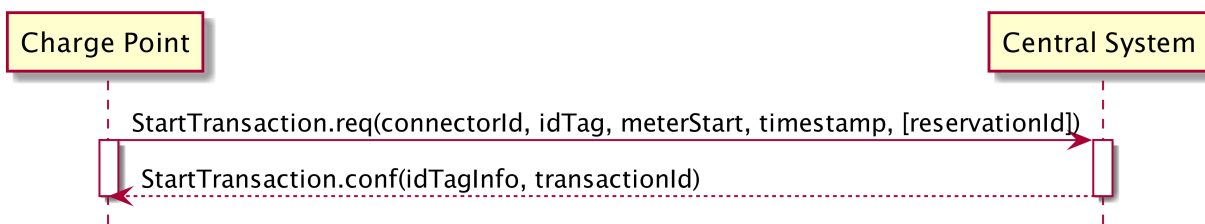


Figure 19. Sequence Diagram: Start Transaction

The Charge Point SHALL send a `StartTransaction.req` PDU to the Central System to inform about a transaction that has been started. If this transaction ends a reservation (see [Reserve Now](#) operation), then the `StartTransaction.req` MUST contain the `reservationId`.

Upon receipt of a `StartTransaction.req` PDU, the Central System SHOULD respond with a `StartTransaction.conf` PDU. This response PDU MUST include a transaction id and an authorization status value.

The Central System MUST verify validity of the identifier in the [StartTransaction.req](#) PDU, because the identifier might have been authorized locally by the Charge Point using outdated information. The identifier, for instance, may have been blocked since it was added to the Charge Point's [Authorization Cache](#).

If Charge Point has implemented an Authorization Cache, then upon receipt of a [StartTransaction.conf](#) PDU the Charge Point SHALL update the cache entry, if the idTag is not in the [Local Authorization List](#), with the [IdTagInfo](#) value from the response as described under [Authorization Cache](#).

It is likely that The Central System applies sanity checks to the data contained in a [StartTransaction.req](#) it received. The outcome of such sanity checks SHOULD NOT ever cause the Central System to not respond with a [StartTransaction.conf](#). Failing to respond with a [StartTransaction.conf](#) will only cause the Charge Point to try the same message again as specified in [Error responses to transaction-related messages](#).

## 4.9. Status Notification

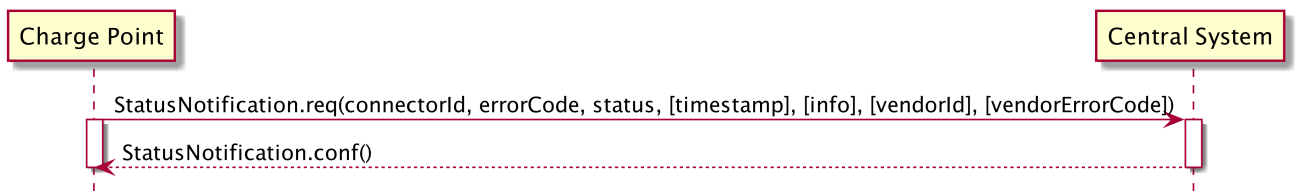


Figure 20. Sequence Diagram: Status Notification

A Charge Point sends a notification to the Central System to inform the Central System about a status change or an error within the Charge Point. The following table depicts changes from a previous status (left column) to a new status (upper row) upon which a Charge Point MAY send a [StatusNotification.req](#) PDU to the Central System.

<b>IMPORTANT</b>	The <i>Occupied</i> state as defined in previous OCPP versions is no longer relevant. The <i>Occupied</i> state is split into five new statuses: <i>Preparing</i> , <i>Charging</i> , <i>SuspendedEV</i> , <i>SuspendedEVSE</i> and <i>Finishing</i> .
<b>NOTE</b>	EVSE is used in Status Notification instead of Socket or Charge Point for future compatibility.

The following table describes which status transitions are possible:

		1 Avail able	2 Prepa ring	3 Charg ing	4 Suspe nded EV	5 Suspe nded EVSE	6 Finish ing		7 Reser ved	8 Unav ailabl e	9 Fault ed
<b>A</b>	Available		<b>A2</b>	<b>A3</b>	<b>A4</b>	<b>A5</b>			<b>A7</b>	<b>A8</b>	<b>A9</b>
<b>B</b>	Preparing	<b>B1</b>		<b>B3</b>	<b>B4</b>	<b>B5</b>					<b>B9</b>
<b>C</b>	Charging	<b>C1</b>			<b>C4</b>	<b>C5</b>	<b>C6</b>			<b>C8</b>	<b>C9</b>
<b>D</b>	SuspendedEV	<b>D1</b>		<b>D3</b>		<b>D5</b>	<b>D6</b>			<b>D8</b>	<b>D9</b>
<b>E</b>	SuspendedEV SE	<b>E1</b>		<b>E3</b>	<b>E4</b>		<b>E6</b>			<b>E8</b>	<b>E9</b>
<b>F</b>	Finishing	<b>F1</b>	<b>F2</b>							<b>F8</b>	<b>F9</b>
<b>G</b>	Reserved	<b>G1</b>	<b>G2</b>							<b>G8</b>	<b>G9</b>
<b>H</b>	Unavailable	<b>H1</b>	<b>H2</b>	<b>H3</b>	<b>H4</b>	<b>H5</b>					<b>H9</b>
<b>I</b>	Faulted	<b>I1</b>	<b>I2</b>	<b>I3</b>	<b>I4</b>	<b>I5</b>	<b>I6</b>		<b>I7</b>	<b>I8</b>	

**NOTE**

The table above is only applicable to ConnectorId > 0. For ConnectorId 0, only a limited set is applicable, namely: Available, Unavailable and Faulted.

The next table describes events that may lead to a status change:

	Not possible
<b>A2</b>	Usage is initiated (e.g. insert plug, bay occupancy detection, present idTag, push start button, receipt of a <a href="#">RemoteStartTransaction.req</a> )
<b>A3</b>	Can be possible in a Charge Point without an authorization means
<b>A4</b>	Similar to <b>A3</b> but the EV does not start charging
<b>A5</b>	Similar to <b>A3</b> but the EVSE does not allow charging
<b>A7</b>	A <a href="#">Reserve Now</a> message is received that reserves the connector
<b>A8</b>	A <a href="#">Change Availability</a> message is received that sets the connector to <i>Unavailable</i>
<b>A9</b>	A fault is detected that prevents further charging operations

<b>B1</b>	Intended usage is ended (e.g. plug removed, bay no longer occupied, second presentation of idTag, time out on expected user action)
<b>B3</b>	All prerequisites for charging are met and charging process starts
<b>B4</b>	All prerequisites for charging are met but EV does not start charging
<b>B5</b>	All prerequisites for charging are met but EVSE does not allow charging
<b>B9</b>	A fault is detected that prevents further charging operations
<b>C1</b>	Charging session ends while no user action is required (e.g. fixed cable was removed on EV side)
<b>C4</b>	Charging stops upon EV request (e.g. S2 is opened)
<b>C5</b>	Charging stops upon EVSE request (e.g. smart charging restriction, transaction is invalidated by the <a href="#">AuthorizationStatus</a> in a <a href="#">StartTransaction.conf</a> )
<b>C6</b>	Charging session is stopped by user or a <a href="#">Remote Stop Transaction</a> message and further user action is required (e.g. remove cable, leave parking bay)
<b>C8</b>	Charging session ends, no user action is required and the connector is scheduled to become <i>Unavailable</i>
<b>C9</b>	A fault is detected that prevents further charging operations
<b>D1</b>	Charging session ends while no user action is required
<b>D3</b>	Charging resumes upon request of the EV (e.g. S2 is closed)
<b>D5</b>	Charging is suspended by EVSE (e.g. due to a smart charging restriction)
<b>D6</b>	Charging session is stopped and further user action is required
<b>D8</b>	Charging session ends, no user action is required and the connector is scheduled to become <i>Unavailable</i>

<b>D9</b>	A fault is detected that prevents further charging operations
<b>E1</b>	Charging session ends while no user action is required
<b>E3</b>	Charging resumes because the EVSE restriction is lifted
<b>E4</b>	The EVSE restriction is lifted but the EV does not start charging
<b>E6</b>	Charging session is stopped and further user action is required
<b>E8</b>	Charging session ends, no user action is required and the connector is scheduled to become <i>Unavailable</i>
<b>E9</b>	A fault is detected that prevents further charging operations
<b>F1</b>	All user actions completed
<b>F2</b>	User restart charging session (e.g. reconnects cable, presents idTag again)
<b>F8</b>	All user actions completed and the connector is scheduled to become <i>Unavailable</i>
<b>F9</b>	A fault is detected that prevents further charging operations
<b>G1</b>	Reservation expires or a <a href="#">Cancel Reservation</a> message is received
<b>G2</b>	Reservation identity is presented
<b>G8</b>	Reservation expires or a <a href="#">Cancel Reservation</a> message is received and the connector is scheduled to become <i>Unavailable</i>
<b>G9</b>	A fault is detected that prevents further charging operations
<b>H1</b>	Connector is set <i>Available</i> by a <a href="#">Change Availability</a> message
<b>H2</b>	Connector is set <i>Available</i> after a user had interacted with the Charge Point

<b>H3</b>	Connector is set <i>Available</i> and no user action is required to start charging
<b>H4</b>	Similar to <b>H3</b> but the EV does not start charging
<b>H5</b>	Similar to <b>H3</b> but the EVSE does not allow charging
<b>H9</b>	A fault is detected that prevents further charging operations
<b>I1-I8</b>	Fault is resolved and status returns to the pre-fault state

**IMPORTANT**

A Charge Point Connector MAY have any of the 9 statuses as shown in the table above. For ConnectorId 0, only a limited set is applicable, namely: Available, Unavailable and Faulted. The status of ConnectorId 0 has no direct connection to the status of the individual Connectors (>0).

**IMPORTANT**

If charging is suspended both by the EV and the EVSE, status *SuspendedEVSE* SHALL have precedence over status *SuspendedEV*.

**IMPORTANT**

When a Charge Point or a Connector is set to status *Unavailable* by a [Change Availability](#) command, the 'Unavailable' status MUST be persistent across reboots. The Charge Point MAY use the *Unavailable* status internally for other purposes (e.g. while updating firmware or waiting for an initial *Accepted RegistrationStatus*).

As the status *Occupied* has been split into five new statuses (*Preparing*, *Charging*, *SuspendedEV*, *SuspendedEVSE* and *Finishing*), more [StatusNotification.req](#) PDUs will be sent from Charge Point to the Central System. For instance, when a transaction is started, the Connector status would successively change from *Preparing* to *Charging* with a short *SuspendedEV* and/or *SuspendedEVSE* inbetween, possibly within a couple of seconds.

To limit the number of transitions, the Charge Point MAY omit sending a [StatusNotification.req](#) if it was active for less time than defined in the optional configuration key *MinimumStatusDuration*. This way, a Charge Point MAY choose not to send certain [StatusNotification.req](#) PDUs.

**NOTE**

A Charge Point manufacturer MAY have implemented a minimal status duration for certain status transitions separate of the *MinimumStatusDuration* setting. The time set in *MinimumStatusDuration* will be added to this default delay. Setting *MinimumStatusDuration* to zero SHALL NOT override the default manufacturer's minimal status duration.

**IMPORTANT**

Setting a high *MinimumStatusDuration* time may result in the delayed sending of all StatusNotifications, since the Charge Point will only send the [StatusNotification.req](#) once the *MinimumStatusDuration* time is passed.

The Charge Point MAY send a [StatusNotification.req](#) PDU to inform the Central System of fault conditions. When the 'status' field is not *Faulted*, the condition should be considered a warning since charging operations are still possible.

**IMPORTANT**

[ChargePointErrorCode](#) *EVCommunicationError* SHALL only be used with status Preparing, SuspendedEV, SuspendedEVSE and Finishing and be treated as warning.

When a Charge Point is configured with [StopTransactionOnEVSideDisconnect](#) set to *false*, a transaction is running and the EV becomes disconnected on EV side, then a [StatusNotification.req](#) with the state: *SuspendedEV* SHOULD be send to the Central System, with the 'errorCode' field set to: 'NoError'. The Charge Point SHOULD add additional information in the 'info' field, Notifying the Central System with the reason of suspension: 'EV side disconnected'. The current transaction is not stopped.

When a Charge Point is configured with [StopTransactionOnEVSideDisconnect](#) set to *true*, a transaction is running and the EV becomes disconnected on EV side, then a [StatusNotification.req](#) with the state: 'Finishing' SHOULD be send to the Central System, with the 'errorCode' field set to: 'NoError'. The Charge Point SHOULD add additional information in the 'info' field, Notifying the Central System with the reason of stopping: 'EV side disconnected'. The current transaction is stopped.

When a Charge Point connects to a Central System after having been [offline](#), it updates the Central System about its status according to the following rules:

1. The Charge Point SHOULD send a [StatusNotification.req](#) PDU with its current status if the status changed while the Charge Point was *offline*.
2. The Charge Point MAY send a [StatusNotification.req](#) PDU to report an error that occurred while the Charge Point was *offline*.
3. The Charge Point SHOULD NOT send [StatusNotification.req](#) PDUs for historical status change events that happened while the Charge Point was offline and that do not inform the Central System of Charge Point errors or the Charge Point's current status.
4. The [StatusNotification.req](#) messages MUST be sent in the order in which the events that they describe occurred.

Upon receipt of a [StatusNotification.req](#) PDU, the Central System SHALL respond with a [StatusNotification.conf](#) PDU.

## 4.10. Stop Transaction

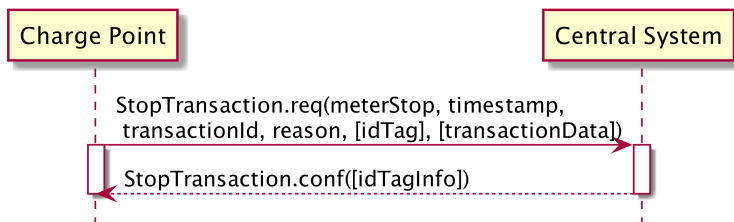


Figure 21. Sequence Diagram: Stop Transaction

When a transaction is stopped, the Charge Point SHALL send a [StopTransaction.req](#) PDU, notifying to the Central System that the transaction has stopped.

A [StopTransaction.req](#) PDU MAY contain an optional [TransactionData](#) element to provide more details about transaction usage. The optional [TransactionData](#) element is a container for any number of [MeterValues](#), using the same data structure as the **meterValue** elements of the [MeterValues.req](#) PDU (See section [MeterValues](#))

Upon receipt of a [StopTransaction.req](#) PDU, the Central System SHALL respond with a [StopTransaction.conf](#) PDU.

**NOTE**

The Central System cannot prevent a transaction from stopping. It MAY only inform the Charge Point it has received the [StopTransaction.req](#) and MAY send information about the idTag used to stop the transaction. This information SHOULD be used to update the [Authorization Cache](#), if implemented.

The idTag in the request PDU MAY be omitted when the Charge Point itself needs to stop the transaction. For instance, when the Charge Point is requested to reset.

If a transaction is ended in a normal way (e.g. EV-driver presented his identification to stop the transaction), the [Reason](#) element MAY be omitted and the [Reason](#) SHOULD be assumed 'Local'. If the transaction is not ended normally, the [Reason](#) SHOULD be set to a correct value. As part of the normal transaction termination, the Charge Point SHALL unlock the cable (if not permanently attached).

The Charge Point MAY unlock the cable (if not permanently attached) when the cable is disconnected at the EV. If supported, this functionality is reported and controlled by the configuration key [UnlockConnectorOnEVSideDisconnect](#).

The Charge Point MAY stop a running transaction when the cable is disconnected at the EV. If supported, this functionality is reported and controlled by the configuration key [StopTransactionOnEVSideDisconnect](#).

If [StopTransactionOnEVSideDisconnect](#) is set to *false*, the transaction SHALL not be stopped when the cable is disconnected from the EV. If the EV is reconnected, energy transfer is allowed again. In this case there is no mechanism to prevent other EVs from charging and disconnecting during that same ongoing transaction. With [UnlockConnectorOnEVSideDisconnect](#) set to *false*, the Connector SHALL remain locked at the Charge Point until the user presents the identifier.



By setting `StopTransactionOnEVSideDisconnect` to *true*, the transaction SHALL be stopped when the cable is disconnected from the EV. If the EV is reconnected, energy transfer is not allowed until the transaction is stopped and a new transaction is started. If `UnlockConnectorOnEVSideDisconnect` is set to *true*, also the Connector on the Charge Point will be unlocked.

**NOTE** If `StopTransactionOnEVSideDisconnect` is set to *false*, this SHALL have priority over `UnlockConnectorOnEVSideDisconnect`. In other words: cables always remain locked when the cable is disconnected at EV side when `StopTransactionOnEVSideDisconnect` is *false*.

**NOTE** Setting `StopTransactionOnEVSideDisconnect` to *true* will prevent sabotage acts to stop the energy flow by unplugging not locked cables on EV side.

It is likely that The Central System applies sanity checks to the data contained in a `StopTransaction.req` it received. The outcome of such sanity checks SHOULD NOT ever cause the Central System to not respond with a `StopTransaction.conf`. Failing to respond with a `StopTransaction.conf` will only cause the Charge Point to try the same message again as specified in [Error responses to transaction-related messages](#).

If Charge Point has implemented an Authorization Cache, then upon receipt of a `StopTransaction.conf` PDU the Charge Point SHALL update the cache entry, if the idTag is not in the [Local Authorization List](#), with the `IdTagInfo` value from the response as described under [Authorization Cache](#).

# 5. Operations Initiated by Central System

## 5.1. Cancel Reservation

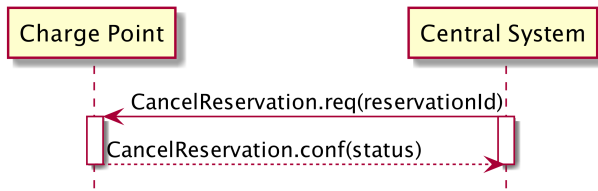


Figure 22. Sequence Diagram: Cancel Reservation

To cancel a reservation the Central System SHALL send an [CancelReservation.req](#) PDU to the Charge Point.

If the Charge Point has a reservation matching the reservationId in the request PDU, it SHALL return status 'Accepted'. Otherwise it SHALL return 'Rejected'.

## 5.2. Change Availability

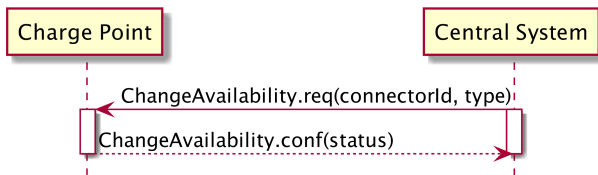


Figure 23. Sequence Diagram: Change Availability

Central System can request a Charge Point to change its availability. A Charge Point is considered available ("operative") when it is charging or ready for charging. A Charge Point is considered unavailable when it does not allow any charging. The Central System SHALL send a [ChangeAvailability.req](#) PDU for requesting a Charge Point to change its availability. The Central System can change the availability to available or unavailable.

Upon receipt of a [ChangeAvailability.req](#) PDU, the Charge Point SHALL respond with a [ChangeAvailability.conf](#) PDU. The response PDU SHALL indicate whether the Charge Point is able to change to the requested availability or not. When a transaction is in progress Charge Point SHALL respond with availability status 'Scheduled' to indicate that it is scheduled to occur after the transaction has finished.

In the event that Central System requests Charge Point to change to a status it is already in, Charge Point SHALL respond with availability status 'Accepted'.

When an availability change requested with a [ChangeAvailability.req](#) PDU has happened, the Charge Point SHALL inform Central System of its new availability status with a [StatusNotification.req](#) as described there.

- NOTE** In the case the [ChangeAvailability.req](#) contains ConnectorId = 0, the status change applies to the Charge Point and all Connectors.
- NOTE** Persistent states: for example: Connector set to Unavailable shall persist a reboot.

### 5.3. Change Configuration

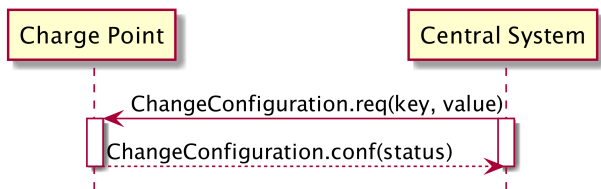


Figure 24. Sequence Diagram: Change Configuration

Central System can request a Charge Point to change configuration parameters. To achieve this, Central System SHALL send a [ChangeConfiguration.req](#). This request contains a key-value pair, where "key" is the name of the configuration setting to change and "value" contains the new setting for the configuration setting.

Upon receipt of a [ChangeConfiguration.req](#) Charge Point SHALL reply with a [ChangeConfiguration.conf](#) indicating whether it was able to executed the change. Content of "key" and "value" is not prescribed. If "key" does not correspond to a configuration setting supported by Charge Point, it SHALL reply with a status NotSupported. If the change was executed successfully, the Charge Point SHALL respond with a status Accepted. If the change was executed successfully, but a reboot is needed to apply it, the Charge Point SHALL respond with status RebootRequired. In case of failure to set the configuration, the Charge Point SHALL respond with status Rejected.

If a key value is defined as a CSL, it MAY be accompanied with a `[KeyName]MaxLength` key, indicating the max length of the CSL in items. If this key is not set, a safe value of 1 (one) item SHOULD be assumed.

### 5.4. Clear Cache

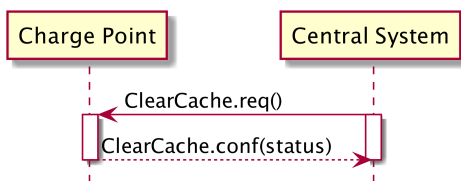


Figure 25. Sequence Diagram: Clear Cache

Central System can request a Charge Point to clear its [Authorization Cache](#). The Central System SHALL send a [ClearCache.req](#) PDU for clearing the Charge Point's Authorization Cache.

Upon receipt of a [ClearCache.req](#) PDU, the Charge Point SHALL respond with a [ClearCache.conf](#) PDU. The response PDU SHALL indicate whether the Charge Point was able to clear its Authorization Cache.

## 5.5. Clear Charging Profile

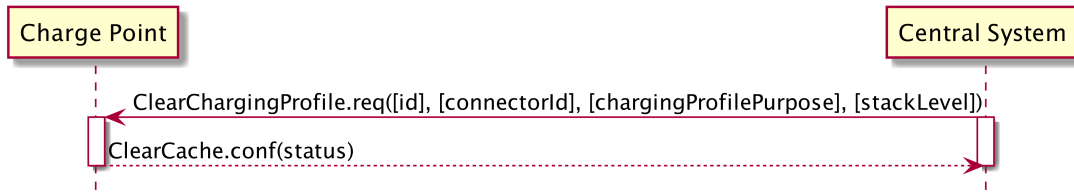


Figure 26. Sequence Diagram: Clear Charging Profile

If the Central System wishes to clear some or all of the charging profiles that were previously sent the Charge Point, it SHALL use the [ClearChargingProfile.req](#) PDU.

The Charge Point SHALL respond with a [ClearChargingProfile.conf](#) PDU specifying whether it was able to process the request.

## 5.6. Data Transfer

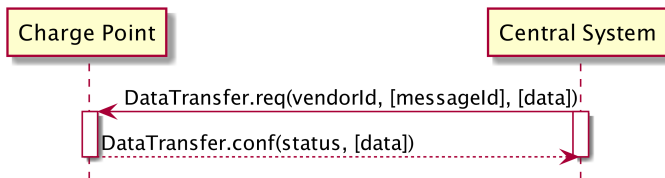


Figure 27. Sequence Diagram: Data Transfer

If the Central System needs to send information to a Charge Point for a function not supported by OCPP, it SHALL use the [DataTransfer.req](#) PDU.

Behaviour of this operation is identical to the Data Transfer operation initiated by the Charge Point. See [Data Transfer](#) for details.

## 5.7. Get Composite Schedule

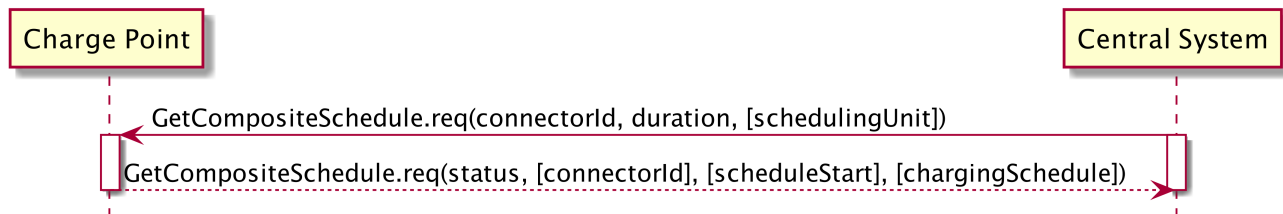


Figure 28. Sequence Diagram: Get Composite Schedule

The Central System MAY request the Charge Point to report the Composite Charging Schedule by sending a [GetCompositeSchedule.req](#) PDU. The reported schedule, in the [GetCompositeSchedule.conf](#) PDU, is the result of the calculation of all active schedules and possible local limits present in the Charge Point. Also IEC 15118 limits might be taken into account.

Upon receipt of a [GetCompositeSchedule.req](#), the Charge Point SHALL calculate the scheduled time intervals up to the Duration is met and send them to the central system.

If the ConnectorId in the request is set to '0', the Charge Point SHALL report the total expected energy flow of the Charge Point for the requested time period.

**NOTE**

Please note that the charging schedule sent by the charge point is only indicative for that point in time. this schedule might change over time due to external causes (for instance, local balancing based on grid connection capacity is active and one Connector becomes available).

If the Charge Point is not able to report the requested schedule, for instance if the connectorId is unknown, it SHALL respond with a status Rejected.

## 5.8. Get Configuration

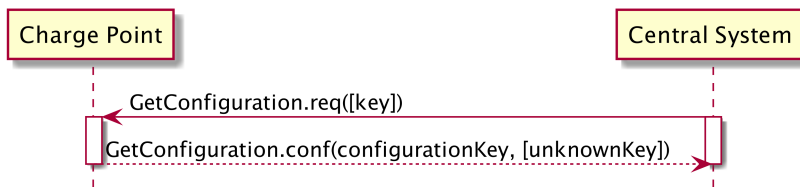


Figure 29. Sequence Diagram: Get Configuration

To retrieve the value of configuration settings, the Central System SHALL send a [GetConfiguration.req](#) PDU to the Charge Point.

If the list of keys in the request PDU is empty or missing (it is optional), the Charge Point SHALL return a list of all configuration settings in [GetConfiguration.conf](#). Otherwise Charge Point SHALL return a list of recognized keys and their corresponding values and read-only state. Unrecognized keys SHALL be placed in the response PDU as part of the optional unknown key list element of [GetConfiguration.conf](#).

The number of configuration keys requested in a single PDU MAY be limited by the Charge Point. This maximum can be retrieved by reading the configuration key [GetConfigurationMaxKeys](#).

## 5.9. Get Diagnostics

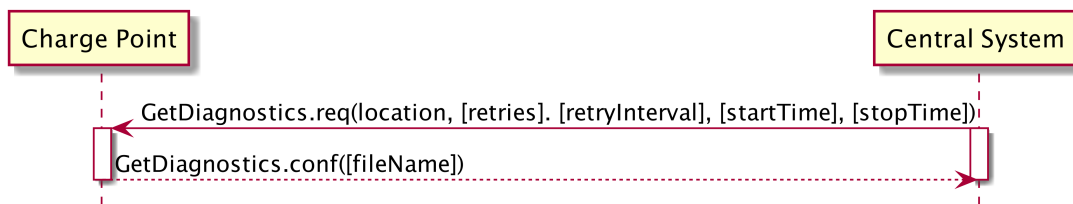


Figure 30. Sequence Diagram: Get Diagnostics

Central System can request a Charge Point for diagnostic information. The Central System SHALL send

a [GetDiagnostics.req](#) PDU for getting diagnostic information of a Charge Point with a location where the Charge Point MUST upload its diagnostic data to and optionally a begin and end time for the requested diagnostic information.

Upon receipt of a [GetDiagnostics.req](#) PDU, and if diagnostics information is available then Charge Point SHALL respond with a [GetDiagnostics.conf](#) PDU stating the name of the file containing the diagnostic information that will be uploaded. Charge Point SHALL upload a single file. Format of the diagnostics file is not prescribed. If no diagnostics file is available, then [GetDiagnostics.conf](#) SHALL NOT contain a file name.

## 5.10. Get Local List Version



Figure 31. Sequence Diagram: Get Local List Version

In order to support synchronisation of the [Local Authorization List](#), Central System can request a Charge Point for the version number of the Local Authorization List. The Central System SHALL send a [GetLocalListVersion.req](#) PDU to request this value.

Upon receipt of a [GetLocalListVersion.req](#) PDU Charge Point SHALL respond with a [GetLocalListVersion.conf](#) PDU containing the version number of its Local Authorization List. A version number of 0 (zero) SHALL be used to indicate that the local authorization list is empty, and a version number of -1 SHALL be used to indicate that the Charge Point does not support Local Authorization Lists.

## 5.11. Remote Start Transaction

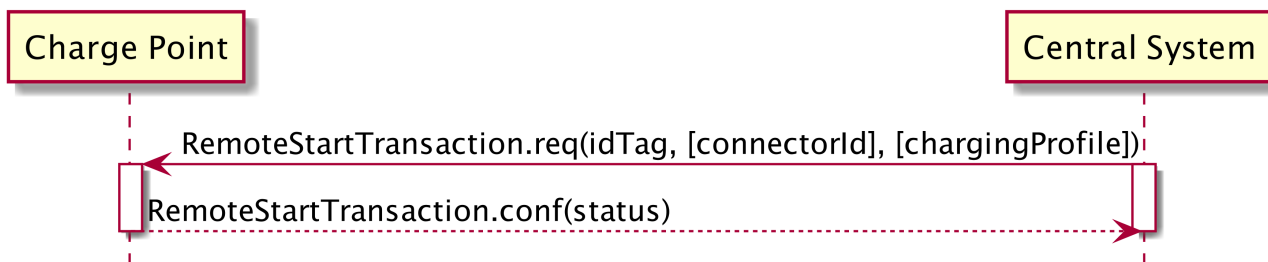


Figure 32. Sequence Diagram: Remote Start Transaction

Central System can request a Charge Point to start a transaction by sending a [RemoteStartTransaction.req](#). Upon receipt, the Charge Point SHALL reply with [RemoteStartTransaction.conf](#) and a status indicating whether it is able to start a transaction or not.

The effect of the `RemoteStartTransaction.req` message depends on the value of the

`AuthorizeRemoteTxRequests` configuration key in the Charge Point.

- If the value of `AuthorizeRemoteTxRequests` is `true`, the Charge Point SHALL behave as if in response to a local action at the Charge Point to start a transaction with the `idTag` given in the `RemoteStartTransaction.req` message. This means that the Charge Point will first try to authorize the `idTag`, using the [Local Authorization List](#), [Authorization Cache](#) and/or an `Authorize.req` request. A transaction will only be started after authorization was obtained.
- If the value of `AuthorizeRemoteTxRequests` is `false`, the Charge Point SHALL immediately try to start a transaction for the `idTag` given in the `RemoteStartTransaction.req` message. Note that after the transaction has been started, the Charge Point will send a `StartTransaction` request to the Central System, and the Central System will check the authorization status of the `idTag` when processing this `StartTransaction` request.

The following typical use cases are the reason for Remote Start Transaction:

- Enable a CPO operator to help an EV driver that has problems starting a transaction.
- Enable mobile apps to control charging transactions via the Central System.
- Enable the use of SMS to control charging transactions via the Central System.

The `RemoteStartTransaction.req` SHALL contain an identifier (`idTag`), which Charge Point SHALL use, if it is able to start a transaction, to send a `StartTransaction.req` to Central System. The transaction is started in the same way as described in `StartTransaction`. The `RemoteStartTransaction.req` MAY contain a connector id if the transaction is to be started on a specific connector. When no connector id is provided, the Charge Point is in control of the connector selection. A Charge Point MAY reject a `RemoteStartTransaction.req` without a connector id.

The Central System MAY include a `ChargingProfile` in the `RemoteStartTransaction` request. The purpose of this `ChargingProfile` SHALL be set to `TxProfile`. If accepted, the Charge Point SHALL use this `ChargingProfile` for the transaction.

**NOTE** If a Charge Point without support for Smart Charging receives a `RemoteStartTransaction.req` with a Charging Profile, this parameter SHOULD be ignored.

## 5.12. Remote Stop Transaction

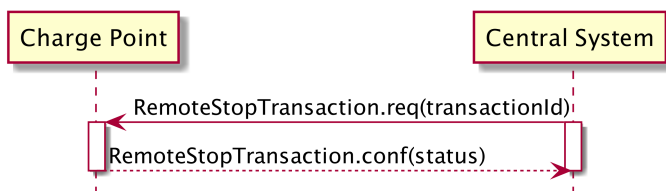


Figure 33. Sequence Diagram: Remote Stop Transaction

Central System can request a Charge Point to stop a transaction by sending a

[RemoteStopTransaction.req](#) to Charge Point with the identifier of the transaction. Charge Point SHALL reply with [RemoteStopTransaction.conf](#) to indicate whether it is indeed able to stop the transaction.

This remote request to stop a transaction is equal to a local action to stop a transaction. Therefore, the transaction SHALL be stopped, The Charge Point SHALL send a [StopTransaction.req](#) and, if applicable, unlock the connector.

The following two main use cases are the reason for Remote Stop Transaction:

- Enable a CPO operator to help an EV driver that has problems stopping a transaction.
- Enable mobile apps to control charging transactions via the Central System.

## 5.13. Reserve Now

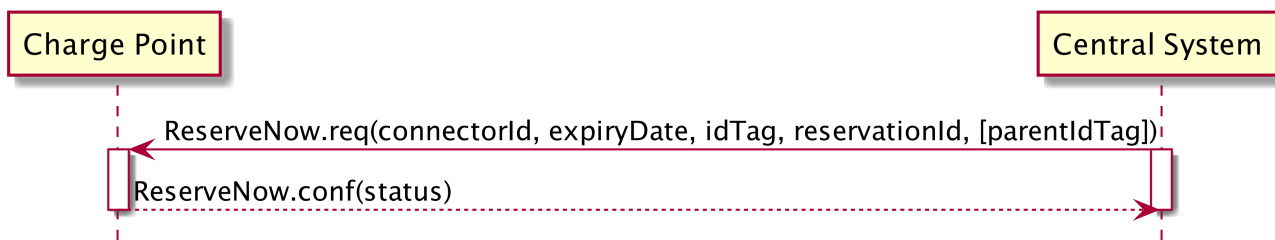


Figure 34. Sequence Diagram: Reserve Now

A Central System can issue a [ReserveNow.req](#) to a Charge Point to reserve a connector for use by a specific idTag.

To request a reservation the Central System SHALL send a [ReserveNow.req](#) PDU to a Charge Point. The Central System MAY specify a connector to be reserved. Upon receipt of a [ReserveNow.req](#) PDU, the Charge Point SHALL respond with a [ReserveNow.conf](#) PDU.

If the reservationId in the request matches a reservation in the Charge Point, then the Charge Point SHALL replace that reservation with the new reservation in the request.

If the reservationId does not match any reservation in the Charge Point, then the Charge Point SHALL return the status value 'Accepted' if it succeeds in reserving a connector. The Charge Point SHALL return 'Occupied' if the Charge Point or the specified connector are occupied. The Charge Point SHALL also return 'Occupied' when the Charge Point or connector has been reserved for the same or another idTag. The Charge Point SHALL return 'Faulted' if the Charge Point or the connector are in the Faulted state. The Charge Point SHALL return 'Unavailable' if the Charge Point or connector are in the Unavailable state. The Charge Point SHALL return 'Rejected' if it is configured not to accept reservations.

If the Charge Point accepts the reservation request, then it SHALL refuse charging for all incoming idTags on the reserved connector, except when the incoming idTag or the parent idTag match the idTag or parent idTag of the reservation.



When the configuration key: `ReserveConnectorZeroSupported` is set to `true` the Charge Point supports reservations on connector 0. If the `connectorId` in the reservation request is 0, then the Charge Point SHALL NOT reserve a specific connector, but SHALL make sure that at any time during the validity of the reservation, one connector remains available for the reserved `idTag`. If the configuration key: `ReserveConnectorZeroSupported` is not set or set to `false`, the Charge Point SHALL return 'Rejected'

If the parent `idTag` in the reservation has a value (it is optional), then in order to determine the parent `idTag` that is associated with an incoming `idTag`, the Charge Point MAY look it up in its Local Authorization List or Authorization Cache. If it is not found in the Local Authorization List or Authorization Cache, then the Charge Point SHALL send an `Authorize.req` for the incoming `idTag` to the Central System. The `Authorize.conf` response contains the parent-`id`.

A reservation SHALL be terminated on the Charge Point when either (1) a transaction is started for the reserved `idTag` or parent `idTag` and on the reserved connector or any connector when the reserved `connectorId` is 0, or (2) when the time specified in `expiryDate` is reached, or (3) when the Charge Point or connector are set to Faulted or Unavailable.

If a transaction for the reserved `idTag` is started, then Charge Point SHALL send the `reservationId` in the `StartTransaction.req` PDU (see `Start Transaction`) to notify the Central System that the reservation is terminated.

When a reservation expires, the Charge Point SHALL terminate the reservation and make the connector available. The Charge Point SHALL send a status notification to notify the Central System that the reserved connector is now available.

If Charge Point has implemented an Authorization Cache, then upon receipt of a `ReserveNow.conf` PDU the Charge Point SHALL update the cache entry, if the `idTag` is not in the `Local Authorization List`, with the `IdTagInfo` value from the response as described under `Authorization Cache`.

**NOTE**

It is RECOMMENDED to validate the Identifier with an `authorize.req` after reception of a `ReserveNow.req` and before the start of the transaction.

## 5.14. Reset

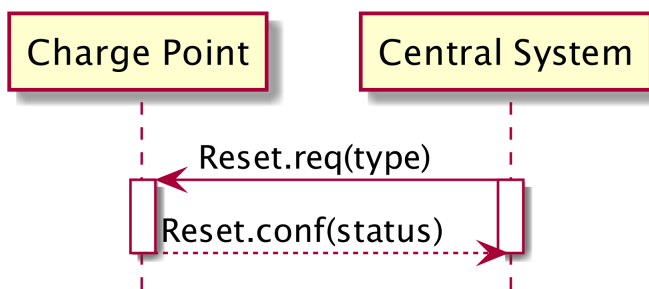


Figure 35. Sequence Diagram: Reset

The Central System SHALL send a `Reset.req` PDU for requesting a Charge Point to reset itself. The

Central System can request a hard or a soft reset. Upon receipt of a [Reset.req](#) PDU, the Charge Point SHALL respond with a [Reset.conf](#) PDU. The response PDU SHALL include whether the Charge Point is will attempt to reset itself.

At receipt of a soft reset, the Charge Point SHALL return to a state that behaves as just having been booted. If any transaction is in progress it SHALL be terminated normally, before the reset, as in [Stop Transaction](#).

At receipt of a hard reset the Charge Point SHALL attempt to terminate any transaction in progress normally as in [StopTransaction](#) and then perform a reboot.

**NOTE** Persistent states: for example: Connector set to Unavailable shall persist.

## 5.15. Send Local List

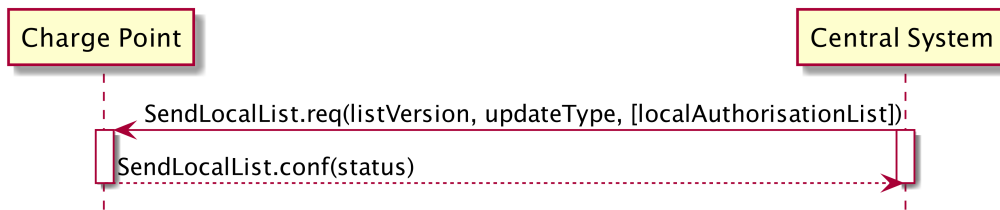


Figure 36. Sequence Diagram: Send Local List

Central System can send a [Local Authorization List](#) that a Charge Point can use for authorization of idTags. The list MAY be either a full list to replace the current list in the Charge Point or it MAY be a differential list with updates to be applied to the current list in the Charge Point.

The Central System SHALL send a [SendLocalList.req](#) PDU to send the list to a Charge Point. The [SendLocalList.req](#) PDU SHALL contain the type of update (full or differential) and the version number that the Charge Point MUST associate with the local authorization list after it has been updated.

Upon receipt of a [SendLocalList.req](#) PDU, the Charge Point SHALL respond with a [SendLocalList.conf](#) PDU. The response PDU SHALL indicate whether the Charge Point has accepted the update of the local authorization list. If the status is Failed or VersionMismatch and the updateType was Differential, then Central System SHOULD retry sending the full local authorization list with updateType Full.

## 5.16. Set Charging Profile

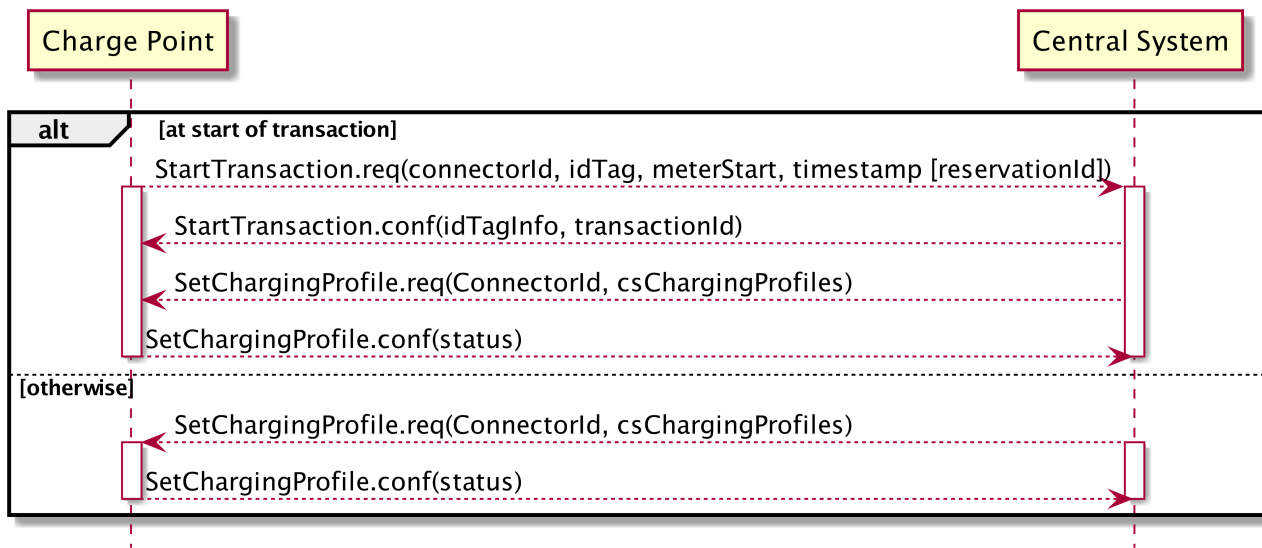


Figure 37. Sequence Diagram: Set Charging Profile

A Central System can send a [SetChargingProfile.req](#) to a Charge Point, to set a charging profile, in the following situations:

- At the start of a transaction to set the charging profile for the transaction;
- In a [RemoteStartTransaction](#) request sent to a Charge Point
- During a transaction to change the active profile for the transaction;
- Outside the context of a transaction as a separate message to set a charging profile to a local controller, Charge Point, or a default charging profile to a connector.

**IMPORTANT**

To prevent mismatch between transactions and a [TxProfile](#), The Central System SHALL include the transactionId in a [SetChargingProfile.req](#) if the profile applies to a specific transaction.

These situations are described below.

### 5.16.1. Setting a charging profile at start of transaction

If the Central System receives a [StartTransaction.req](#) the Central System SHALL respond with a [StartTransaction.conf](#). If there is a need for a charging profile, The Central System MAY choose to send a [SetChargingProfile.req](#) to the Charge Point.

It is RECOMMENDED to check the timestamp in the [StartTransaction.req](#) PDU prior to sending a charging profile to check if the transaction is likely to be still ongoing. The [StartTransaction.req](#) might have been cached during an *offline* period.

### 5.16.2. Setting a charge profile in a RemoteStartTransaction request

The Central System MAY include a charging profile in a [RemoteStartTransaction](#) request.

If the Central System includes a [ChargingProfile](#), the `ChargingProfilePurpose` MUST be set to `TxProfile`.

**NOTE** The Charge Point SHOULD add the `TransactionId` to the received profile once the transaction is reported to the central system.

### 5.16.3. Setting a charging profile during a transaction.

The Central System MAY send a charging profile to a Charge Point to update the charging profile for that transaction. The Central System SHALL use the `SetChargingProfile.req` PDU for that purpose. If a charging profile with the same `chargingProfileId`, or the same combination of `stackLevel` / `ChargingProfilePurpose`, exists on the Charge Point, the new charging profile SHALL replace the existing charging profile, otherwise it SHALL be added. The Charge Point SHALL then re-evaluate its collection of charge profiles to determine which charging profile will become active. In order to ensure that the updated charging profile applies only to the current transaction, the `chargingProfilePurpose` of the `ChargingProfile` MUST be set to `TxProfile`. (See section: [Charging Profile Purposes](#))

### 5.16.4. Setting a charging profile outside of a transaction

The Central System MAY send charging profiles to a Charge Point that are to be used as default charging profiles. The Central System SHALL use the `SetChargingProfile.req` PDU for that purpose. Such charging profiles MAY be sent at any time. If a charging profile with the same `chargingProfileId`, or the same combination of `stackLevel` / `ChargingProfilePurpose`, exists on the Charge Point, the new charging profile SHALL replace the existing charging profile, otherwise it SHALL be added. The Charge Point SHALL then re-evaluate its collection of charge profiles to determine which charging profile will become active.

**NOTE** It is not possible to set a `ChargingProfile` with purpose set to `TxProfile` without presence of an active transaction, or in advance of a transaction.

**NOTE** When a `ChargingProfile` is refreshed during execution, it is advised to put the `startSchedule` of the new `ChargingProfile` in the past, so there is no period of default charging behaviour inbetween the `ChargingProfiles`. The Charge Point SHALL continue to execute the existing `ChargingProfile` until the new `ChargingProfile` is installed.

**NOTE** If the `chargingSchedulePeriod` is longer than *duration*, the remainder periods SHALL not be executed. If *duration* is longer than the `chargingSchedulePeriod`, the Charge Point SHALL keep the value of the last `chargingSchedulePeriod` until *duration* has ended.

**NOTE** When `recurrencyKind` is used in combination with a `chargingSchedule duration` shorter than the `recurrencyKind` period, the Charge Point SHALL fall back to default behaviour after the `chargingSchedule duration` ends.

## 5.17. Trigger Message



Figure 38. Sequence Diagram: Trigger Message

During normal operation, the Charge Point informs the Central System of its state and any relevant occurrences. If there is nothing to report the Charge Point will send at least a heartBeat at a predefined interval. Under normal circumstances this is just fine, but what if the Central System has (whatever) reason to doubt the last known state? What can a Central System do if a firmware update is in progress and the last status notification it received about it was much longer ago than could reasonably be expected? The same can be asked for the progress of a diagnostics request. The problem in these situations is not that the information needed isn't covered by existing messages, the problem is strictly a timing issue. The Charge Point has the information, but has no way of knowing that the Central System would like an update.

The [TriggerMessage.req](#) makes it possible for the Central System, to request the Charge Point, to send Charge Point-initiated messages. In the request the Central System indicates which message it wishes to receive. For every such requested message the Central System MAY optionally indicate to which connector this request applies. The requested message is leading: if the specified connectorId is not relevant to the message, it should be ignored. In such cases the requested message should still be sent.

Inversely, if the connectorId is relevant but absent, this should be interpreted as “for all allowed connectorId values”. For example, a request for a statusNotification for connectorId 0 is a request for the status of the Charge Point. A request for a statusNotification without connectorId is a request for multiple statusNotifications: the notification for the Charge Point itself and a notification for each of its connectors.

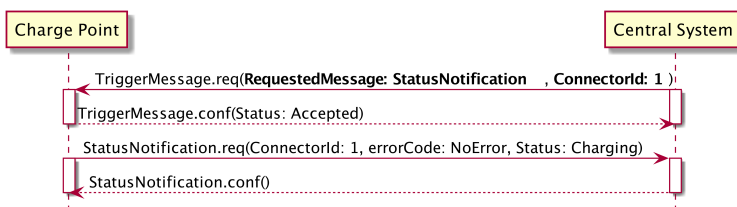


Figure 39. Sequence Diagram: Trigger Message StatusNotification Example

The Charge Point SHALL first send the TriggerMessage response, before sending the requested message. In the [TriggerMessage.conf](#) the Charge Point SHALL indicate whether it will send it or not, by returning ACCEPTED or REJECTED. It is up to the Charge Point if it accepts or rejects the request to send. If the requested message is unknown or not implemented the Charge Point SHALL return NOT\_IMPLEMENTED.

Messages that the Charge Point marks as accepted SHOULD be sent. The situation could occur that,

between accepting the request and actually sending the requested message, that same message gets sent because of normal operations. In such cases the message just sent MAY be considered as complying with the request.

The TriggerMessage mechanism is not intended to retrieve historic data. The messages it triggers should only give current information. A [MeterValues](#) message triggered in this way for instance SHOULD return the most recent measurements for all measurands configured in configuration key [MeterValuesSampledData](#). [StartTransaction](#) and [StopTransaction](#) have been left out of this mechanism because they are not state related, but by their nature describe a transition.

## 5.18. Unlock Connector

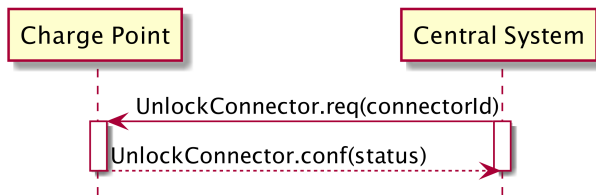


Figure 40. Sequence Diagram: Unlock Connector

Central System can request a Charge Point to unlock a connector. To do so, the Charge Point SHALL send an [UnlockConnector.req](#) PDU.

The purpose of this message: Help EV drivers that have problems unplugging their cable from the Charge Point in case of malfunction of the Connector cable retention. When a EV driver calls the CPO help-desk, an operator could manually trigger the sending of an [UnlockConnector.req](#) to the Charge Point, forcing a new attempt to unlock the connector. Hopefully this time the connector unlocks and the EV driver can unplug the cable and drive away.

The [UnlockConnector.req](#) SHOULD NOT be used to remotely stop a running transaction, use the [Remote Stop Transaction](#) instead.

Upon receipt of an [UnlockConnector.req](#) PDU, the Charge Point SHALL respond with a [UnlockConnector.conf](#) PDU. The response PDU SHALL indicate whether the Charge Point was able to unlock its connector.

If there was a transaction in progress on the specific connector, then Charge Point SHALL finish the transaction first as described in [Stop Transaction](#).

### IMPORTANT

[UnlockConnector.req](#) is intended only for unlocking the cable retention lock on the Connector, not for unlocking a connector access door.

## 5.19. Update Firmware

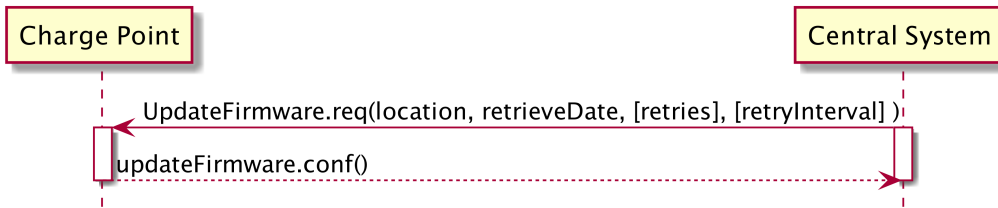


Figure 41. Sequence Diagram: Update Firmware

Central System can notify a Charge Point that it needs to update its firmware. The Central System SHALL send an [UpdateFirmware.req](#) PDU to instruct the Charge Point to install new firmware. The PDU SHALL contain a date and time after which the Charge Point is allowed to retrieve the new firmware and the location from which the firmware can be downloaded.

Upon receipt of an [UpdateFirmware.req](#) PDU, the Charge Point SHALL respond with a [UpdateFirmware.conf](#) PDU. The Charge Point SHOULD start retrieving the firmware as soon as possible after retrieve-date.

## 6. Messages

### 6.1. Authorize.req

This contains the field definition of the Authorize.req PDU sent by the Charge Point to the Central System. See also [Authorize](#)

Field Name	Field Type	Card.	Description
<b>idTag</b>	<a href="#">IdToken</a>	1..1	Required. This contains the identifier that needs to be authorized.

### 6.2. Authorize.conf

This contains the field definition of the Authorize.conf PDU sent by the Central System to the Charge Point in response to a [Authorize.req](#) PDU. See also [Authorize](#)

Field Name	Field Type	Card.	Description
<b>idTagInfo</b>	<a href="#">IdTagInfo</a>	1..1	Required. This contains information about authorization status, expiry and parent id.

### 6.3. BootNotification.req

This contains the field definition of the BootNotification.req PDU sent by the Charge Point to the Central System. See also [Boot Notification](#)

Field Name	Field Type	Card.	Description
<b>chargeBoxSerialNumber</b>	<a href="#">CiString25Type</a>	0..1	Optional. This contains a value that identifies the serial number of the Charge Box inside the Charge Point. Deprecated, will be removed in future version
<b>chargePointModel</b>	<a href="#">CiString20Type</a>	1..1	Required. This contains a value that identifies the model of the ChargePoint.



Field Name	Field Type	Card.	Description
<b>chargePointSerialNumber</b>	CiString25Type	0..1	Optional. This contains a value that identifies the serial number of the Charge Point.
<b>chargePointVendor</b>	CiString20Type	1..1	Required. This contains a value that identifies the vendor of the ChargePoint.
<b>firmwareVersion</b>	CiString50Type	0..1	Optional. This contains the firmware version of the Charge Point.
<b>iccid</b>	CiString20Type	0..1	Optional. This contains the ICCID of the modem's SIM card.
<b>imsi</b>	CiString20Type	0..1	Optional. This contains the IMSI of the modem's SIM card.
<b>meterSerialNumber</b>	CiString25Type	0..1	Optional. This contains the serial number of the main power meter of the Charge Point.
<b>meterType</b>	CiString25Type	0..1	Optional. This contains the type of the main power meter of the Charge Point.

## 6.4. BootNotification.conf

This contains the field definition of the BootNotification.conf PDU sent by the Central System to the Charge Point in response to a [BootNotification.req](#) PDU. See also [Boot Notification](#)

Field Name	Field Type	Card.	Description
<b>currentTime</b>	dateTime	1..1	Required. This contains the Central System's current time.

Field Name	Field Type	Card.	Description
<b>interval</b>	integer	1..1	Required. When <a href="#">RegistrationStatus</a> is <i>Accepted</i> , this contains the heartbeat interval in seconds. If the Central System returns something other than <i>Accepted</i> , the value of the interval field indicates the minimum wait time before sending a next <i>BootNotification</i> request.
<b>status</b>	<a href="#">RegistrationStatus</a>	1..1	Required. This contains whether the Charge Point has been registered within the System Central.

## 6.5. CancelReservation.req

This contains the field definition of the CancelReservation.req PDU sent by the Central System to the Charge Point. See also [Cancel Reservation](#)

Field Name	Field Type	Card.	Description
<b>reservationId</b>	integer	1..1	Required. Id of the reservation to cancel.

## 6.6. CancelReservation.conf

This contains the field definition of the CancelReservation.conf PDU sent by the Charge Point to the Central System in response to a [CancelReservation.req](#) PDU. See also [Cancel Reservation](#)

Field Name	Field Type	Card.	Description
<b>status</b>	<a href="#">CancelReservationStatus</a>	1..1	Required. This indicates the success or failure of the cancelling of a reservation by Central System.

## 6.7. ChangeAvailability.req

This contains the field definition of the ChangeAvailability.req PDU sent by the Central System to the Charge Point. See also [Change Availability](#)

Field Name	Field Type	Card.	Description
<b>connectorId</b>	integer connectorId >= 0	1..1	Required. The id of the connector for which availability needs to change. Id '0' (zero) is used if the availability of the Charge Point and all its connectors needs to change.
<b>type</b>	<a href="#">AvailabilityType</a>	1..1	Required. This contains the type of availability change that the Charge Point should perform.

## 6.8. ChangeAvailability.conf

This contains the field definition of the ChangeAvailability.conf PDU return by Charge Point to Central System. See also [Change Availability](#)

Field Name	Field Type	Card.	Description
<b>status</b>	<a href="#">AvailabilityStatus</a>	1..1	Required. This indicates whether the Charge Point is able to perform the availability change.

## 6.9. ChangeConfiguration.req

This contains the field definition of the ChangeConfiguration.req PDU sent by Central System to Charge Point. It is RECOMMENDED that the content and meaning of the 'key' and 'value' fields is agreed upon between Charge Point and Central System. See also [Change Configuration](#)

Field Name	Field Type	Card.	Description
<b>key</b>	<a href="#">CiString50Type</a>	1..1	Required. The name of the configuration setting to change. See for standard configuration key names and associated values
<b>value</b>	<a href="#">CiString500Type</a>	1..1	Required. The new value as string for the setting. See for standard configuration key names and associated values

## 6.10. ChangeConfiguration.conf

This contains the field definition of the ChangeConfiguration.conf PDU returned from Charge Point to Central System. See also [Change Configuration](#)

Field Name	Field Type	Card.	Description
<b>status</b>	<a href="#">ConfigurationStatus</a>	1..1	Required. Returns whether configuration change has been accepted.

## 6.11. ClearCache.req

This contains the field definition of the ClearCache.req PDU sent by the Central System to the Charge Point. See also [Clear Cache](#)

No fields are defined.

## 6.12. ClearCache.conf

This contains the field definition of the ClearCache.conf PDU sent by the Charge Point to the Central System in response to a [ClearCache.req](#) PDU. See also [Clear Cache](#)

Field Name	Field Type	Card.	Description
<b>status</b>	<a href="#">ClearCacheStatus</a>	1..1	Required. Accepted if the Charge Point has executed the request, otherwise rejected.

## 6.13. ClearChargingProfile.req

This contains the field definition of the ClearChargingProfile.req PDU sent by the Central System to the Charge Point.

The Central System can use this message to clear (remove) either a specific charging profile (denoted by id) or a selection of charging profiles that match with the values of the optional connectorId, stackLevel and [chargingProfilePurpose](#) fields. See also [Clear Charging Profile](#)

Field Name	Field Type	Card.	Description
<b>id</b>	integer	0..1	Optional. The ID of the charging profile to clear.
<b>connectorId</b>	integer	0..1	Optional. Specifies the ID of the connector for which to clear charging profiles. A connectorId of zero (0) specifies the charging profile for the overall Charge Point. Absence of this parameter means the clearing applies to all charging profiles that match the other criteria in the request.
<b>chargingProfilePurpose</b>	<a href="#">ChargingProfilePurpose Type</a>	0..1	Optional. Specifies to purpose of the charging profiles that will be cleared, if they meet the other criteria in the request.
<b>stackLevel</b>	integer	0..1	Optional. specifies the stackLevel for which charging profiles will be cleared, if they meet the other criteria in the request

## 6.14. ClearChargingProfile.conf

This contains the field definition of the ClearChargingProfile.conf PDU sent by the Charge Point to the Central System in response to a [ClearChargingProfile.req](#) PDU. See also [Clear Charging Profile](#)

Field Name	Field Type	Card.	Description
<b>status</b>	<a href="#">ClearChargingProfileStatus</a>	1..1	Required. Indicates if the Charge Point was able to execute the request.

## 6.15. DataTransfer.req

This contains the field definition of the DataTransfer.req PDU sent either by the Central System to the Charge Point or vice versa. See also [Data Transfer](#)

Field Name	Field Type	Card.	Description
<b>vendorId</b>	<a href="#">CiString255Type</a>	1..1	Required. This identifies the Vendor specific implementation
<b>messageId</b>	<a href="#">CiString50Type</a>	0..1	Optional. Additional identification field
<b>data</b>	Text Length undefined	0..1	Optional. Data without specified length or format.

## 6.16. DataTransfer.conf

This contains the field definition of the DataTransfer.conf PDU sent by the Charge Point to the Central System or vice versa in response to a [DataTransfer.req](#) PDU. See also [Data Transfer](#)

Field Name	Field Type	Card.	Description
<b>status</b>	<a href="#">DataTransferStatus</a>	1..1	Required. This indicates the success or failure of the data transfer.
<b>data</b>	Text Length undefined	0..1	Optional. Data in response to request.

## 6.17. DiagnosticsStatusNotification.req

This contains the field definition of the DiagnosticsStatusNotification.req PDU sent by the Charge Point to the Central System. See also [Diagnostics Status Notification](#)

Field Name	Field Type	Card.	Description
<b>status</b>	<a href="#">DiagnosticsStatus</a>	1..1	Required. This contains the status of the diagnostics upload.

## 6.18. DiagnosticsStatusNotification.conf

This contains the field definition of the DiagnosticsStatusNotification.conf PDU sent by the Central System to the Charge Point in response to a [DiagnosticsStatusNotification.req](#) PDU. See also [Diagnostics Status Notification](#)

No fields are defined.

## 6.19. FirmwareStatusNotification.req

This contains the field definition of the FirmwareStatusNotifitacion.req PDU sent by the Charge Point to the Central System. See also [Firmware Status Notification](#)

Field Name	Field Type	Card.	Description
<b>status</b>	<a href="#">FirmwareStatus</a>	1..1	Required. This contains the progress status of the firmware installation.

## 6.20. FirmwareStatusNotification.conf

This contains the field definition of the FirmwareStatusNotification.conf PDU sent by the Central System to the Charge Point in response to a [FirmwareStatusNotification.req](#) PDU. See also [Firmware Status Notification](#)

No fields are defined.

## 6.21. GetCompositeSchedule.req

This contains the field definition of the GetCompositeSchedule.req PDU sent by the Central System to the Charge Point. See also [Get Composite Schedule](#)

Field Name	Field Type	Card.	Description
<b>connectorId</b>	integer	1..1	Required. The ID of the Connector for which the schedule is requested. When ConnectorId=0, the Charge Point will calculate the expected consumption for the grid connection.
<b>duration</b>	integer	1..1	Required. Time in seconds. length of requested schedule
<b>chargingRateUnit</b>	<a href="#">ChargingRateUnitType</a>	0..1	Optional. Can be used to force a power or current profile

## 6.22. GetCompositeSchedule.conf

This contains the field definition of the GetCompositeSchedule.conf PDU sent by the Charge Point to the Central System in response to a [GetCompositeSchedule.req](#) PDU. See also [Get Composite Schedule](#)

Field Name	Field Type	Card.	Description
<b>status</b>	<a href="#">GetCompositeScheduleStatus</a>	1..1	Required. Status of the request. The Charge Point will indicate if it was able to process the request
<b>connectorId</b>	integer	0..1	Optional. The charging schedule contained in this notification applies to a Connector.
<b>scheduleStart</b>	DateTime	0..1	Optional. Time. Periods contained in the charging profile are relative to this point in time.
<b>chargingSchedule</b>	<a href="#">ChargingSchedule</a>	0..1	Optional. Planned Composite Charging Schedule, the energy consumption over time. Always relative to ScheduleStart.



## 6.23. GetConfiguration.req

This contains the field definition of the GetConfiguration.req PDU sent by the the Central System to the Charge Point. See also [Get Configuration](#)

Field Name	Field Type	Card.	Description
<b>key</b>	<a href="#">CiString50Type</a>	0..*	Optional. List of keys for which the configuration value is requested.

## 6.24. GetConfiguration.conf

This contains the field definition of the GetConfiguration.conf PDU sent by Charge Point the to the Central System in response to a [GetConfiguration.req](#). See also [Get Configuration](#)

Field Name	Field Type	Card.	Description
<b>configurationKey</b>	<a href="#">KeyValue</a>	0..*	Optional. List of requested or known keys
<b>unknownKey</b>	<a href="#">CiString50Type</a>	0..*	Optional. Requested keys that are unknown

## 6.25. GetDiagnostics.req

This contains the field definition of the GetDiagnostics.req PDU sent by the Central System to the Charge Point. See also [Get Diagnostics](#)

Field Name	Field Type	Card.	Description
<b>location</b>	anyURI	1..1	Required. This contains the location (directory) where the diagnostics file shall be uploaded to.
<b>retries</b>	integer	0..1	Optional. This specifies how many times Charge Point must try to upload the diagnostics before giving up. If this field is not present, it is left to Charge Point to decide how many times it wants to retry.

Field Name	Field Type	Card.	Description
<b>retryInterval</b>	integer	0..1	Optional. The interval in seconds after which a retry may be attempted. If this field is not present, it is left to Charge Point to decide how long to wait between attempts.
<b>startTime</b>	dateTime	0..1	Optional. This contains the date and time of the oldest logging information to include in the diagnostics.
<b>stopTime</b>	dateTime	0..1	Optional. This contains the date and time of the latest logging information to include in the diagnostics.

## 6.26. GetDiagnostics.conf

This contains the field definition of the GetDiagnostics.conf PDU sent by the Charge Point to the Central System in response to a [GetDiagnostics.req](#) PDU. See also [Get Diagnostics](#)

Field Name	Field Type	Card.	Description
<b>fileName</b>	<a href="#">CiString255Type</a>	0..1	Optional. This contains the name of the file with diagnostic information that will be uploaded. This field is not present when no diagnostic information is available.

## 6.27. GetLocalListVersion.req

This contains the field definition of the GetLocalListVersion.req PDU sent by the Central System to the Charge Point. See also [Get Local List Version](#)

No fields are defined.

## 6.28. GetLocalListVersion.conf

This contains the field definition of the GetLocalListVersion.conf PDU sent by the Charge Point to Central System in response to a [GetLocalListVersion.req](#) PDU. See also [Get Local List Version](#)

Field Name	Field Type	Card.	Description
<b>listVersion</b>	integer	1..1	Required. This contains the current version number of the local authorization list in the Charge Point.

## 6.29. Heartbeat.req

This contains the field definition of the Heartbeat.req PDU sent by the Charge Point to the Central System. See also [Heartbeat](#)

No fields are defined.

## 6.30. Heartbeat.conf

This contains the field definition of the Heartbeat.conf PDU sent by the Central System to the Charge Point in response to a [Heartbeat.req](#) PDU. See also [Heartbeat](#)

Field Name	Field Type	Card.	Description
<b>currentTime</b>	dateTime	1..1	Required. This contains the current time of the Central System.

## 6.31. MeterValues.req

This contains the field definition of the MeterValues.req PDU sent by the Charge Point to the Central System. See also [Meter Values](#)

Field Name	Field Type	Card.	Description
<b>connectorId</b>	integer connectorId >= 0	1..1	Required. This contains a number (>0) designating a connector of the Charge Point. '0' (zero) is used to designate the main powermeter.

Field Name	Field Type	Card.	Description
<b>transactionId</b>	integer	0..1	Optional. The transaction to which these meter samples are related.
<b>meterValue</b>	<a href="#">MeterValue</a>	1..*	Required. The sampled meter values with timestamps.

## 6.32. MeterValues.conf

This contains the field definition of the MeterValues.conf PDU sent by the Central System to the Charge Point in response to a [MeterValues.req](#) PDU. See also [Meter Values](#)

No fields are defined.

## 6.33. RemoteStartTransaction.req

This contains the field definitions of the RemoteStartTransaction.req PDU sent to Charge Point by Central System. See also [Remote Start Transaction](#)

Field Name	Field Type	Card.	Description
<b>connectorId</b>	integer	0..1	Optional. Number of the connector on which to start the transaction. connectorId SHALL be > 0
<b>idTag</b>	<a href="#">IdToken</a>	1..1	Required. The identifier that Charge Point must use to start a transaction.
<b>chargingProfile</b>	<a href="#">ChargingProfile</a>	0..1	Optional. Charging Profile to be used by the Charge Point for the requested transaction. <a href="#">ChargingProfilePurpose</a> MUST be set to <a href="#">TxProfile</a>

## 6.34. RemoteStartTransaction.conf

This contains the field definitions of the RemoteStartTransaction.conf PDU sent from Charge Point to Central System. See also [Remote Start Transaction](#)

Field Name	Field Type	Card.	Description
<b>status</b>	<a href="#">RemoteStartStopStatus</a>	1..1	Required. Status indicating whether Charge Point accepts the request to start a transaction.

## 6.35. RemoteStopTransaction.req

This contains the field definitions of the RemoteStopTransaction.req PDU sent to Charge Point by Central System. See also [Remote Stop Transaction](#)

Field Name	Field Type	Card.	Description
<b>transactionId</b>	integer	1..1	Required. The identifier of the transaction which Charge Point is requested to stop.

## 6.36. RemoteStopTransaction.conf

This contains the field definitions of the RemoteStopTransaction.conf PDU sent from Charge Point to Central System. See also [Remote Stop Transaction](#)

Field Name	Field Type	Card.	Description
<b>status</b>	<a href="#">RemoteStartStopStatus</a>	1..1	Required. Status indicating whether Charge Point accepts the request to stop a transaction.

## 6.37. ReserveNow.req

This contains the field definition of the ReserveNow.req PDU sent by the Central System to the Charge Point. See also [Reserve Now](#)

Field Name	Field Type	Card.	Description
<b>connectorId</b>	integer connectorId >= 0	1..1	Required. This contains the id of the connector to be reserved. A value of 0 means that the reservation is not for a specific connector.

Field Name	Field Type	Card.	Description
<b>expiryDate</b>	dateTime	1..1	Required. This contains the date and time when the reservation ends.
<b>idTag</b>	<a href="#">IdToken</a>	1..1	Required. The identifier for which the Charge Point has to reserve a connector.
<b>parentIdTag</b>	<a href="#">IdToken</a>	0..1	Optional. The parent idTag.
<b>reservationId</b>	integer	1..1	Required. Unique id for this reservation.

## 6.38. ReserveNow.conf

This contains the field definition of the ReserveNow.conf PDU sent by the Charge Point to the Central System in response to a [ReserveNow.req](#) PDU. See also [Reserve Now](#)

Field Name	Field Type	Card.	Description
<b>status</b>	<a href="#">ReservationStatus</a>	1..1	Required. This indicates the success or failure of the reservation.

## 6.39. Reset.req

This contains the field definition of the Reset.req PDU sent by the Central System to the Charge Point. See also [Reset](#)

Field Name	Field Type	Card.	Description
<b>type</b>	<a href="#">ResetType</a>	1..1	Required. This contains the type of reset that the Charge Point should perform.

## 6.40. Reset.conf

This contains the field definition of the Reset.conf PDU sent by the Charge Point to the Central System in response to a [Reset.req](#) PDU. See also [Reset](#)

Field Name	Field Type	Card.	Description
<b>status</b>	<a href="#">ResetStatus</a>	1..1	Required. This indicates whether the Charge Point is able to perform the reset.

## 6.41. SendLocalList.req

This contains the field definition of the SendLocalList.req PDU sent by the Central System to the Charge Point.

If no (empty) localAuthorizationList is given and the updateType is Full, all identifications are removed from the list. Requesting a Differential update without (empty) localAuthorizationList will have no effect on the list. All idTags in the localAuthorizationList MUST be unique, no duplicate values are allowed. See also [Send Local List](#)

Field Name	Field Type	Card.	Description
<b>listVersion</b>	integer	1..1	Required. In case of a full update this is the version number of the full list. In case of a differential update it is the version number of the list after the update has been applied.
<b>localAuthorizationList</b>	<a href="#">AuthorizationData</a>	0..*	Optional. In case of a full update this contains the list of values that form the new local authorization list. In case of a differential update it contains the changes to be applied to the local authorization list in the Charge Point. Maximum number of <a href="#">AuthorizationData</a> elements is available in the configuration key: <a href="#">SendLocalListMaxLength</a>
<b>updateType</b>	<a href="#">UpdateType</a>	1..1	Required. This contains the type of update (full or differential) of this request.

## 6.42. SendLocalList.conf

This contains the field definition of the SendLocalList.conf PDU sent by the Charge Point to the Central System in response to a [SendLocalList.req](#) PDU. See also [Send Local List](#)

Field Name	Field Type	Card.	Description
<b>status</b>	<a href="#">UpdateStatus</a>	1..1	Required. This indicates whether the Charge Point has successfully received and applied the update of the local authorization list.

## 6.43. SetChargingProfile.req

This contains the field definition of the SetChargingProfile.req PDU sent by the Central System to the Charge Point.

The Central System uses this message to send charging profiles to a Charge Point. See also [Set Charging Profile](#)

Field Name	Field Type	Card.	Description
<b>connectorId</b>	integer	1..1	Required. The connector to which the charging profile applies. If connectorId = 0, the message contains an overall limit for the Charge Point.
<b>csChargingProfiles</b>	<a href="#">ChargingProfile</a>	1..1	Required. The charging profile to be set at the Charge Point.

## 6.44. SetChargingProfile.conf

This contains the field definition of the SetChargingProfile.conf PDU sent by the Charge Point to the Central System in response to a [SetChargingProfile.req](#) PDU. See also [Set Charging Profile](#)



Field Name	Field Type	Card.	Description
<b>status</b>	<a href="#">ChargingProfileStatus</a>	1..1	Required. Returns whether the Charge Point has been able to process the message successfully. This does not guarantee the schedule will be followed to the letter. There might be other constraints the Charge Point may need to take into account.

## 6.45. StartTransaction.req

This section contains the field definition of the StartTransaction.req PDU sent by the Charge Point to the Central System. See also [Start Transaction](#)

Field Name	Field Type	Card.	Description
<b>connectorId</b>	integer connectorId > 0	1..1	Required. This identifies which connector of the Charge Point is used.
<b>idTag</b>	<a href="#">IdToken</a>	1..1	Required. This contains the identifier for which a transaction has to be started.
<b>meterStart</b>	integer	1..1	Required. This contains the meter value in Wh for the connector at start of the transaction.
<b>reservationId</b>	integer	0..1	Optional. This contains the id of the reservation that terminates as a result of this transaction.
<b>timestamp</b>	dateTime	1..1	Required. This contains the date and time on which the transaction is started.

## 6.46. StartTransaction.conf

This contains the field definition of the StartTransaction.conf PDU sent by the Central System to the Charge Point in response to a [StartTransaction.req](#) PDU. See also [Start Transaction](#)

Field Name	Field Type	Card.	Description
<b>idTagInfo</b>	<a href="#">IdTagInfo</a>	1..1	Required. This contains information about authorization status, expiry and parent id.
<b>transactionId</b>	integer	1..1	Required. This contains the transaction id supplied by the Central System.

## 6.47. StatusNotification.req

This contains the field definition of the StatusNotification.req PDU sent by the Charge Point to the Central System. See also [Status Notification](#)

Field Name	Field Type	Card.	Description
<b>connectorId</b>	integer connectorId >= 0	1..1	Required. The id of the connector for which the status is reported. Id '0' (zero) is used if the status is for the Charge Point main controller.
<b>errorCode</b>	<a href="#">ChargePointErrorCode</a>	1..1	Required. This contains the error code reported by the Charge Point.
<b>info</b>	<a href="#">CiString50Type</a>	0..1	Optional. Additional free format information related to the error.
<b>status</b>	<a href="#">ChargePointStatus</a>	1..1	Required. This contains the current status of the Charge Point.
<b>timestamp</b>	dateTime	0..1	Optional. The time for which the status is reported. If absent time of receipt of the message will be assumed.

Field Name	Field Type	Card.	Description
<b>vendorId</b>	<a href="#">CiString255Type</a>	0..1	Optional. This identifies the vendor-specific implementation.
<b>vendorErrorCode</b>	<a href="#">CiString50Type</a>	0..1	Optional. This contains the vendor-specific error code.

## 6.48. StatusNotification.conf

This contains the field definition of the [StatusNotification.conf](#) PDU sent by the Central System to the Charge Point in response to an [StatusNotification.req](#) PDU. See also [Status Notification](#)

No fields are defined.

## 6.49. StopTransaction.req

This contains the field definition of the StopTransaction.req PDU sent by the Charge Point to the Central System. See also [Stop Transaction](#)

Field Name	Field Type	Card.	Description
<b>idTag</b>	<a href="#">IdToken</a>	0..1	Optional. This contains the identifier which requested to stop the charging. It is optional because a Charge Point may terminate charging without the presence of an idTag, e.g. in case of a reset. A Charge Point SHALL send the idTag if known.
<b>meterStop</b>	integer	1..1	Required. This contains the meter value in Wh for the connector at end of the transaction.
<b>timestamp</b>	dateTime	1..1	Required. This contains the date and time on which the transaction is stopped.

Field Name	Field Type	Card.	Description
<b>transactionId</b>	integer	1..1	Required. This contains the transaction-id as received by the <a href="#">StartTransaction.conf</a> .
<b>reason</b>	<a href="#">Reason</a>	0..1	Optional. This contains the reason why the transaction was stopped. MAY only be omitted when the <a href="#">Reason</a> is "Local".
<b>transactionData</b>	<a href="#">MeterValue</a>	0..*	Optional. This contains transaction usage details relevant for billing purposes.

## 6.50. StopTransaction.conf

This contains the field definition of the StopTransaction.conf PDU sent by the Central System to the Charge Point in response to a [StopTransaction.req](#) PDU. See also [Stop Transaction](#)

Field Name	Field Type	Card.	Description
<b>idTagInfo</b>	<a href="#">IdTagInfo</a>	0..1	Optional. This contains information about authorization status, expiry and parent id. It is optional, because a transaction may have been stopped without an identifier.

## 6.51. TriggerMessage.req

This contains the field definition of the TriggerMessage.req PDU sent by the Central System to the Charge Point. See also [Trigger Message](#)

Field Name	Field Type	Card.	Description
<b>requestedMessage</b>	<a href="#">MessageTrigger</a>	1..1	Required.
<b>connectorId</b>	integer connectorId > 0	0..1	Optional. Only filled in when request applies to a specific connector.

## 6.52. TriggerMessage.conf

This contains the field definition of the TriggerMessage.conf PDU sent by the Charge Point to the Central System in response to a [TriggerMessage.req](#) PDU. See also [Trigger Message](#)

Field Name	Field Type	Card.	Description
<b>status</b>	<a href="#">TriggerMessageStatus</a>	1..1	Required. Indicates whether the Charge Point will send the requested notification or not.

## 6.53. UnlockConnector.req

This contains the field definition of the UnlockConnector.req PDU sent by the Central System to the Charge Point. See also [Unlock Connector](#)

Field Name	Field Type	Card.	Description
<b>connectorId</b>	integer connectorId > 0	1..1	Required. This contains the identifier of the connector to be unlocked.

## 6.54. UnlockConnector.conf

This contains the field definition of the UnlockConnector.conf PDU sent by the Charge Point to the Central System in response to an [UnlockConnector.req](#) PDU. See also [Unlock Connector](#)

Field Name	Field Type	Card.	Description
<b>status</b>	<a href="#">UnlockStatus</a>	1..1	Required. This indicates whether the Charge Point has unlocked the connector.

## 6.55. UpdateFirmware.req

This contains the field definition of the UpdateFirmware.req PDU sent by the Central System to the Charge Point. See also [Update Firmware](#)

Field Name	Field Type	Card.	Description
<b>location</b>	anyURI	1..1	Required. This contains a string containing a URI pointing to a location from which to retrieve the firmware.
<b>retries</b>	integer	0..1	Optional. This specifies how many times Charge Point must try to download the firmware before giving up. If this field is not present, it is left to Charge Point to decide how many times it wants to retry.
<b>retrieveDate</b>	dateTime	1..1	Required. This contains the date and time after which the Charge Point must retrieve the (new) firmware.
<b>retryInterval</b>	integer	0..1	Optional. The interval in seconds after which a retry may be attempted. If this field is not present, it is left to Charge Point to decide how long to wait between attempts.

## 6.56. UpdateFirmware.conf

This contains the field definition of the UpdateFirmware.conf PDU sent by the Charge Point to the Central System in response to a [UpdateFirmware.req](#) PDU. See also [Update Firmware](#)

No fields are defined.

# 7. Types

## 7.1. AuthorizationData

*Class*

Elements that constitute an entry of a Local Authorization List update.

Field Name	Field Type	Card.	Description
<b>idTag</b>	<a href="#">IdToken</a>	1..1	Required. The identifier to which this authorization applies.
<b>idTagInfo</b>	<a href="#">IdTagInfo</a>	0..1	Optional. (Required when UpdateType is Full) This contains information about authorization status, expiry and parent id. For a Differential update the following applies: If this element is present, then this entry SHALL be added or updated in the Local Authorization List. If this element is absent, than the entry for this idtag in the Local Authorization List SHALL be deleted.

## 7.2. AuthorizationStatus

*Enumeration*

Status in a response to an [Authorize.req](#).

Value	Description
<b>Accepted</b>	Identifier is allowed for charging.
<b>Blocked</b>	Identifier has been blocked. Not allowed for charging.
<b>Expired</b>	Identifier has expired. Not allowed for charging.
<b>Invalid</b>	Identifier is unknown. Not allowed for charging.

Value	Description
<b>ConcurrentTx</b>	Identifier is already involved in another transaction and multiple transactions are not allowed. (Only relevant for a <a href="#">StartTransaction.req.</a> )

## 7.3. AvailabilityStatus

*Enumeration*

Status returned in response to [ChangeAvailability.req.](#)

Value	Description
<b>Accepted</b>	Request has been accepted and will be executed.
<b>Rejected</b>	Request has not been accepted and will not be executed.
<b>Scheduled</b>	Request has been accepted and will be executed when transaction(s) in progress have finished.

## 7.4. AvailabilityType

*Enumeration*

Requested availability change in [ChangeAvailability.req.](#)

Value	Description
<b>Inoperative</b>	Charge point is not available for charging.
<b>Operative</b>	Charge point is available for charging.

## 7.5. CancelReservationStatus

*Enumeration*

Status in [CancelReservation.conf.](#)

Value	Description
<b>Accepted</b>	Reservation for the identifier has been cancelled.
<b>Rejected</b>	Reservation could not be cancelled, because there is no reservation active for the identifier.



## 7.6. ChargePointErrorCode

*Enumeration*

Charge Point status reported in [StatusNotification.req](#).

Value	Description
<b>ConnectorLockFailure</b>	Failure to lock or unlock connector.
<b>EVCommunicationError</b>	Communication failure with the vehicle, might be Mode 3 or other communication protocol problem. This is not a real error in the sense that the Charge Point doesn't need to go to the faulted state. Instead, it should go to the SuspendedEVSE state.
<b>GroundFailure</b>	Ground fault circuit interrupter has been activated.
<b>HighTemperature</b>	Temperature inside Charge Point is too high.
<b>InternalError</b>	Error in internal hard- or software component.
<b>LocalListConflict</b>	The authorization information received from the Central System is in conflict with the LocalAuthorizationList.
<b>NoError</b>	No error to report.
<b>OtherError</b>	Other type of error. More information in vendorErrorCode.
<b>OverCurrentFailure</b>	Over current protection device has tripped.
<b>OverVoltage</b>	Voltage has risen above an acceptable level.
<b>PowerMeterFailure</b>	Failure to read power meter.
<b>PowerSwitchFailure</b>	Failure to control power switch.
<b>ReaderFailure</b>	Failure with idTag reader.
<b>ResetFailure</b>	Unable to perform a reset.
<b>UnderVoltage</b>	Voltage has dropped below an acceptable level.
<b>WeakSignal</b>	Wireless communication device reports a weak signal.

## 7.7. ChargePointStatus

*Enumeration*

Status reported in [StatusNotification.req](#). A status can be reported for the Charge Point main controller (connectorId = 0) or for a specific connector. Status for the Charge Point main controller is a subset of the enumeration: *Available*, *Unavailable* or *Faulted*.

States considered Operative are: *Available*, *Preparing*, *Charging*, *SuspendedEVSE*, *SuspendedEV*, *Finishing*, *Reserved*. States considered Inoperative are: *Unavailable*, *Faulted*.

<b>Status</b>	<b>Condition</b>
<b>Available</b>	When a Connector becomes available for a new user (Operative)
<b>Preparing</b>	When a Connector becomes no longer available for a new user but no charging session is active. Typically a Connector is occupied when a user presents a tag, inserts a cable or a vehicle occupies the parking bay (Operative)
<b>Charging</b>	When the contactor of a Connector closes, allowing the vehicle to charge (Operative)
<b>SuspendedEVSE</b>	When the contactor of a Connector opens upon request of the EVSE, e.g. due to a smart charging restriction or as the result of <a href="#">StartTransaction.conf</a> indicating that charging is not allowed (Operative)
<b>SuspendedEV</b>	When the EVSE is ready to deliver energy but contactor is open, e.g. the EV is not ready.
<b>Finishing</b>	When a charging session has stopped at a Connector, but the Connector is not yet available for a new user, e.g. the cable has not been removed or the vehicle has not left the parking bay (Operative)
<b>Reserved</b>	When a Connector becomes reserved as a result of a <a href="#">Reserve Now</a> command (Operative)

Status	Condition
<b>Unavailable</b>	When a Connector becomes unavailable as the result of a Change Availability command or an event upon which the Charge Point transitions to unavailable at its discretion. Upon receipt of a <a href="#">Change Availability</a> command, the status MAY change immediately or the change MAY be scheduled. When scheduled, the <a href="#">Status Notification</a> shall be send when the availability change becomes effective (Inoperative)
<b>Faulted</b>	When a Charge Point or connector has reported an error and is not available for energy delivery . (Inoperative).

## 7.8. ChargingProfile

### Class

A ChargingProfile consists of a [ChargingSchedule](#), describing the amount of power or current that can be delivered per time interval.

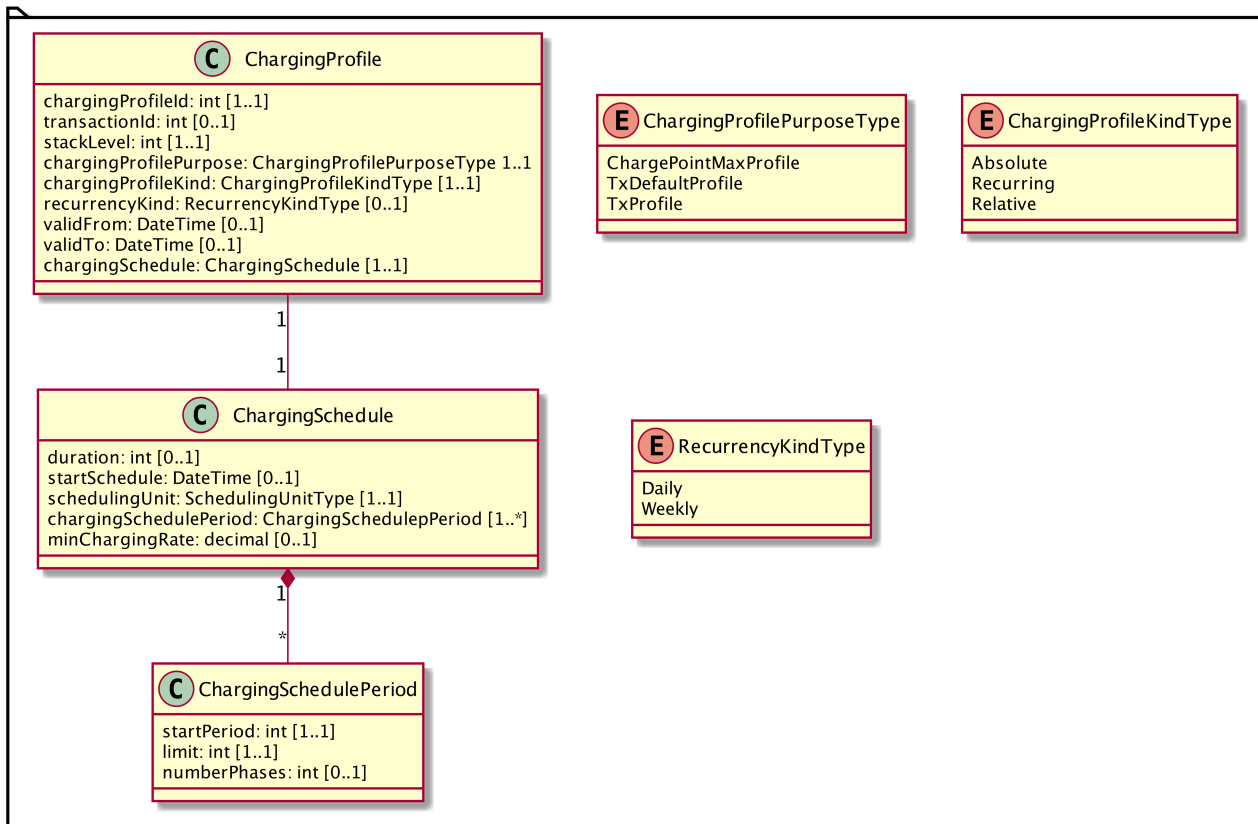


Figure 42. Class Diagram: ChargingProfile

Field Name	Field Type	Card.	Description
<b>chargingProfileId</b>	integer	1..1	Required. Unique identifier for this profile.
<b>transactionId</b>	integer	0..1	Optional. Only valid if ChargingProfilePurpose is set to <a href="#">TxProfile</a> , the transactionId MAY be used to match the profile to a specific transaction.
<b>stackLevel</b>	integer >=0	1..1	Required. Value determining level in hierarchy stack of profiles. Higher values have precedence over lower values. Lowest level is 0.
<b>chargingProfilePurpose</b>	<a href="#">ChargingProfilePurposeType</a>	1..1	Required. Defines the purpose of the schedule transferred by this message.
<b>chargingProfileKind</b>	<a href="#">ChargingProfileKindType</a>	1..1	Required. Indicates the kind of schedule.
<b>recurrencyKind</b>	<a href="#">RecurrencyKindType</a>	0..1	Optional. Indicates the start point of a recurrence.
<b>validFrom</b>	DateTime	0..1	Optional. Point in time at which the profile starts to be valid. If absent, the profile is valid as soon as it is received by the Charge Point. Not to be used when <a href="#">ChargingProfilePurpose</a> is <a href="#">TxProfile</a> .

Field Name	Field Type	Card.	Description
<b>validTo</b>	DateTime	0..1	Optional. Point in time at which the profile stops to be valid. If absent, the profile is valid until it is replaced by another profile. Not to be used when <a href="#">ChargingProfilePurpose</a> is <a href="#">TxProfile</a> .
<b>chargingSchedule</b>	<a href="#">ChargingSchedule</a>	1..1	Required. Contains limits for the available power or current over time.

## 7.9. ChargingProfileKindType

*Enumeration*

Value	Description
<b>Absolute</b>	Schedule periods are relative to a fixed point in time defined in the schedule.
<b>Recurring</b>	The schedule restarts periodically at the first schedule period.
<b>Relative</b>	Schedule periods are relative to a situation-specific start point (such as the start of a session) that is determined by the charge point.

## 7.10. ChargingProfilePurposeType

*Enumeration*

Value	Description
<a href="#">ChargePointMaxProfile</a>	Configuration for the maximum power or current available for an entire Charge Point. <a href="#">SetChargingProfile.req</a> message.
<a href="#">TxDefaultProfile</a>	Default profile to be used for new transactions.
<a href="#">TxProfile</a>	Profile with constraints to be imposed by the Charge Point on the current transaction. A profile with this purpose SHALL cease to be valid when the transaction terminates.

## 7.11. ChargingProfileStatus

*Enumeration*

Status returned in response to [SetChargingProfile.req](#).

Value	Description
Accepted	Request has been accepted and will be executed.
Rejected	Request has not been accepted and will not be executed.
NotSupported	Charge Point indicates that the request is not supported.

## 7.12. ChargingRateUnitType

*Enumeration*

Unit in which a charging schedule is defined, as used in: [GetCompositeSchedule.req](#) and [ChargingSchedule](#)

Value	Description
W	Watts (power).
A	Amperes (current).

## 7.13. ChargingSchedule

*Class*

Field Name	Field Type	Card.	Description
duration	integer	0..1	Optional. Duration of the charging schedule in seconds. If the duration is left empty, the last period will continue indefinitely or until end of the transaction in case startSchedule is absent.

Field Name	Field Type	Card.	Description
<b>startSchedule</b>	DateTime	0..1	Optional. Starting point of an absolute schedule. If absent the schedule will be relative to start of charging.
<b>chargingRateUnit</b>	<a href="#">ChargingRateUnitType</a>	1..1	Required. The unit of measure Limit is expressed in.
<b>chargingSchedulePeriod</b>	<a href="#">ChargingSchedulePeriod</a>	1..*	Required. List of <a href="#">ChargingSchedulePeriod</a> elements defining maximum power or current usage over time.
<b>minChargingRate</b>	decimal	0..1	Optional. Minimum charging rate supported by the electric vehicle. The unit of measure is defined by the <code>chargingRateUnit</code> . This parameter is intended to be used by a local smart charging algorithm to optimize the power allocation for in the case a charging process is inefficient at lower charging rates. Accepts at most one digit fraction (e.g. 8.1)

## 7.14. ChargingSchedulePeriod

*Class*

Field Name	Field Type	Card.	Description
<b>startPeriod</b>	integer	1..1	Required. Start of the period, in seconds from the start of schedule. The value of <code>StartPeriod</code> also defines the stop time of the previous period.

Field Name	Field Type	Card.	Description
<b>limit</b>	decimal	1..1	Required. Power limit during the schedule period, expressed in Amperes. Accepts at most one digit fraction (e.g. 8.1).
<b>numberPhases</b>	integer	0..1	Optional. The number of phases that can be used for charging. If a number of phases is needed, numberPhases=3 will be assumed unless another number is given.

## 7.15. CiString20Type

*Class*

Generic used case insensitive string of 20 characters.

Field Name	Field Type	Description
<b>cistring20</b>	CiString[20]	String is case insensitive.

## 7.16. CiString25Type

*Class*

Generic used case insensitive string of 25 characters.

Field Name	Field Type	Description
<b>cistring25</b>	CiString[25]	String is case insensitive.

## 7.17. CiString50Type

*Class*

Generic used case insensitive string of 50 characters.

Field Name	Field Type	Description
<b>ciString50</b>	CiString[50]	String is case insensitive.



## 7.18. CiString255Type

*Class*

Generic used case insensitive string of 255 characters.

Field Name	Field Type	Description
<b>cistring255</b>	CiString[255]	String is case insensitive.

## 7.19. CiString500Type

*Class*

Generic used case insensitive string of 500 characters.

Field Name	Field Type	Description
<b>ciString500</b>	CiString[500]	String is case insensitive.

## 7.20. ClearCacheStatus

*Enumeration*

Status returned in response to [ClearCache.req](#).

Value	Description
<b>Accepted</b>	Command has been executed.
<b>Rejected</b>	Command has not been executed.

## 7.21. ClearChargingProfileStatus

*Enumeration*

Status returned in response to [ClearChargingProfile.req](#).

Value	Description
<b>Accepted</b>	Request has been accepted and will be executed.
<b>Unknown</b>	No Charging Profile(s) were found matching the request.

## 7.22. ConfigurationStatus

*Enumeration*

Status in [ChangeConfiguration.conf](#).

Value	Description
Accepted	Configuration key supported and setting has been changed.
Rejected	Configuration key supported, but setting could not be changed.
RebootRequired	Configuration key supported and setting has been changed, but change will be available after reboot (Charge Point will not reboot itself)
NotSupported	Configuration key is not supported.

## 7.23. DataTransferStatus

*Enumeration*

Status in [DataTransfer.conf](#).

Value	Description
Accepted	Message has been accepted and the contained request is accepted.
Rejected	Message has been accepted but the contained request is rejected.
UnknownMessageId	Message could not be interpreted due to unknown messageId string.
UnknownVendorId	Message could not be interpreted due to unknown vendorId string.

## 7.24. DiagnosticsStatus

*Enumeration*

Status in [DiagnosticsStatusNotification.req](#).

Value	Description
Idle	Charge Point is not performing diagnostics related tasks. Status Idle SHALL only be used as in a <a href="#">DiagnosticsStatusNotification.req</a> that was triggered by a <a href="#">TriggerMessage.req</a>
Uploaded	Diagnostics information has been uploaded.
UploadFailed	Uploading of diagnostics failed.
Uploading	File is being uploaded.

## 7.25. FirmwareStatus

### Enumeration

Status of a firmware download as reported in [FirmwareStatusNotification.req](#).

Value	Description
Downloaded	New firmware has been downloaded by Charge Point.
DownloadFailed	Charge point failed to download firmware.
Downloading	Firmware is being downloaded.
Idle	Charge Point is not performing firmware update related tasks. Status Idle SHALL only be used as in a <a href="#">FirmwareStatusNotification.req</a> that was triggered by a <a href="#">TriggerMessage.req</a>
InstallationFailed	Installation of new firmware has failed.
Installing	Firmware is being installed.
Installed	New firmware has successfully been installed in charge point.

## 7.26. GetCompositeScheduleStatus

### Enumeration

Status returned in response to [GetCompositeSchedule.req](#).

Value	Description
Accepted	Request has been accepted and will be executed.

Value	Description
Rejected	Request has not been accepted and will not be executed.

## 7.27. IdTagInfo

### Class

Contains status information about an identifier. It is returned in Authorize, Start Transaction and Stop Transaction responses.

If expiryDate is not given, the status has no end date.

Field Name	Field Type	Description
expiryDate	dateTime	Optional. This contains the date at which idTag should be removed from the Authorization Cache.
parentIdTag	<a href="#">IdToken</a>	Optional. This contains the parent-identifier.
status	<a href="#">AuthorizationStatus</a>	Required. This contains whether the idTag has been accepted or not by the Central System.

## 7.28. IdToken

### Class

Contains the identifier to use for authorization. It is a case insensitive string. In future releases this may become a complex type to support multiple forms of identifiers.

Field Name	Field Type	Description
IdToken	String[20]	Required. IdToken is case insensitive.

## 7.29. KeyValue

### Class

Contains information about a specific configuration key. It is returned in [GetConfiguration.conf](#).

Name	Field Type	Card.	Description
<b>key</b>	<a href="#">CiString50Type</a>	1..1	Required.
<b>readonly</b>	Boolean	1..1	Required. False if the value can be set with the ChangeConfiguration message.
<b>value</b>	<a href="#">CiString500Type</a>	0..1	Optional. If key is known but not set, this field may be absent.

## 7.30. Location

### *Enumeration*

Allowable values of the optional "location" field of a value element in [SampledValue](#).

Value	Description
<b>Body</b>	Measurement inside body of Charge Point (e.g. Temperature)
<b>Cable</b>	Measurement taken from cable between EV and Charge Point
<b>EV</b>	Measurement taken by EV
<b>Inlet</b>	Measurement at network ("grid") inlet connection
<b>Outlet</b>	Measurement at a Connector. Default value

## 7.31. Measurand

### *Enumeration*

Allowable values of the optional "measurand" field of a Value element, as used in [MeterValues.req](#) and [StopTransaction.req](#) messages. Default value of "measurand" is always "Energy.Active.Import.Register"

Value	Description
<b>Current.Export</b>	Instantaneous current flow from EV
<b>Current.Import</b>	Instantaneous current flow to EV
<b>Current.Offered</b>	Maximum current offered to EV
<b>Energy.Active.Export.Register</b>	Energy exported by EV (Wh or kWh)
<b>Energy.Active.Import.Register</b>	Energy imported by EV (Wh or kWh)

Value	Description
<b>Energy.Reactive.Export.Register</b>	Reactive energy exported by EV (varh or kvarh)
<b>Energy.Reactive.Import.Register</b>	Reactive energy imported by EV (varh or kvarh)
<b>Energy.Active.Export.Interval</b>	Energy exported by EV (Wh or kWh)
<b>Energy.Active.Import.Interval</b>	Energy imported by EV (Wh or kWh)
<b>Energy.Reactive.Export.Interval</b>	Reactive energy exported by EV. (varh or kvarh)
<b>Energy.Reactive.Import.Interval</b>	Reactive energy imported by EV. (varh or kvarh)
<b>Frequency</b>	Instantaneous reading of powerline frequency
<b>Power.Active.Export</b>	Instantaneous active power exported by EV. (W or kW)
<b>Power.Active.Import</b>	Instantaneous active power imported by EV. (W or kW)
<b>Power.Factor</b>	Instantaneous power factor of total energy flow
<b>Power.Offered</b>	Maximum power offered to EV
<b>Power.Reactive.Export</b>	Instantaneous reactive power exported by EV. (var or kvar)
<b>Power.Reactive.Import</b>	Instantaneous reactive power imported by EV. (var or kvar)
<b>RPM</b>	Fan speed in RPM
<b>SoC</b>	State of charge of charging vehicle in percentage
<b>Temperature</b>	Temperature reading inside Charge Point.
<b>Voltage</b>	Instantaneous AC RMS supply voltage

## 7.32. MessageTrigger

### *Enumeration*

Type of request to be triggered in a [TriggerMessage.req](#).

Value	Description
<b>BootNotification</b>	To trigger a <a href="#">BootNotification</a> request
<b>DiagnosticsStatusNotification</b>	To trigger a <a href="#">DiagnosticsStatusNotification</a> request
<b>FirmwareStatusNotification</b>	To trigger a <a href="#">FirmwareStatusNotification</a> request
<b>Heartbeat</b>	To trigger a <a href="#">Heartbeat</a> request

Value	Description
<b>MeterValues</b>	To trigger a <a href="#">MeterValues</a> request
<b>StatusNotification</b>	To trigger a <a href="#">StatusNotification</a> request

## 7.33. MeterValue

### *Class*

Collection of one or more sampled values in [MeterValues.req](#). All sampled values in a MeterValue are sampled at the same point in time.

Field Name	Field Type	Card.	Description
<b>timestamp</b>	dateTime	1..1	Required. Timestamp for measured value(s).
<b>sampledValue</b>	<a href="#">SampledValue</a>	1..*	Required. One or more measured values

## 7.34. Phase

### *Enumeration*

Phase as used in [SampledValue](#). Phase specifies how a measured value is to be interpreted. Please note that not all values of Phase are applicable to all [Measurands](#).

Value	Description
<b>L1</b>	Measured on L1
<b>L2</b>	Measured on L2
<b>L3</b>	Measured on L3
<b>N</b>	Measured on Neutral
<b>L1-N</b>	Measured on L1 with respect to Neutral conductor
<b>L2-N</b>	Measured on L2 with respect to Neutral conductor
<b>L3-N</b>	Measured on L3 with respect to Neutral conductor
<b>L1-L2</b>	Measured between L1 and L2
<b>L2-L3</b>	Measured between L2 and L3
<b>L3-L1</b>	Measured between L3 and L1

## 7.35. ReadingContext

*Enumeration*

Values of the context field of a value in [SampledValue](#).

Value	Description
<b>Interruption.Begin</b>	Value taken at start of interruption.
<b>Interruption.End</b>	Value taken when resuming after interruption.
<b>Other</b>	Value for any other situations.
<b>Sample.Clock</b>	Value taken at clock aligned interval.
<b>Sample.Periodic</b>	Value taken as periodic sample relative to start time of transaction.
<b>Transaction.Begin</b>	Value taken at end of transaction.
<b>Transaction.End</b>	Value taken at start of transaction.
<b>Trigger</b>	Value taken in response to a <a href="#">TriggerMessage.req</a>

## 7.36. Reason

*Enumeration*

Reason for stopping a transaction in [StopTransaction.req](#).

Value	Description
<b>EmergencyStop</b>	Emergency stop button was used.
<b>EVDIsconnected</b>	disconnecting of cable, vehicle moved away from inductive charge unit.
<b>HardReset</b>	A hard reset command was received.
<b>Local</b>	Stopped locally on request of the user at the Charge Point. This is a regular termination of a transaction. Examples: presenting an RFID tag, pressing a button to stop.
<b>Other</b>	Any other reason.
<b>PowerLoss</b>	Complete loss of power.
<b>Reboot</b>	A locally initiated reset/reboot occurred. (for instance watchdog kicked in)



Value	Description
<b>Remote</b>	Stopped remotely on request of the user. This is a regular termination of a transaction. Examples: termination using a smartphone app, exceeding a (non local) prepaid credit.
<b>SoftReset</b>	A soft reset command was received.
<b>UnlockCommand</b>	Central System sent an Unlock Connector command.
<b>DeAuthorized</b>	The transaction was stopped because of the authorization status in a <a href="#">StartTransaction.conf</a>

## 7.37. RecurrencyKindType

*Enumeration*

Value	Description
<b>Daily</b>	The schedule restarts at the beginning of the next day.
<b>Weekly</b>	The schedule restarts at the beginning of the next week (defined as Monday morning)

## 7.38. RegistrationStatus

*Enumeration*

Result of registration in response to [BootNotification.req](#).

Value	Description
<b>Accepted</b>	Charge point is accepted by Central System.
<b>Pending</b>	Central System is not yet ready to accept the Charge Point. Central System may send messages to retrieve information or prepare the Charge Point.
<b>Rejected</b>	Charge point is not accepted by Central System. This may happen when the Charge Point id is not known by Central System.

## 7.39. RemoteStartStopStatus

*Enumeration*

The result of a [RemoteStartTransaction.req](#) or [RemoteStopTransaction.req](#) request.

Value	Description
Accepted	Command will be executed.
Rejected	Command will not be executed.

## 7.40. ReservationStatus

*Enumeration*

Status in [ReserveNow.conf](#).

Value	Description
Accepted	Reservation has been made.
Faulted	Reservation has not been made, because connectors or specified connector are in a faulted state.
Occupied	Reservation has not been made. All connectors or the specified connector are occupied.
Rejected	Reservation has not been made. Charge Point is not configured to accept reservations.
Unavailable	Reservation has not been made, because connectors or specified connector are in an unavailable state.

## 7.41. ResetStatus

*Enumeration*

Result of [Reset.req](#).

Value	Description
Accepted	Command will be executed.
Rejected	Command will not be executed.

## 7.42. ResetType

*Enumeration*

Type of reset requested by [Reset.req](#).

Value	Description
Hard	Full reboot of Charge Point software.
Soft	Return to initial status, gracefully terminating any transactions in progress.

## 7.43. SampledValue

### Class

Single sampled value in [MeterValues](#). Each value can be accompanied by optional fields.

Field Name	Field Type	Card.	Description
value	String	1..1	Required. Value as a “Raw” (decimal) number or “SignedData”. Field Type is “string” to allow for digitally signed data readings. Decimal numeric values are also acceptable to allow fractional values for measurands such as Temperature and Current.
context	<a href="#">ReadingContext</a>	0..1	Optional. Type of detail value: start, end or sample. Default = “Sample.Periodic”
format	<a href="#">ValueFormat</a>	0..1	Optional. Raw or signed data. Default = “Raw”
measurand	<a href="#">Measurand</a>	0..1	Optional. Type of measurement. Default = “Energy.Active.Import.Register”

Field Name	Field Type	Card.	Description
<b>phase</b>	<a href="#">Phase</a>	0..1	Optional. indicates how the measured value is to be interpreted. For instance between L1 and neutral (L1-N) Please note that not all values of phase are applicable to all <a href="#">Measurands</a> . When phase is absent, the measured value is interpreted as an overall value.
<b>location</b>	<a href="#">Location</a>	0..1	Optional. Location of measurement. Default="Outlet"
<b>unit</b>	<a href="#">UnitOfMeasure</a>	0..1	Optional. Unit of the value. Default = "Wh" if the (default) measurand is an "Energy" type.

## 7.44. TriggerMessageStatus

*Enumeration*

Status in [TriggerMessage.conf](#).

Value	Description
<b>Accepted</b>	Requested notification will be sent.
<b>Rejected</b>	Requested notification will not be sent.
<b>NotImplemented</b>	Requested notification cannot be sent because it is either not implemented or unknown.

## 7.45. UnitOfMeasure

*Enumeration*

Allowable values of the optional "unit" field of a Value element, as used in [MeterValues.req](#) and [StopTransaction.req](#) messages. Default value of "unit" is always "Wh".

Value	Description
<b>Wh</b>	Watt-hours (energy). Default.
<b>kWh</b>	kiloWatt-hours (energy).
<b>varh</b>	Var-hours (reactive energy).
<b>kvarh</b>	kilovar-hours (reactive energy).
<b>W</b>	Watts (power).
<b>kW</b>	kilowatts (power).
<b>VA</b>	VoltAmpere (apparent power).
<b>kVA</b>	kiloVolt Ampere (apparent power).
<b>var</b>	Vars (reactive power).
<b>kvar</b>	kilovars (reactive power).
<b>A</b>	Amperes (current).
<b>V</b>	Voltage (r.m.s. AC).
<b>Celsius</b>	Degrees (temperature).
<b>Fahrenheit</b>	Degrees (temperature).
<b>K</b>	Degrees Kelvin (temperature).
<b>Percent</b>	Percentage.

## 7.46. UnlockStatus

*Enumeration*

Status in response to [UnlockConnector.req.](#)

Value	Description
<b>Unlocked</b>	Connector has successfully been unlocked.
<b>UnlockFailed</b>	Failed to unlock the connector.
<b>NotSupported</b>	Charge Point has no connector lock.

## 7.47. UpdateStatus

*Enumeration*

Type of update for a [SendLocalList.req.](#)

Value	Description
Accepted	Local Authorization List successfully updated.
Failed	Failed to update the Local Authorization List.
NotSupported	Update of Local Authorization List is not supported by Charge Point.
VersionMismatch	Version number in the request for a differential update is less or equal then version number of current list.

## 7.48. UpdateType

*Enumeration*

Type of update for a [SendLocalList.req](#).

Value	Description
Differential	Indicates that the current Local Authorization List must be updated with the values in this message.
Full	Indicates that the current Local Authorization List must be replaced by the values in this message.

## 7.49. ValueFormat

*Enumeration*

Format that specifies how the value element in [SampledValue](#) is to be interpreted.

Value	Description
Raw	Data is to be interpreted as integer/decimal numeric data.
SignedData	Data is represented as a signed binary data block, encoded as hex data.

# 8. Firmware and Diagnostics File Transfer

This section is normative.

The supported transfer protocols are controlled by the configuration key *SupportedFileTransferProtocols*. FTP, FTPS, HTTP, HTTPS (CSL)

## 8.1. Download Firmware

When a Charge Point is notified about new firmware, it needs to be able to download this firmware. The Central System supplies in the request an URL where the firmware can be downloaded. The URL also contains the protocol which must be used to download the firmware.

It is recommended that the firmware is downloaded via FTP or FTPS. FTP(S) is better optimized for large binary data than HTTP. Also FTP(S) has the ability to resume downloads. In case a download is interrupted, the Charge Point can resume downloading after the part it already has downloaded. The FTP URL is of format: *ftp://user:password@host:port/path* in which the parts *user:password@*, *:password* or *:port* may be excluded.

To ensure that the correct firmware is downloaded, it is RECOMMENDED that the firmware is also digitally signed.

## 8.2. Upload Diagnostics

When a Charge Point is requested to upload a diagnostics file, the Central System supplies in the request an URL where the Charge Point should upload the file. The URL also contains the protocol which must be used to upload the file.

It is recommended that the diagnostics file is downloaded via FTP or FTPS. FTP(S) is better optimized for large binary data than HTTP. Also FTP(S) has the ability to resume uploads. In case an upload is interrupted, the Charge Point can resume uploading after the part it already has uploaded. The FTP URL is of format: *ftp://user:password@host:port/path* in which the parts *user:password@*, *:password* or *:port* may be excluded.

# 9. Standard Configuration Key Names & Values

Below follows a list of all configuration keys with a role standardized in this specification. The list is separated by [Feature Profiles](#). A required configuration key mentioned under a particular profile only has to be supported by the Charge Point if it supports that profile.

For optional Configuration Keys with a boolean type, the following rules apply for the configuration key in the response to a [GetConfiguration.req](#) without a list of keys:

- If the key is present, the Charge Point provides the functionality that is configured by the key, and it can be enabled or disabled by setting the value for the key.
- If the key is not present, the Charge Point does not provide the functionality that can be configured by the key.

The "Accessibility" property shows if the value for a certain configuration key is read-only ("R") or read-write ("RW"). In case the key is read-only, the Central System can read the value for the key using [GetConfiguration](#), but not write it. In case the the accessibility is read-write, the Central System can also write the value for the key using [ChangeConfiguration](#).

## 9.1. Core Profile

### 9.1.1. AllowOfflineTxForUnknownId

<b>Required/optional</b>	optional
<b>Accessibility</b>	RW
<b>Type</b>	boolean
<b>Description</b>	If this key exists, the Charge Point supports <a href="#">Unknown Offline Authorization</a> . If this key reports a value of <i>true</i> , <a href="#">Unknown Offline Authorization</a> is enabled.

### 9.1.2. AuthorizationCacheEnabled

<b>Required/optional</b>	optional
<b>Accessibility</b>	RW
<b>Type</b>	boolean
<b>Description</b>	If this key exists, the Charge Point supports an <a href="#">Authorization Cache</a> . If this key reports a value of <i>true</i> , the <a href="#">Authorization Cache</a> is enabled.



### 9.1.3. AuthorizeRemoteTxRequests

<b>Required/optional</b>	required
<b>Accessibility</b>	R or RW. Choice is up to Charge Point implementation.
<b>Type</b>	boolean
<b>Description</b>	Whether a remote request to start a transaction in the form of a <a href="#">RemoteStartTransaction.req</a> message should be authorized beforehand like a local action to start a transaction.

### 9.1.4. BlinkRepeat

<b>Required/optional</b>	optional
<b>Accessibility</b>	RW
<b>Type</b>	int
<b>Unit</b>	times
<b>Description</b>	Number of times to blink Charge Point lighting when signalling

### 9.1.5. ClockAlignedDataInterval

<b>Required/optional</b>	required
<b>Accessibility</b>	RW
<b>Type</b>	int
<b>Unit</b>	seconds
<b>Description</b>	<p>Size (in seconds) of the clock-aligned data interval. This is the size (in seconds) of the set of evenly spaced aggregation intervals per day, starting at 00:00:00 (midnight). For example, a value of 900 (15 minutes) indicates that every day should be broken into 96 15-minute intervals.</p> <p>When clock aligned data is being transmitted, the interval in question is identified by the start time and (optional) duration interval value, represented according to the ISO8601 standard. All "per-period" data (e.g. energy readings) should be accumulated (for "flow" type measurands such as energy), or averaged (for other values) across the entire interval (or partial interval, at the beginning or end of a charging session), and transmitted (if so enabled) at the end of each interval, bearing the interval start time timestamp.</p> <p>A value of "0" (numeric zero), by convention, is to be interpreted to mean that no clock-aligned data should be transmitted.</p>

### 9.1.6. ConnectionTimeOut

<b>Required/optional</b>	required
<b>Accessibility</b>	RW
<b>Type</b>	int
<b>Unit</b>	seconds
<b>Description</b>	Interval (from successful authorization) until incipient charging session is automatically canceled due to failure of EV user to (correctly) insert the charging cable connector(s) into the appropriate connector(s).

### 9.1.7. GetConfigurationMaxKeys

<b>Required/optional</b>	required
<b>Accessibility</b>	R
<b>Type</b>	int
<b>Description</b>	Maximum number of requested configuration keys in a <a href="#">GetConfiguration.req</a> PDU.

### 9.1.8. HeartbeatInterval

<b>Required/optional</b>	required
<b>Accessibility</b>	RW
<b>Type</b>	int
<b>Unit</b>	seconds
<b>Description</b>	Interval of inactivity (no OCPP exchanges) with central system after which the Charge Point should send a <a href="#">Heartbeat.req</a> PDU

### 9.1.9. LightIntensity

<b>Required/optional</b>	optional
<b>Accessibility</b>	RW
<b>Type</b>	int
<b>Unit</b>	%
<b>Description</b>	Percentage of maximum intensity at which to illuminate Charge Point lighting

### 9.1.10. LocalAuthorizeOffline

<b>Required/optional</b>	required
<b>Accessibility</b>	RW
<b>Type</b>	boolean
<b>Description</b>	whether the Charge Point, when <i>offline</i> , will start a transaction for locally-authorized identifiers.

### 9.1.11. LocalPreAuthorize

<b>Required/optional</b>	required
<b>Accessibility</b>	RW
<b>Type</b>	boolean
<b>Description</b>	whether the Charge Point, when online, will start a transaction for locally-authorized identifiers without waiting for or requesting an <a href="#">Authorize.conf</a> from the Central System

### 9.1.12. MaxEnergyOnInvalidId

<b>Required/optional</b>	optional
<b>Accessibility</b>	RW
<b>Type</b>	integer
<b>Unit</b>	Wh
<b>Description</b>	Maximum energy in Wh delivered when an identifier is invalidated by the Central System after start of a transaction.

### 9.1.13. MeterValuesAlignedData

<b>Required/optional</b>	required
<b>Accessibility</b>	RW
<b>Type</b>	CSL
<b>Description</b>	Clock-aligned measurand(s) to be included in a <a href="#">MeterValues.req</a> PDU, every <a href="#">ClockAlignedDataInterval</a> seconds

### 9.1.14. MeterValuesAlignedDataMaxLength

<b>Required/optional</b>	optional
--------------------------	----------

<b>Accessibility</b>	R
<b>Description</b>	Maximum number of items in a <code>MeterValuesAlignedData</code> Configuration Key.

### 9.1.15. `MeterValuesSampledData`

<b>Required/optional</b>	required
<b>Accessibility</b>	RW
<b>Type</b>	CSL
<b>Description</b>	Sampled measurands to be included in a <code>MeterValues.req</code> PDU, every <code>MeterValueSampleInterval</code> seconds. Where applicable, the <code>Measurand</code> is combined with the optional <code>phase</code> ; for instance: Voltage.L1 Default: "Energy.Active.Import.Register"

### 9.1.16. `MeterValuesSampledDataMaxLength`

<b>Required/optional</b>	optional
<b>Accessibility</b>	R
<b>Description</b>	Maximum number of items in a <code>MeterValuesSampledData</code> Configuration Key.

### 9.1.17. `MeterValueSampleInterval`

<b>Required/optional</b>	required
<b>Accessibility</b>	RW
<b>Type</b>	int
<b>Unit</b>	seconds
<b>Description</b>	Interval between sampling of metering (or other) data, intended to be transmitted by "MeterValues" PDUs. For charging session data ( <code>ConnectorId&gt;0</code> ), samples are acquired and transmitted periodically at this interval from the start of the charging transaction. A value of "0" (numeric zero), by convention, is to be interpreted to mean that no sampled data should be transmitted.

### 9.1.18. `MinimumStatusDuration`

<b>Required/optional</b>	optional
<b>Accessibility</b>	RW
<b>Type</b>	int

<b>Unit</b>	seconds
<b>Description</b>	The minimum duration that a Charge Point or Connector status is stable before a <a href="#">StatusNotification.req</a> PDU is sent to the Central System.

### 9.1.19. NumberOfConnectors

<b>Required/optional</b>	required
<b>Accessibility</b>	R
<b>Type</b>	int
<b>Description</b>	The number of physical charging connectors of this Charge Point.

### 9.1.20. ResetRetries

<b>Required/optional</b>	required
<b>Accessibility</b>	RW
<b>Type</b>	int
<b>Unit</b>	times
<b>Description</b>	Number of times to retry an unsuccessful reset of the Charge Point.

### 9.1.21. ConnectorPhaseRotation

<b>Required/optional</b>	required
<b>Accessibility</b>	RW
<b>Type</b>	CSL

<b>Description</b>	<p>The phase rotation per connector in respect to the connector’s energy meter (or if absent, the grid connection). Possible values per connector are:</p> <p><b>NotApplicable</b> (for Single phase or DC Charge Points)</p> <p><b>Unknown</b> (not (yet) known)</p> <p><b>RST</b> (Standard Reference Phasing)</p> <p><b>RTS</b> (Reversed Reference Phasing)</p> <p><b>SRT</b> (Reversed 240 degree rotation)</p> <p><b>STR</b> (Standard 120 degree rotation)</p> <p><b>TRS</b> (Standard 240 degree rotation)</p> <p><b>TSR</b> (Reversed 120 degree rotation)</p> <p>R can be identified as phase 1 (L1), S as phase 2 (L2), T as phase 3 (L3). If known, the Charge Point MAY also report the phase rotation between the grid connection and the main energymeter by using index number Zero (0).</p> <p>Values are reported in CSL, formatted: 0.RST, 1.RST, 2.RTS</p>
--------------------	--

### 9.1.22. ConnectorPhaseRotationMaxLength

<b>Required/optional</b>	optional
<b>Accessibility</b>	R
<b>Description</b>	Maximum number of items in a <b>ConnectorPhaseRotation</b> Configuration Key.

### 9.1.23. StopTransactionOnEVSideDisconnect

<b>Required/optional</b>	required
<b>Accessibility</b>	RW
<b>Type</b>	boolean
<b>Description</b>	When set to <i>true</i> , the Charge Point SHALL administratively stop the transaction when the cable is unplugged from the EV.

### 9.1.24. StopTransactionOnInvalidId

<b>Required/optional</b>	required
<b>Accessibility</b>	RW
<b>Type</b>	boolean
<b>Description</b>	whether the Charge Point will stop an ongoing transaction when it receives a non- <i>Accepted</i> authorization status in a <a href="#">StartTransaction.conf</a> for this transaction

### 9.1.25. StopTxnAlignedData

<b>Required/optional</b>	required
<b>Accessibility</b>	RW
<b>Type</b>	CSL
<b>Description</b>	Clock-aligned periodic measurand(s) to be included in the TransactionData element of <a href="#">StopTransaction.req</a> <a href="#">MeterValues.req</a> PDU for every <a href="#">ClockAlignedDataInterval</a> of the charging session

### 9.1.26. StopTxnAlignedDataMaxLength

<b>Required/optional</b>	optional
<b>Accessibility</b>	R
<b>Description</b>	Maximum number of items in a <a href="#">StopTxnAlignedData</a> Configuration Key.

### 9.1.27. StopTxnSampledData

<b>Required/optional</b>	required
<b>Accessibility</b>	RW
<b>Type</b>	CSL
<b>Description</b>	Sampled measurands to be included in the TransactionData element of <a href="#">StopTransaction.req</a> PDU, every <a href="#">MeterValueSampleInterval</a> seconds from the start of the charging session

### 9.1.28. StopTxnSampledDataMaxLength

<b>Required/optional</b>	optional
<b>Accessibility</b>	R
<b>Description</b>	Maximum number of items in a <a href="#">StopTxnSampledData</a> Configuration Key.

### 9.1.29. SupportedFeatureProfiles

<b>Required/optional</b>	required
<b>Accessibility</b>	R
<b>Type</b>	CSL

<b>Description</b>	A list of supported <a href="#">Feature Profiles</a> . Possible profile identifiers: Core, FirmwareManagement, LocalAuthListManagement, Reservation, SmartCharging and RemoteTrigger.
--------------------	---

### 9.1.30. SupportedFeatureProfilesMaxLength

<b>Required/optional</b>	optional
<b>Accessibility</b>	R
<b>Description</b>	Maximum number of items in a <a href="#">SupportedFeatureProfiles</a> Configuration Key.

### 9.1.31. TransactionMessageAttempts

<b>Required/optional</b>	required
<b>Accessibility</b>	RW
<b>Type</b>	int
<b>Unit</b>	times
<b>Description</b>	How often the Charge Point should try to submit a transaction-related message when the Central System fails to process it.

### 9.1.32. TransactionMessageRetryInterval

<b>Required/optional</b>	required
<b>Accessibility</b>	RW
<b>Type</b>	int
<b>Unit</b>	seconds
<b>Description</b>	How long the Charge Point should wait before resubmitting a transaction-related message that the Central System failed to process.

### 9.1.33. UnlockConnectorOnEVSideDisconnect

<b>Required/optional</b>	required
<b>Accessibility</b>	RW
<b>Type</b>	boolean
<b>Description</b>	When set to <i>true</i> , the Charge Point SHALL unlock the cable on Charge Point side when the cable is unplugged at the EV.



### 9.1.34. WebSocketPingInterval

<b>Required/optional</b>	optional
<b>Accessibility</b>	RW
<b>Type</b>	int
<b>Unit</b>	seconds
<b>Description</b>	Only relevant for websocket implementations. 0 disables client side websocket Ping/Pong. In this case there is either no ping/pong or the server initiates the ping and client responds with Pong. Positive values are interpreted as number of seconds between pings. Negative values are not allowed. ChangeConfiguration is expected to return a REJECTED result.

## 9.2. Local Auth List Management Profile

### 9.2.1. LocalAuthListEnabled

<b>Required/optional</b>	required
<b>Accessibility</b>	RW
<b>Type</b>	boolean
<b>Description</b>	whether the <a href="#">Local Authorization List</a> is enabled

### 9.2.2. LocalAuthListMaxLength

<b>Required/optional</b>	required
<b>Accessibility</b>	R
<b>Type</b>	int
<b>Description</b>	Maximum number of identifications that can be stored in the <a href="#">Local Authorization List</a>

### 9.2.3. SendLocalListMaxLength

<b>Required/optional</b>	required
<b>Accessibility</b>	R
<b>Type</b>	int
<b>Description</b>	Maximum number of identifications that can be send in a single <a href="#">SendLocalList.req</a>

## 9.3. Reservation Profile

### 9.3.1. ReserveConnectorZeroSupported

<b>Required/optional</b>	optional
<b>Accessibility</b>	R
<b>Type</b>	boolean
<b>Description</b>	If this configuration key is present and set to <i>true</i> : Charge Point support <a href="#">reservations</a> on connector 0.

## 9.4. Smart Charging Profile

### 9.4.1. ChargeProfileMaxStackLevel

<b>Required/optional</b>	required
<b>Accessibility</b>	R
<b>Type</b>	int
<b>Description</b>	Max StackLevel of a ChargingProfile. The number defined also indicates the max allowed number of installed charging schedules per <a href="#">Charging Profile Purposes</a> .

### 9.4.2. ChargingScheduleAllowedChargingRateUnit

<b>Required/optional</b>	required
<b>Accessibility</b>	R
<b>Type</b>	CSL
<b>Description</b>	A list of supported quantities for use in a <a href="#">ChargingSchedule</a> . Allowed values: 'Current' and 'Power'

### 9.4.3. ChargingScheduleMaxPeriods

<b>Required/optional</b>	required
<b>Accessibility</b>	R
<b>Type</b>	int
<b>Description</b>	Maximum number of periods that may be defined per <a href="#">ChargingSchedule</a> .

#### 9.4.4. ConnectorSwitch3to1PhaseSupported

<b>Required/optional</b>	optional
<b>Accessibility</b>	R
<b>Type</b>	bool
<b>Description</b>	If defined and true, this Charge Point support switching from 3 to 1 phase during a charging session.

#### 9.4.5. MaxChargingProfilesInstalled

<b>Required/optional</b>	required
<b>Accessibility</b>	R
<b>Type</b>	int
<b>Description</b>	Maximum number of Charging profiles installed at a time

# Appendix A: New in OCPP 1.6

The following changes are made in OCPP 1.6 compared to OCPP 1.5 [OCPP1.5]:

- Smart Charging is added
- A binding to JSON over WebSocket as a transport protocol is added, reducing data usage and enabling OCPP communication through NAT routers, see: [OCPP JSON Specification](#)
- Extra statuses are added to the [ChargePointStatus](#) enumeration, giving the CPO and ultimately end-users more information about the current status of a Charge Point
- Structure of MeterValues.req is changed to eliminate use of XML Attributes, this is needed for support of JSON (no attribute support in JSON).
- Extra values are added to the [Measurand](#) enumeration, giving Charge Point manufacturers the possibility to send new information to a Central System, such as the State of Charge of an EV
- The [TriggerMessage](#) message is added, giving the Central System the possibility to request information from the Charge Point
- A new *Pending* member is added to the [RegistrationStatus](#) enumeration used in [BootNotification.conf](#)
- More and clearer configuration keys are added, making it clearer to the CPO how to configure the different business cases in a Charge Point
- The messages and configuration keys are split into profiles, making it easier to implement OCPP gradually or only in part
- Known ambiguities are removed (e.g. when to use [UnlockConnector.req](#), how to respond to [RemoteStart/Stop](#), Connector numbering)

## A.1. Updated/New Messages:

- [BootNotification.req](#)
  - Change IccId and Imsi to CiString[] to enforce maximum lengths.
- [BootNotification.conf](#)
  - heartbeatInterval to interval, interval now also used for other purposes than heartbeat, need to fix in spec
  - Added status Pending
- [ChargePointErrorCode](#)
  - Added enum values: [InternalError](#), [LocalListConflict](#) and [UnderVoltage](#)
  - Renamed enum value [Mode3Error](#) to [EVCommunicationError](#)
- [ChargePointStatus](#)
  - Replaced enum value [Occupied](#) with the more detailed values: [Preparing](#), [Charging](#),

## SuspendedEVSE, SuspendedEV and Finishing

- [ChargingRateUnitType](#)
  - New
- [ConfigurationStatus](#)
  - Added enum [RebootRequired](#)
- [ClearChargingProfile.req](#)
  - New
- [ClearChargingProfile.conf](#)
  - New
- [DiagnosticsStatus](#)
  - Added enum [Uploading](#) and [Idle](#)
- [FirmwareStatus](#)
  - Added enum [Downloading](#), [Installing](#) and [Idle](#)
- [GetCompositeSchedule.req](#)
  - New
- [GetCompositeSchedule.conf](#)
  - New
- [Location](#)
  - Added enum [Cable](#) and [EV](#)
- [Measurand](#)
  - Added enum [Current.Offered](#), [Frequency](#), [Power.Offered](#), [RPM](#) and [SoC](#)
- [MeterValues.req](#)
  - overhaul of complex data structures
  - Added 'phase' field
- [ReadingContext](#)
  - Added enum [Trigger](#) and [Other](#)
- [RemoteStartTransaction.req](#)
  - Added [ChargingProfile](#) optional
- [SendLocalList.req](#)
  - removed hash
- [SendLocalList.conf](#)
  - removed hash

- [SetChargingProfile.req](#)
  - New
- [SetChargingProfile.conf](#)
  - New
- [StatusNotification.req](#)
  - Overhaul of states
  - New error codes
  - Connector id 0 can only have status: Available, Unavailable and Faulted.
- [StopTransaction.req](#)
  - added explicit and required stop reason
- [TriggerMessage.req](#)
  - New
- [TriggerMessage.conf](#)
  - New
- [UnlockConnector.conf](#)
  - overhaul of [UnlockStatus](#) enum
- [UnitOfMeasure](#)
  - Added Fahrenheit, K, Percent, VA, kVA
  - Rename Volt to V, Amp to A